

Datasheet for ABIN2783005
anti-CREBZF antibody (Middle Region)[Go to Product page](#)

2 Images

Overview

Quantity:	100 µL
Target:	CREBZF
Binding Specificity:	Middle Region
Reactivity:	Human, Mouse, Rat, Cow, Rabbit, Dog, Guinea Pig, Horse
Host:	Rabbit
Clonality:	Polyclonal
Conjugate:	This CREBZF antibody is un-conjugated
Application:	Western Blotting (WB), Immunohistochemistry (IHC)

Product Details

Immunogen:	The immunogen is a synthetic peptide directed towards the middle region of human CREBZF
Sequence:	AAAARLNRLK KKEYVMGLES RVRGLAAENQ ELRAENRELG KRVQALQEES
Predicted Reactivity:	Cow: 100%, Dog: 100%, Guinea Pig: 100%, Horse: 75%, Human: 100%, Mouse: 100%, Rabbit: 86%, Rat: 100%
Characteristics:	This is a rabbit polyclonal antibody against CREBZF. It was validated on Western Blot using a cell lysate as a positive control.
Purification:	Affinity Purified

Target Details

Target:	CREBZF
---------	--------

Target Details

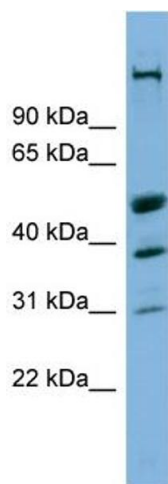
Alternative Name:	CREBZF (CREBZF Products)
Background:	<p>CREBZF strongly activates transcription when bound to HCFC1. CREBZF suppresses the expression of HSV proteins in cells infected with the virus in a HCFC1-dependent manner. It also suppresses the HCFC1-dependent transcriptional activation by CREB3 and redu</p> <p>Alias Symbols: ZF, SMILE</p> <p>Protein Interaction Partner: TTC23, CTNNBL1, ACYP2, TP53, CREBZF, XBP1, NFE2L1, ATF6B, ATF4, HCFC1, ZNF512B, CREB3L3, PPARGC1A, ELAVL1, UBC,</p> <p>Protein Size: 354</p>
Molecular Weight:	37 kDa
Gene ID:	58487
NCBI Accession:	NM_001039618 , NP_001034707
UniProt:	Q9NS37

Application Details

Application Notes:	Optimal working dilutions should be determined experimentally by the investigator.
Comment:	Antigen size: 354 AA
Restrictions:	For Research Use only

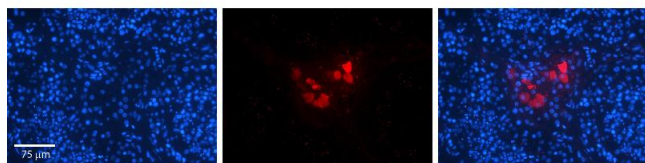
Handling

Format:	Liquid
Concentration:	Lot specific
Buffer:	Liquid. Purified antibody supplied in 1x PBS buffer with 0.09 % (w/v) sodium azide and 2 % sucrose.
Preservative:	Sodium azide
Precaution of Use:	This product contains Sodium azide: a POISONOUS AND HAZARDOUS SUBSTANCE which should be handled by trained staff only.
Handling Advice:	Avoid repeated freeze-thaw cycles.
Storage:	-20 °C
Storage Comment:	For short term use, store at 2-8°C up to 1 week. For long term storage, store at -20°C in small aliquots to prevent freeze-thaw cycles.



Western Blotting

Image 1. WB Suggested Anti-CREBZF Antibody Titration:
0.2-1 ug/ml Positive Control: Human Stomach



Immunohistochemistry

Image 2. Rabbit Anti-CREBZF Antibody Formalin Fixed Paraffin Embedded Tissue: Human Testis Tissue Observed Staining: Cytoplasm in Leydig cells Primary Antibody Concentration: N/A Other Working Concentrations: 1:600 Secondary Antibody: Donkey anti-Rabbit-Cy3 Secondary Antibody Concentration: 1:200 Magnification: 20X Exposure Time: 0.5 - 2.0 sec