

Datasheet for ABIN2783035
anti-SMC3 antibody (C-Term)[Go to Product page](#)

2 Images

Overview

| | |
|----------------------|---|
| Quantity: | 100 µL |
| Target: | SMC3 |
| Binding Specificity: | C-Term |
| Reactivity: | Human, Mouse, Rat, Cow, Dog, Horse, Rabbit, Zebrafish (Danio rerio), Guinea Pig |
| Host: | Rabbit |
| Clonality: | Polyclonal |
| Conjugate: | This SMC3 antibody is un-conjugated |
| Application: | Western Blotting (WB), Immunohistochemistry (IHC) |

Product Details

| | |
|-----------------------|--|
| Immunogen: | The immunogen is a synthetic peptide directed towards the C terminal region of human SMC3 |
| Sequence: | GKATLVMKKG DVEGSQSQDE GEGSGESERG SGSQSSVPSV DQFTGVGIRV |
| Predicted Reactivity: | Cow: 100%, Dog: 100%, Guinea Pig: 100%, Horse: 100%, Human: 100%, Mouse: 100%, Rabbit: 100%, Rat: 100%, Zebrafish: 86% |
| Characteristics: | This is a rabbit polyclonal antibody against SMC3. It was validated on Western Blot and immunohistochemistry. |
| Purification: | Affinity Purified |

Target Details

| | |
|---------|------|
| Target: | SMC3 |
|---------|------|

Target Details

| | |
|-------------------|--|
| Alternative Name: | SMC3 (SMC3 Products) |
| Background: | <p>SMC3 belongs to the SMC3 subfamily of SMC proteins. SMC3 occurs in certain cell types as either an intracellular, nuclear protein or a secreted protein. The nuclear form, known as structural maintenance of chromosomes 3, is a component of the multimeric cohesin complex that holds together sister chromatids during mitosis, enabling proper chromosome segregation.</p> <p>Alias Symbols: BAM, BMH, CDLS3, CSPG6, HCAP, SMC3L1</p> <p>Protein Interaction Partner: SUMO2, UBC, RPA3, RPA2, RPA1, SUZ12, EED, RNF2, FBXO6, ANKRD28, HDAC11, HDAC8, HDAC9, SOX2, RAD21, CDCA5, PDS5A, WAPAL, MMS19, METTL21B, NOTCH1, SMC1A, SFPQ, HNRNPM, NSMCE2, UBD, COPS5, COPS6, CUL2, CUL3, NEDD8, CDK2, FBXO25, MECP2, NIPBL, CDK8, SUPT5H, P</p> <p>Protein Size: 681</p> |
| Molecular Weight: | 74 kDa |
| Gene ID: | 9126 |
| NCBI Accession: | NM_005445 |
| UniProt: | Q9UQE7 |
| Pathways: | Stem Cell Maintenance |

Application Details

| | |
|--------------------|--|
| Application Notes: | Optimal working dilutions should be determined experimentally by the investigator. |
| Comment: | Antigen size: 681 AA |
| Restrictions: | For Research Use only |

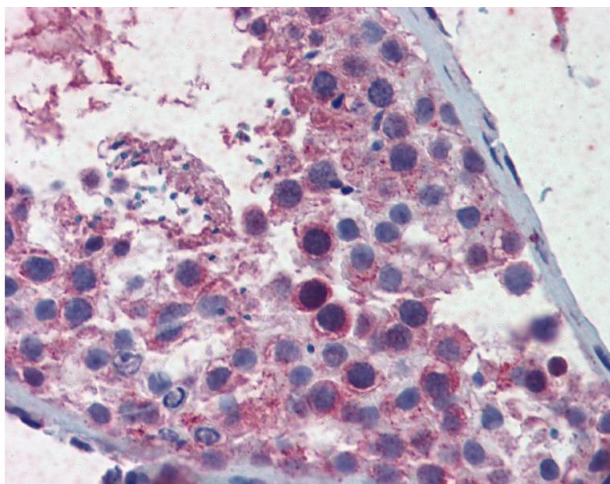
Handling

| | |
|--------------------|--|
| Format: | Liquid |
| Concentration: | Lot specific |
| Buffer: | Liquid. Purified antibody supplied in 1x PBS buffer with 0.09 % (w/v) sodium azide and 2 % sucrose. |
| Preservative: | Sodium azide |
| Precaution of Use: | This product contains Sodium azide: a POISONOUS AND HAZARDOUS SUBSTANCE which should be handled by trained staff only. |

Handling

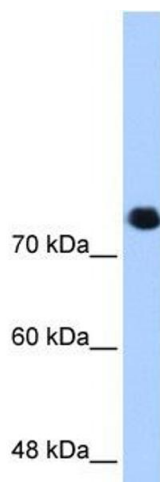
| | |
|------------------|---|
| Handling Advice: | Avoid repeated freeze-thaw cycles. |
| Storage: | -20 °C |
| Storage Comment: | For short term use, store at 2-8°C up to 1 week. For long term storage, store at -20°C in small aliquots to prevent freeze-thaw cycles. |

Images



Immunohistochemistry

Image 1.



Western Blotting

Image 2. WB Suggested Anti-SMC3 Antibody Titration: 0.2-1 ug/ml Positive Control: HepG2 cell lysate There is BioGPS gene expression data showing that SMC3 is expressed in HepG2