

Datasheet for ABIN2783036  
**anti-SMC3 antibody (N-Term)**[Go to Product page](#)

## 2 Images

## Overview

Quantity:	100 µL
Target:	SMC3
Binding Specificity:	N-Term
Reactivity:	Human, Mouse, Rat, Cow, Dog, Horse, Rabbit, Zebrafish (Danio rerio), Guinea Pig
Host:	Rabbit
Clonality:	Polyclonal
Conjugate:	This SMC3 antibody is un-conjugated
Application:	Western Blotting (WB)

## Product Details

Immunogen:	The immunogen is a synthetic peptide directed towards the N terminal region of human SMC3
Sequence:	KWDKMRRAL EYTIYNQELNE TRAKLDELSA KRETSGEKSRLQRDAQQDAR
Predicted Reactivity:	Cow: 100%, Dog: 100%, Guinea Pig: 100%, Horse: 100%, Human: 100%, Mouse: 100%, Rabbit: 100%, Rat: 100%, Zebrafish: 86%
Characteristics:	This is a rabbit polyclonal antibody against SMC3. It was validated on Western Blot using a cell lysate as a positive control.
Purification:	Affinity Purified

## Target Details

Target:	SMC3
---------	------

## Target Details

Alternative Name:	SMC3 ( <a href="#">SMC3 Products</a> )
Background:	<p>SMC3 belongs to the SMC3 subfamily of SMC proteins. SMC3 occurs in certain cell types as either an intracellular, nuclear protein or a secreted protein. The nuclear form, known as structural maintenance of chromosomes 3, is a component of the multimeric cohesin complex that holds together sister chromatids during mitosis, enabling proper chromosome segregation.</p> <p>Alias Symbols: BAM, BMH, CDLS3, CSPG6, HCAP, SMC3L1</p> <p>Protein Interaction Partner: SUMO2, UBC, RPA3, RPA2, RPA1, SUZ12, EED, RNF2, FBXO6, ANKRD28, HDAC11, HDAC8, HDAC9, SOX2, RAD21, CDCA5, PDS5A, WAPAL, MMS19, METTL21B, NOTCH1, SMC1A, SFPQ, HNRNPM, NSMCE2, UBD, COPS5, COPS6, CUL2, CUL3, NEDD8, CDK2, FBXO25, MECP2, NIPBL, CDK8, SUPT5H, P</p> <p>Protein Size: 1217</p>
Molecular Weight:	141 kDa
Gene ID:	9126
NCBI Accession:	<a href="#">NM_005445</a> , <a href="#">NP_005436</a>
UniProt:	<a href="#">Q9UQE7</a>
Pathways:	<a href="#">Stem Cell Maintenance</a>

## Application Details

Application Notes:	Optimal working dilutions should be determined experimentally by the investigator.
Comment:	Antigen size: 1217 AA
Restrictions:	For Research Use only

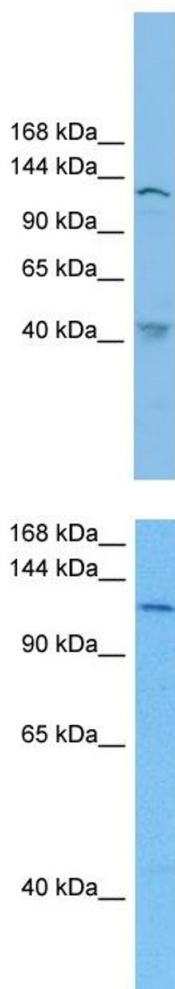
## Handling

Format:	Liquid
Concentration:	Lot specific
Buffer:	Liquid. Purified antibody supplied in 1x PBS buffer with 0.09 % (w/v) sodium azide and 2 % sucrose.
Preservative:	Sodium azide
Precaution of Use:	This product contains Sodium azide: a POISONOUS AND HAZARDOUS SUBSTANCE which should be handled by trained staff only.

## Handling

Handling Advice:	Avoid repeated freeze-thaw cycles.
Storage:	-20 °C
Storage Comment:	For short term use, store at 2-8°C up to 1 week. For long term storage, store at -20°C in small aliquots to prevent freeze-thaw cycles.

## Images



### Western Blotting

**Image 1.** WB Suggested Anti-SMC3 Antibody Titration: 0.2-1 ug/ml ELISA Titer: 1:62500 Positive Control: COLO205 cell lysate There is BioGPS gene expression data showing that SMC3 is expressed in COLO205

### Western Blotting

**Image 2.** Host: Mouse Target Name: SMC3 Sample Tissue: Mouse Liver Antibody Dilution: 1ug/ml