

Datasheet for ABIN2783041  
**anti-PA2G4 antibody (C-Term)**[Go to Product page](#)

## 4 Images

## Overview

Quantity:	100 µL
Target:	PA2G4
Binding Specificity:	C-Term
Reactivity:	Human, Mouse, Rat, Dog, Cow, Zebrafish (Danio rerio), Guinea Pig, Horse, Rabbit
Host:	Rabbit
Clonality:	Polyclonal
Conjugate:	This PA2G4 antibody is un-conjugated
Application:	Western Blotting (WB), Immunohistochemistry (IHC)

## Product Details

Immunogen:	The immunogen is a synthetic peptide directed towards the C terminal region of human PA2G4
Sequence:	LLQPFNVLYE KEGEFVAQFK FTVLLMPNGP MRITSGPFEP DLYKSEMEVQ
Predicted Reactivity:	Cow: 100%, Dog: 100%, Guinea Pig: 100%, Horse: 100%, Human: 100%, Mouse: 100%, Rabbit: 100%, Rat: 100%, Zebrafish: 86%
Characteristics:	This is a rabbit polyclonal antibody against PA2G4. It was validated on Western Blot using a cell lysate as a positive control.
Purification:	Affinity Purified

## Target Details

Target:	PA2G4
---------	-------

## Target Details

Alternative Name: PA2G4 ([PA2G4 Products](#))

Background: PA2G4 is an RNA-binding protein that is involved in growth regulation. This protein is present in pre-ribosomal ribonucleoprotein complexes and may be involved in ribosome assembly and the regulation of intermediate and late steps of rRNA processing. This protein can interact with the cytoplasmic domain of the ErbB3 receptor and may contribute to transducing growth regulatory signals. This protein is also a transcriptional co-repressor of androgen receptor-regulated genes and other cell cycle regulatory genes through its interactions with histone deacetylases. This protein has been implicated in growth inhibition and the induction of differentiation of human cancer cells. This gene encodes an RNA-binding protein that is involved in growth regulation. This protein is present in pre-ribosomal ribonucleoprotein complexes and may be involved in ribosome assembly and the regulation of intermediate and late steps of rRNA processing. This protein can interact with the cytoplasmic domain of the ErbB3 receptor and may contribute to transducing growth regulatory signals. This protein is also a transcriptional co-repressor of androgen receptor-regulated genes and other cell cycle regulatory genes through its interactions with histone deacetylases. This protein has been implicated in growth inhibition and the induction of differentiation of human cancer cells. Six pseudogenes, located on chromosomes 3, 6, 9, 18, 20 and X, have been identified. Publication Note: This RefSeq record includes a subset of the publications that are available for this gene. Please see the Entrez Gene record to access additional publications.

Alias Symbols: EBP1, HG4-1, p38-2G4

Protein Interaction Partner: DHX9, PKN1, NPM1, NCL, LAMB1, HSPA1B, HNRNPA2B1, ACTB, ERBB3, DDX21, VIM, UBC, RNF20, SUMO2, SUMO3, MDM2, STUB1, HSPA4, YBX1, NMT1, MAP2, KRT17, FAU, RPL23A, RPS27L, EIF3K, DIMT1, NELFB, IGF2BP3, G3BP1, EXOSC5, HMGA2, HMGA1, EEF2K, UBL4A, ITGA4, FN1, IGF2

Protein Size: 394

Molecular Weight: 44 kDa

Gene ID: 5036

NCBI Accession: [NM\\_006191](#), [NP\\_006182](#)

UniProt: [Q9UQ80](#)

Pathways: [Myometrial Relaxation and Contraction](#), [Regulation of Carbohydrate Metabolic Process](#), [Hepatitis C](#), [Toll-Like Receptors Cascades](#)

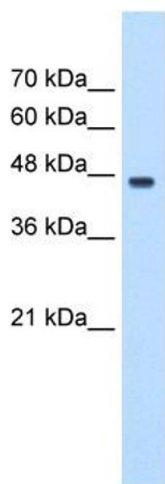
## Application Details

Application Notes:	Optimal working dilutions should be determined experimentally by the investigator.
Comment:	Antigen size: 394 AA
Restrictions:	For Research Use only

## Handling

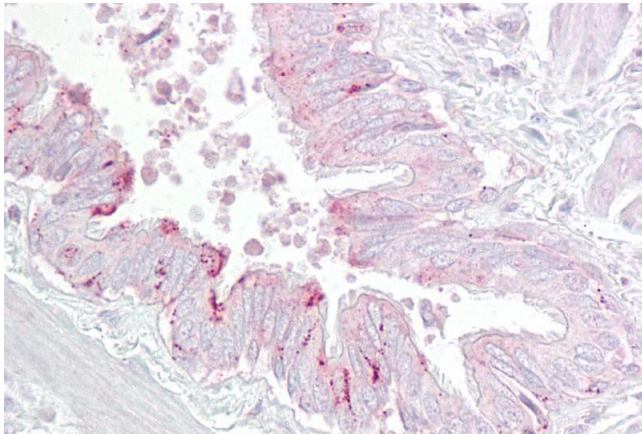
Format:	Liquid
Concentration:	Lot specific
Buffer:	Liquid. Purified antibody supplied in 1x PBS buffer with 0.09 % (w/v) sodium azide and 2 % sucrose.
Preservative:	Sodium azide
Precaution of Use:	This product contains Sodium azide: a POISONOUS AND HAZARDOUS SUBSTANCE which should be handled by trained staff only.
Handling Advice:	Avoid repeated freeze-thaw cycles.
Storage:	-20 °C
Storage Comment:	For short term use, store at 2-8°C up to 1 week. For long term storage, store at -20°C in small aliquots to prevent freeze-thaw cycles.

## Images



### Western Blotting

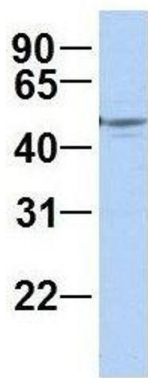
**Image 1.** WB Suggested Anti-PA2G4 Antibody Titration: 0.2-1 ug/ml Positive Control: HepG2 cell lysate PA2G4 is strongly supported by BioGPS gene expression data to be expressed in Human HepG2 cells



#### Immunohistochemistry

**Image 2.** Immunohistochemistry with Lung, respiratory epithelium tissue at an antibody concentration of 5µg/ml using anti-PA2G4 antibody (ARP47601\_P050)

#### PA2G4



#### Western Blotting

**Image 3.** Host: Rabbit Target Name: PA2G4 Sample Type: Human Fetal Brain Antibody Dilution: 1.0ug/ml

Please check the [product details page](#) for more images. Overall 4 images are available for ABIN2783041.