

Datasheet for ABIN2783063

**anti-MAML3 antibody (Middle Region)**[Go to Product page](#)**1** Image

## Overview

Quantity:	100 µL
Target:	MAML3
Binding Specificity:	Middle Region
Reactivity:	Human, Mouse, Rabbit, Horse, Cow, Rat, Dog, Guinea Pig
Host:	Rabbit
Clonality:	Polyclonal
Conjugate:	This MAML3 antibody is un-conjugated
Application:	Western Blotting (WB)

## Product Details

Immunogen:	The immunogen is a synthetic peptide directed towards the middle region of human MAML3
Sequence:	YPVQQVNQFQ GSPQDIAAVR SQAALQSMRT SRLMAQNAGM MGIGPSQNPG
Predicted Reactivity:	Cow: 93%, Dog: 100%, Guinea Pig: 100%, Horse: 100%, Human: 100%, Mouse: 100%, Rabbit: 100%, Rat: 100%
Characteristics:	This is a rabbit polyclonal antibody against MAML3. It was validated on Western Blot using a cell lysate as a positive control.
Purification:	Affinity Purified

## Target Details

Target:	MAML3
---------	-------

## Target Details

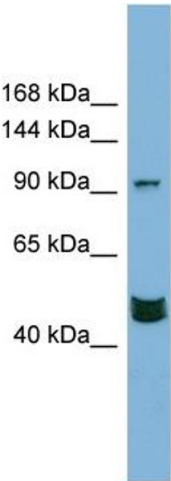
Alternative Name:	MAML3 ( <a href="#">MAML3 Products</a> )
Background:	<p>MAML3 acts as a transcriptional coactivator for NOTCH proteins. MAML3 has been shown to amplify NOTCH-induced transcription of HES1.</p> <p>Alias Symbols: CAGH3, ERDA3, GDN, MAM-2, MAM2, TNRC3</p> <p>Protein Interaction Partner: NOTCH1, ZZZ3, SCMH1, ZBTB1, RAI1, SUPT5H, NFX1, NOTCH3, NOTCH2, NOTCH4, MAML1, CSHL1,</p> <p>Protein Size: 1133</p>
Molecular Weight:	122 kDa
Gene ID:	55534
NCBI Accession:	<a href="#">NM_018717</a> , <a href="#">NP_061187</a>
UniProt:	<a href="#">Q96JK9</a>

## Application Details

Application Notes:	Optimal working dilutions should be determined experimentally by the investigator.
Comment:	Antigen size: 1133 AA
Restrictions:	For Research Use only

## Handling

Format:	Liquid
Concentration:	Lot specific
Buffer:	Liquid. Purified antibody supplied in 1x PBS buffer with 0.09 % (w/v) sodium azide and 2 % sucrose.
Preservative:	Sodium azide
Precaution of Use:	This product contains Sodium azide: a POISONOUS AND HAZARDOUS SUBSTANCE which should be handled by trained staff only.
Handling Advice:	Avoid repeated freeze-thaw cycles.
Storage:	-20 °C
Storage Comment:	For short term use, store at 2-8°C up to 1 week. For long term storage, store at -20°C in small aliquots to prevent freeze-thaw cycles.



Western Blotting

**Image 1.** WB Suggested Anti-MAML3 Antibody Titration:  
0.2-1 ug/ml Positive Control: PANC1 cell lysate