

Datasheet for ABIN2783064
anti-MAML3 antibody (C-Term)



[Go to Product page](#)

1 Image

Overview

Quantity:	100 µL
Target:	MAML3
Binding Specificity:	C-Term
Reactivity:	Human, Mouse, Horse, Rabbit, Cow, Rat, Dog, Guinea Pig
Host:	Rabbit
Clonality:	Polyclonal
Conjugate:	This MAML3 antibody is un-conjugated
Application:	Western Blotting (WB)

Product Details

Immunogen:	The immunogen is a synthetic peptide directed towards the C-terminal region of human MAML3
Sequence:	VQGAQSWQQ RSLQGMPGRT SGELGPFNNG ASYPLQAGQP RLTKQHFPQG
Predicted Reactivity:	Cow: 100%, Dog: 93%, Guinea Pig: 100%, Horse: 100%, Human: 100%, Mouse: 100%, Rabbit: 86%, Rat: 100%
Characteristics:	This is a rabbit polyclonal antibody against MAML3. It was validated on Western Blot.
Purification:	Affinity Purified

Target Details

Target:	MAML3
---------	-------

Target Details

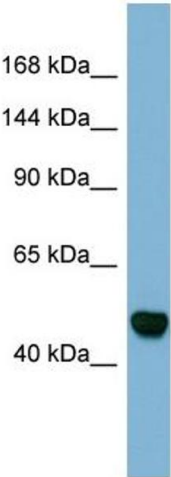
Alternative Name:	MAML3 (MAML3 Products)
Background:	Alias Symbols: GDN, MAM2, CAGH3, ERDA3, MAM-2, TNRC3 Protein Size: 445
Molecular Weight:	48 kDa
Gene ID:	55534
NCBI Accession:	NM_018717 , NP_061187
UniProt:	Q96JK9

Application Details

Restrictions:	For Research Use only
---------------	-----------------------

Handling

Format:	Liquid
Concentration:	1 mg/mL
Buffer:	Liquid. Purified antibody supplied in 1x PBS buffer with 0.09 % (w/v) sodium azide and 2 % sucrose.
Preservative:	Sodium azide
Precaution of Use:	This product contains Sodium azide: a POISONOUS AND HAZARDOUS SUBSTANCE which should be handled by trained staff only.
Handling Advice:	Avoid repeat freeze-thaw cycles.
Storage:	-20 °C
Storage Comment:	For short term use, store at 2-8°C up to 1 week. For long term storage, store at -20°C in small aliquots to prevent freeze-thaw cycles.



Western Blotting

Image 1. Host: Rabbit Target Name: MAML3 Sample Type: Fetal Stomach lysates Antibody Dilution: 1.0ug/ml