

Datasheet for ABIN2783075  
**anti-XPO5 antibody (Middle Region)**[Go to Product page](#)[1 Image](#)[1 Publication](#)

## Overview

Quantity:	100 µL
Target:	XPO5
Binding Specificity:	Middle Region
Reactivity:	Human, Mouse, Rat, Guinea Pig, Horse, Cow, Dog, Rabbit
Host:	Rabbit
Clonality:	Polyclonal
Conjugate:	This XPO5 antibody is un-conjugated
Application:	Western Blotting (WB)

## Product Details

Immunogen:	The immunogen is a synthetic peptide directed towards the middle region of human XPO5
Sequence:	MEQIPEIQKD SLDQFDCKLL NPSLQKVADK RRKDQFKRLI AGCIGKPLGE
Predicted Reactivity:	Cow: 93%, Dog: 93%, Guinea Pig: 100%, Horse: 100%, Human: 100%, Mouse: 86%, Rabbit: 100%, Rat: 86%
Characteristics:	This is a rabbit polyclonal antibody against XPO5. It was validated on Western Blot using a cell lysate as a positive control.
Purification:	Affinity Purified

## Target Details

Target:	XPO5
---------	------

## Target Details

Alternative Name:	XPO5 ( <a href="#">XPO5 Products</a> )
Background:	<p>Exportin-5 belongs to a large family of karyopherins that mediate the transport of proteins and other cargo between the nuclear and cytoplasmic compartments. Exportin-5 belongs to a large family of karyopherins (see MIM 602738) that mediate the transport of proteins and other cargo between the nuclear and cytoplasmic compartments.[supplied by OMIM]. Publication Note: This RefSeq record includes a subset of the publications that are available for this gene. Please see the Entrez Gene record to access additional publications.</p> <p>Alias Symbols: FLJ14239, FLJ32057, FLJ45606, KIAA1291, exp5</p> <p>Protein Interaction Partner: UBC, CHORDC1, ITGB1BP2, MAT2B, SNX5, ARIH1, WDR4, PDIA6, EFTUD2, UGDH, TTC1, SHMT1, SARS, PPP3CA, SERPINE2, PFDN5, NRD1, PPP1R12A, HARS, GTF2E1, BAG1, NSUN2, AARSD1, P3H1, ELAC2, DUS3L, EGFR, SOX2, CLN3, RAN, MMS19, vpu, VCAM1, SMAD4, ITGA4, FN1, Dlg4, CA</p> <p>Protein Size: 1204</p>
Molecular Weight:	136 kDa
Gene ID:	57510
NCBI Accession:	<a href="#">NM_020750</a> , <a href="#">NP_065801</a>
UniProt:	<a href="#">Q9HAV4</a>
Pathways:	<a href="#">Regulatory RNA Pathways</a> , <a href="#">Protein targeting to Nucleus</a>

## Application Details

Application Notes:	Optimal working dilutions should be determined experimentally by the investigator.
Comment:	Antigen size: 1204 AA
Restrictions:	For Research Use only

## Handling

Format:	Liquid
Concentration:	Lot specific
Buffer:	Liquid. Purified antibody supplied in 1x PBS buffer with 0.09 % (w/v) sodium azide and 2 % sucrose.
Preservative:	Sodium azide
Precaution of Use:	This product contains Sodium azide: a POISONOUS AND HAZARDOUS SUBSTANCE which

## Handling

should be handled by trained staff only.

Handling Advice: Avoid repeated freeze-thaw cycles.

Storage: -20 °C

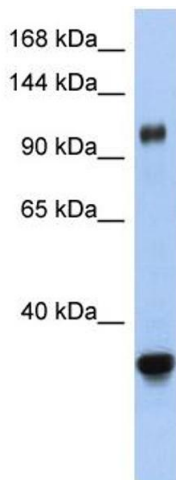
Storage Comment: For short term use, store at 2-8°C up to 1 week. For long term storage, store at -20°C in small aliquots to prevent freeze-thaw cycles.

## Publications

Product cited in: Sharma, Burdon, Chidlow, Klebe, Crawford, Dimasi, Dave, Martin, Javadiyan, Wood, Casson, Danoy, Griggs, Hewitt, Landers, Mitchell, Mackey, Craig: "Association of genetic variants in the TMC01 gene with clinical parameters related to glaucoma and characterization of the protein in the eye." in: **Investigative ophthalmology & visual science**, Vol. 53, Issue 8, pp. 4917-25, (2012) ([PubMed](#)).

Burdon, Macgregor, Hewitt, Sharma, Chidlow, Mills, Danoy, Casson, Viswanathan, Liu, Landers, Henders, Wood, Souzeau, Crawford, Leo, Wang, Rochtchina, Nyholt, Martin, Montgomery, Mitchell, Brown et al.: "Genome-wide association study identifies susceptibility loci for open angle glaucoma at TMC01 and CDKN2B-AS1. ..." in: **Nature genetics**, Vol. 43, Issue 6, pp. 574-8, (2011) ([PubMed](#)).

## Images



### Western Blotting

**Image 1.** WB Suggested Anti-XPO5 Antibody Titration: 0.2-1 ug/ml ELISA Titer: 1:62500 Positive Control: Human Small Intestine