

Datasheet for ABIN2783082

**anti-METTL16 antibody (N-Term)**[Go to Product page](#)**1** Image

## Overview

Quantity:	100 µL
Target:	METTL16
Binding Specificity:	N-Term
Reactivity:	Human, Mouse, Rat, Dog, Cow, Guinea Pig, Horse, Rabbit, Zebrafish (Danio rerio)
Host:	Rabbit
Clonality:	Polyclonal
Conjugate:	This METTL16 antibody is un-conjugated
Application:	Western Blotting (WB)

## Product Details

Immunogen:	The immunogen is a synthetic peptide directed towards the N terminal region of human METT10D
Sequence:	LNGRVSLNFK DPEAVRALTC TLLREDFGLS IDIPLERLIP TVPLRLNYIH
Predicted Reactivity:	Cow: 100%, Dog: 100%, Guinea Pig: 100%, Horse: 100%, Human: 100%, Mouse: 100%, Rabbit: 100%, Rat: 100%, Zebrafish: 92%
Characteristics:	This is a rabbit polyclonal antibody against METT10D. It was validated on Western Blot using a cell lysate as a positive control.
Purification:	Affinity Purified

## Target Details

Target:	METTL16
---------	---------

## Target Details

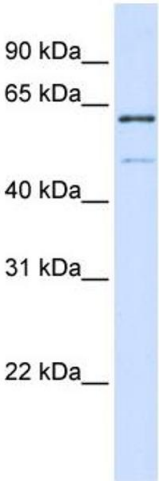
Alternative Name:	METT10D ( <a href="#">METTL16 Products</a> )
Background:	<p>METT10D belongs to the methyltransferase superfamily, METT10D/rImF family. The exact function of METT10D remains unknown.</p> <p>Alias Symbols: MGC3329, METT10D</p> <p>Protein Interaction Partner: UBC, FAM50A, YARS, APP, MEPCE,</p> <p>Protein Size: 562</p>
Molecular Weight:	63 kDa
Gene ID:	79066
NCBI Accession:	<a href="#">NM_024086</a> , <a href="#">NP_076991</a>
UniProt:	<a href="#">Q86W50</a>

## Application Details

Application Notes:	Optimal working dilutions should be determined experimentally by the investigator.
Comment:	Antigen size: 562 AA
Restrictions:	For Research Use only

## Handling

Format:	Liquid
Concentration:	Lot specific
Buffer:	Liquid. Purified antibody supplied in 1x PBS buffer with 0.09 % (w/v) sodium azide and 2 % sucrose.
Preservative:	Sodium azide
Precaution of Use:	This product contains Sodium azide: a POISONOUS AND HAZARDOUS SUBSTANCE which should be handled by trained staff only.
Handling Advice:	Avoid repeated freeze-thaw cycles.
Storage:	-20 °C
Storage Comment:	For short term use, store at 2-8°C up to 1 week. For long term storage, store at -20°C in small aliquots to prevent freeze-thaw cycles.



**Western Blotting**

**Image 1.** WB Suggested Anti-METT10D Antibody Titration: 0.2-1 ug/ml ELISA Titer: 1:312500 Positive Control: 293T cell lysate METTL16 is supported by BioGPS gene expression data to be expressed in HEK293T