

Datasheet for ABIN2783093

**anti-PMFBP1 antibody (Middle Region)**[Go to Product page](#)

## 1 Image

## Overview

Quantity:	100 µL
Target:	PMFBP1
Binding Specificity:	Middle Region
Reactivity:	Human, Mouse, Rat, Pig, Rabbit, Cow, Dog, Horse
Host:	Rabbit
Clonality:	Polyclonal
Conjugate:	This PMFBP1 antibody is un-conjugated
Application:	Western Blotting (WB)

## Product Details

Immunogen:	The immunogen is a synthetic peptide directed towards the middle region of Human PMFBP1
Sequence:	LEAVSEQKRN IMKDMMKLEL DLHGLREETTS AHIERKDKDI TILQCRLQEL
Predicted Reactivity:	Cow: 100%, Dog: 100%, Horse: 100%, Human: 100%, Mouse: 100%, Pig: 100%, Rabbit: 100%, Rat: 100%
Characteristics:	This is a rabbit polyclonal antibody against PMFBP1. It was validated on Western Blot.
Purification:	Affinity Purified

## Target Details

Target:	PMFBP1
Alternative Name:	PMFBP1 ( <a href="#">PMFBP1 Products</a> )

## Target Details

Background:	PMFBP1 may play a role in sperm morphology especially the sperm tail and consequently affect fertility and may also be involved in the general organization of cellular cytoskeleton. Protein Size: 797
-------------	--

Molecular Weight:	87 kDa
-------------------	--------

Gene ID:	83449
----------	-------

## Application Details

Application Notes:	Optimal working dilution should be determined by the investigator.
--------------------	--

Restrictions:	For Research Use only
---------------	-----------------------

## Handling

Format:	Liquid
---------	--------

Concentration:	1 mg/mL
----------------	---------

Buffer:	Liquid. Purified antibody supplied in 1x PBS buffer with 0.09 % (w/v) sodium azide and 2 % sucrose.
---------	---

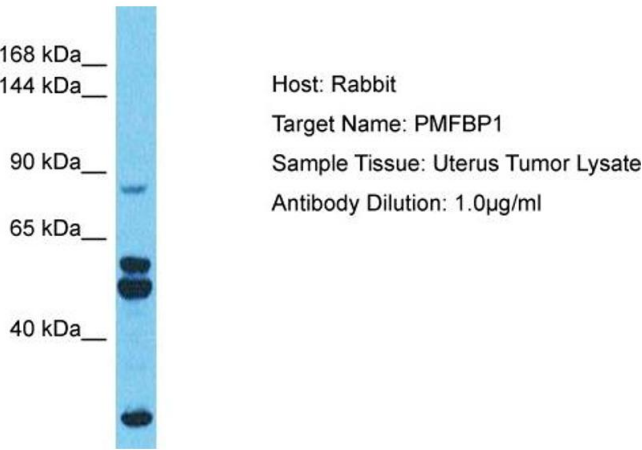
Preservative:	Sodium azide
---------------	--------------

Precaution of Use:	This product contains Sodium azide: a POISONOUS AND HAZARDOUS SUBSTANCE which should be handled by trained staff only.
--------------------	--

Handling Advice:	Avoid repeat freeze-thaw cycles.
------------------	----------------------------------

Storage:	-20 °C
----------	--------

Storage Comment:	For short term use, store at 2-8°C up to 1 week. For long term storage, store at -20°C in small aliquots to prevent freeze-thaw cycles.
------------------	---



Western Blotting

**Image 1.** Host: Rabbit Target Name: PMFBP1 Sample Type: Uterus Tumor lysates Antibody Dilution: 1.0ug/ml