

Datasheet for ABIN2783108  
**anti-TAM41 antibody (N-Term)**[Go to Product page](#)

## 3 Images

## Overview

Quantity:	100 µL
Target:	TAM41 (TAMM41)
Binding Specificity:	N-Term
Reactivity:	Human, Mouse, Cow, Horse, Rabbit, Guinea Pig, Pig, Rat, Dog
Host:	Rabbit
Clonality:	Polyclonal
Conjugate:	This TAM41 antibody is un-conjugated
Application:	Western Blotting (WB), Immunohistochemistry (IHC)

## Product Details

Immunogen:	The immunogen is a synthetic peptide directed towards the N terminal region of human C3orf31
Sequence:	QSSWVTFRKI LSHFPEELSL AFVYGSGVYR QAGPSSDQKN AMLDFVFTVD
Predicted Reactivity:	Cow: 100%, Dog: 86%, Guinea Pig: 93%, Horse: 92%, Human: 100%, Mouse: 77%, Pig: 100%, Rabbit: 86%, Rat: 93%
Characteristics:	This is a rabbit polyclonal antibody against C3orf31. It was validated on Western Blot and immunohistochemistry.
Purification:	Protein A purified

## Target Details

Target:	TAM41 (TAMM41)
---------	----------------

## Target Details

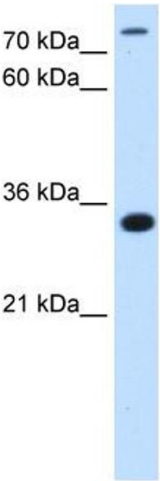
Alternative Name:	C3orf31 ( <a href="#">TAMM41 Products</a> )
Background:	<p>C3orf31 may be involved in the translocation of transit peptide-containing proteins across the mitochondrial inner membrane.</p> <p>Alias Symbols: DKFZp434E0519, MGC16471, TAM41, C3orf31</p> <p>Protein Size: 316</p>
Molecular Weight:	36 kDa
Gene ID:	132001
NCBI Accession:	<a href="#">NM_138807</a> , <a href="#">NP_620162</a>
UniProt:	<a href="#">Q96BW9</a>

## Application Details

Application Notes:	Optimal working dilutions should be determined experimentally by the investigator.
Comment:	Antigen size: 316 AA
Restrictions:	For Research Use only

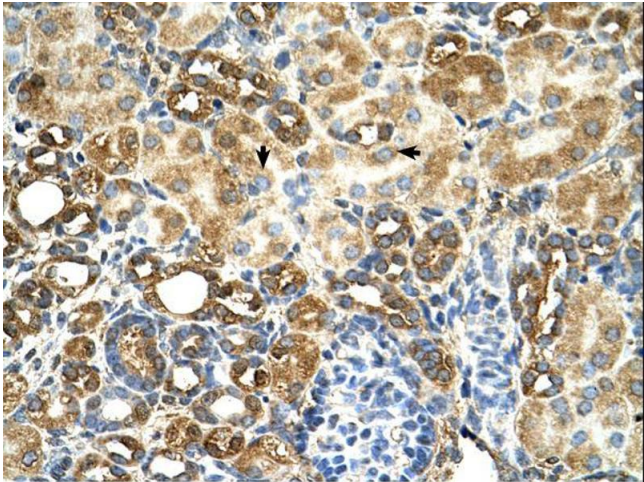
## Handling

Format:	Liquid
Concentration:	Lot specific
Buffer:	Liquid. Purified antibody supplied in 1x PBS buffer with 0.09 % (w/v) sodium azide and 2 % sucrose.
Preservative:	Sodium azide
Precaution of Use:	This product contains Sodium azide: a POISONOUS AND HAZARDOUS SUBSTANCE which should be handled by trained staff only.
Handling Advice:	Avoid repeated freeze-thaw cycles.
Storage:	-20 °C
Storage Comment:	For short term use, store at 2-8°C up to 1 week. For long term storage, store at -20°C in small aliquots to prevent freeze-thaw cycles.



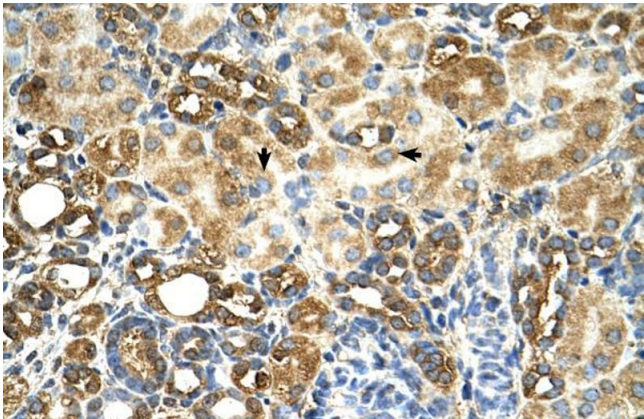
Western Blotting

**Image 1.** WB Suggested Antibody Titration: 2.5 ug/ml  
Positive Control: HepG0



Immunohistochemistry

**Image 2.**



Immunohistochemistry

**Image 3.** Human kidney