

Datasheet for ABIN2783112

anti-GLYCTK antibody (Middle Region)[Go to Product page](#)**1** Image

Overview

Quantity:	100 µL
Target:	GLYCTK
Binding Specificity:	Middle Region
Reactivity:	Human, Mouse, Rat, Cow, Dog, Guinea Pig, Horse, Rabbit, Saccharomyces cerevisiae
Host:	Rabbit
Clonality:	Polyclonal
Conjugate:	This GLYCTK antibody is un-conjugated
Application:	Western Blotting (WB)

Product Details

Immunogen:	The immunogen is a synthetic peptide directed towards the middle region of human GLYCTK
Sequence:	KPHSRVQVFE GAEDNLPDRD ALRAALAIQQ LAEGLTADDL LLVLISGGGS
Predicted Reactivity:	Cow: 100%, Dog: 100%, Guinea Pig: 100%, Horse: 100%, Human: 100%, Mouse: 100%, Rabbit: 93%, Rat: 100%, Yeast: 82%
Characteristics:	This is a rabbit polyclonal antibody against GLYCTK. It was validated on Western Blot.
Purification:	Affinity Purified

Target Details

Target:	GLYCTK
Alternative Name:	GLYCTK (GLYCTK Products)

Target Details

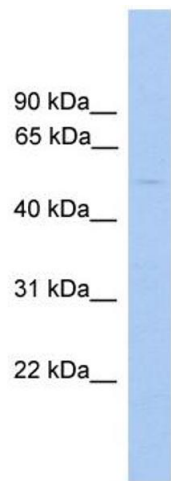
Background:	Deficiency of human glycerate kinase leads to D-glycerate acidemia/D-glyceric aciduria. Alias Symbols: GLYCTK1, HBEBP2, HBeAgBP4A, HBEBP4 Protein Interaction Partner: TRIM42, FAM154A, DTX2, KLHL12, TUBGCP4, RBPMS, CALCOCO2, TRIP13, TRIM27, REL, KRT15, GOLGA2, STK33, UBP1, Protein Size: 523
Molecular Weight:	55 kDa
Gene ID:	132158
NCBI Accession:	NM_145262 , NP_660305
UniProt:	Q8IVS8

Application Details

Application Notes:	Optimal working dilutions should be determined experimentally by the investigator.
Comment:	Antigen size: 523 AA
Restrictions:	For Research Use only

Handling

Format:	Liquid
Concentration:	Lot specific
Buffer:	Liquid. Purified antibody supplied in 1x PBS buffer with 0.09 % (w/v) sodium azide and 2 % sucrose.
Preservative:	Sodium azide
Precaution of Use:	This product contains Sodium azide: a POISONOUS AND HAZARDOUS SUBSTANCE which should be handled by trained staff only.
Handling Advice:	Avoid repeated freeze-thaw cycles.
Storage:	-20 °C
Storage Comment:	For short term use, store at 2-8°C up to 1 week. For long term storage, store at -20°C in small aliquots to prevent freeze-thaw cycles.



Western Blotting

Image 1. WB Suggested Anti-GLYCTK Antibody Titration:
0.2-1 ug/ml ELISA Titer: 1:12500 Positive Control: PANC1
cell lysate