

Datasheet for ABIN2783123
anti-ZNF169 antibody (Middle Region)

3 Images

[Go to Product page](#)

Overview

Quantity:	100 µL
Target:	ZNF169
Binding Specificity:	Middle Region
Reactivity:	Human, Mouse, Rat, Cow, Dog, Horse, Pig, Rabbit, Guinea Pig
Host:	Rabbit
Clonality:	Polyclonal
Conjugate:	This ZNF169 antibody is un-conjugated
Application:	Western Blotting (WB), Immunohistochemistry (IHC)

Product Details

Immunogen:	The immunogen is a synthetic peptide directed towards the middle region of human ZNF169
Sequence:	HQRTHTGEKP YLCPECGRRF SQKASLSIHQ RKHSGEKPYV CRECGRHFY
Predicted Reactivity:	Cow: 92%, Dog: 100%, Guinea Pig: 92%, Horse: 100%, Human: 100%, Mouse: 92%, Pig: 100%, Rabbit: 92%, Rat: 92%
Characteristics:	This is a rabbit polyclonal antibody against ZNF169. It was validated on Western Blot and immunohistochemistry.
Purification:	Affinity Purified

Target Details

Target:	ZNF169
---------	--------

Target Details

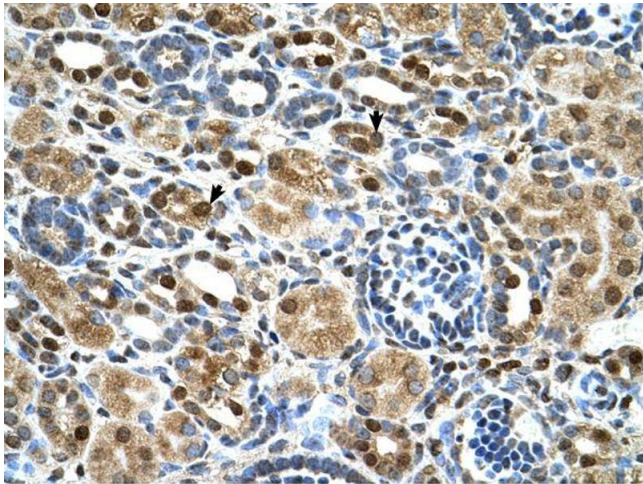
Alternative Name:	ZNF169 (ZNF169 Products)
Background:	ZNF169 may be involved in transcriptional regulation. Alias Symbols: MGC51961 Protein Interaction Partner: KRTAP10-7, CEP70, CCNDBP1, Protein Size: 603
Molecular Weight:	68 kDa
Gene ID:	169841
NCBI Accession:	NM_194320 , NP_919301
UniProt:	A2AGP5

Application Details

Application Notes:	Optimal working dilutions should be determined experimentally by the investigator.
Comment:	Antigen size: 603 AA
Restrictions:	For Research Use only

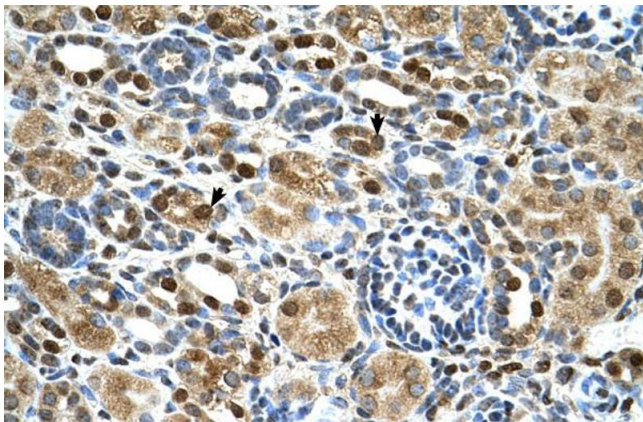
Handling

Format:	Liquid
Concentration:	Lot specific
Buffer:	Liquid. Purified antibody supplied in 1x PBS buffer with 0.09 % (w/v) sodium azide and 2 % sucrose.
Preservative:	Sodium azide
Precaution of Use:	This product contains Sodium azide: a POISONOUS AND HAZARDOUS SUBSTANCE which should be handled by trained staff only.
Handling Advice:	Avoid repeated freeze-thaw cycles.
Storage:	-20 °C
Storage Comment:	For short term use, store at 2-8°C up to 1 week. For long term storage, store at -20°C in small aliquots to prevent freeze-thaw cycles.



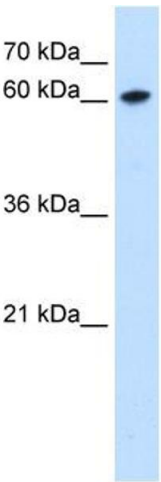
Immunohistochemistry

Image 1.



Immunohistochemistry

Image 2. Human kidney



Western Blotting

Image 3. WB Suggested Anti-ZNF169 Antibody Titration:
0.25ug/ml Positive Control: HepG2 cell lysate