

Datasheet for ABIN2783125
anti-GAS7 antibody (N-Term)[Go to Product page](#)

3 Images

Overview

Quantity:	100 µL
Target:	GAS7
Binding Specificity:	N-Term
Reactivity:	Human, Pig
Host:	Rabbit
Clonality:	Polyclonal
Conjugate:	This GAS7 antibody is un-conjugated
Application:	Western Blotting (WB)

Product Details

Immunogen:	The immunogen is a synthetic peptide directed towards the N terminal region of human GAS7
Sequence:	SGARCRTLYP FSGERHGQGL RFAAGELITL LQVPDGGWWE GEKEDGLRGW
Predicted Reactivity:	Human: 100%, Pig: 100%
Characteristics:	This is a rabbit polyclonal antibody against GAS7. It was validated on Western Blot using a cell lysate as a positive control.
Purification:	Affinity Purified

Target Details

Target:	GAS7
Alternative Name:	GAS7 (GAS7 Products)

Target Details

Background:	<p>The growth arrest-specific 7 (GAS7) gene is expressed primarily in terminally differentiated brain cells and predominantly in mature cerebellar Purkinje neurons. GAS7 plays a putative role in neuronal development. Growth arrest-specific 7 is expressed primarily in terminally differentiated brain cells and predominantly in mature cerebellar Purkinje neurons. GAS7 plays a putative role in neuronal development. Several transcript variants encoding proteins which vary in the N-terminus have been described.</p> <p>Alias Symbols: KIAA0394, MGC1348, MLL/GAS7</p> <p>Protein Interaction Partner: WDYHV1, GAS7, APBB1IP, CYFIP2, CYFIP1, NCKAP1, KHDRBS1, SF3A1, WASF2, ABI1, SF1, WAS, SFPQ, RPLP0, HNRNPU, NCKAP1L, GAPDH, DIAPH1, FMNL1, CREB3L2, ATXN1L, PACSIN1, ACTA1,</p> <p>Protein Size: 476</p>
Molecular Weight:	54 kDa
Gene ID:	8522
NCBI Accession:	NM_201433 , NP_958839
UniProt:	O60861

Application Details

Application Notes:	Optimal working dilutions should be determined experimentally by the investigator.
Comment:	Antigen size: 476 AA
Restrictions:	For Research Use only

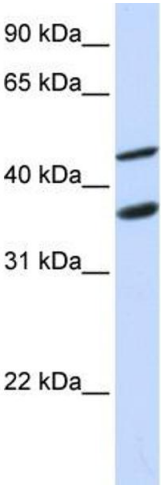
Handling

Format:	Liquid
Concentration:	Lot specific
Buffer:	Liquid. Purified antibody supplied in 1x PBS buffer with 0.09 % (w/v) sodium azide and 2 % sucrose.
Preservative:	Sodium azide
Precaution of Use:	This product contains Sodium azide: a POISONOUS AND HAZARDOUS SUBSTANCE which should be handled by trained staff only.
Handling Advice:	Avoid repeated freeze-thaw cycles.
Storage:	-20 °C

Handling

Storage Comment: For short term use, store at 2-8°C up to 1 week. For long term storage, store at -20°C in small aliquots to prevent freeze-thaw cycles.

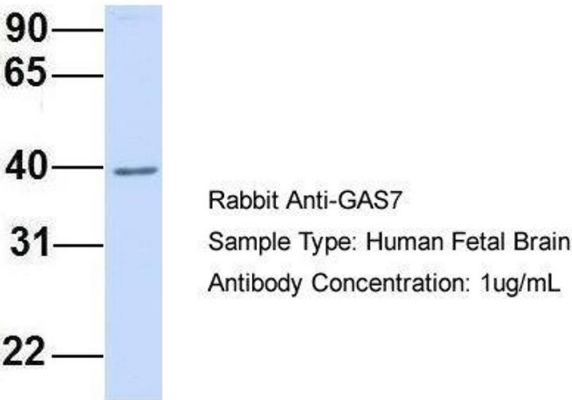
Images



Western Blotting

Image 1. WB Suggested Anti-GAS7 Antibody Titration: 0.2-1 ug/ml ELISA Titer: 1:312500 Positive Control: MCF7 cell lysate

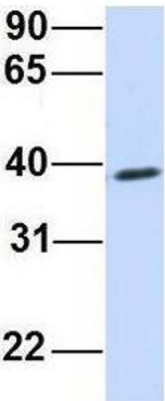
GAS7



Western Blotting

Image 2. Host: Rabbit Target Name: GAS7 Sample Type: Human Fetal Brain Antibody Dilution: 1.0ug/ml

GAS7



Western Blotting

Image 3. Host: Rabbit Target Name: GAS7 Sample Type: Human 721_B Antibody Dilution: 1.0ug/ml There is BioGPS gene expression data showing that GAS7 is expressed in 721_B