

Datasheet for ABIN2783149  
**anti-THG1L antibody (N-Term)**[Go to Product page](#)

## 1 Image

## Overview

|                      |   |
|----------------------|---|
| Quantity:            | 100 µL  |
| Target:              | THG1L   |
| Binding Specificity: | N-Term  |
| Reactivity:          | Human, Mouse, Rat, Rabbit, Dog, Horse, Guinea Pig, Cow, Saccharomyces cerevisiae, Zebrafish (Danio rerio) |
| Host:                | Rabbit  |
| Clonality:           | Polyclonal  |
| Conjugate:           | This THG1L antibody is un-conjugated  |
| Application:         | Western Blotting (WB)   |

## Product Details

|                       |   |
|-----------------------|---|
| Immunogen:            | The immunogen is a synthetic peptide corresponding to a region of Mouse   |
| Sequence:             | RNFHRFAEEH NFAKPND SRA LHLMTKCAQT VMEELEDIVI AYGQSDEYSF   |
| Predicted Reactivity: | Cow: 86%, Dog: 100%, Guinea Pig: 93%, Horse: 100%, Human: 100%, Mouse: 93%, Rabbit: 100%, Rat: 100%, Yeast: 92%, Zebrafish: 82% |
| Characteristics:      | This is a rabbit polyclonal antibody against Thg1l. It was validated on Western Blot.   |
| Purification:         | Affinity Purified   |

## Target Details

|         |       |
|---------|-------|
| Target: | THG1L |
|---------|-------|

## Target Details

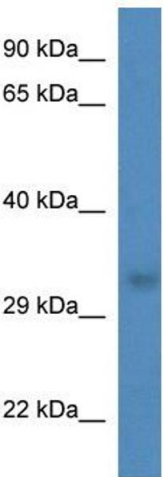
|                   |  |
|-------------------|--|
| Alternative Name: | Thg1l ( <a href="#">THG1L Products</a> )   |
| Background:       | <p>Thg1l adds a GMP to the 5'-end of tRNA(His) after transcription and RNase P cleavage. This step is essential for proper recognition of the tRNA and for the fidelity of protein synthesis.</p> <p>Alias Symbols: 1700121M19Rik, 5730409G07Rik, AA387658, MGC107321, RP23-298M7.6</p> <p>Protein Size: 298</p> |
| Molecular Weight: | 35 kDa   |
| Gene ID:          | 66628  |
| NCBI Accession:   | <a href="#">NM_001080969</a> , <a href="#">NP_001074438</a>  |
| UniProt:          | <a href="#">Q9CY52</a>   |

## Application Details

|                    |  |
|--------------------|--|
| Application Notes: | Optimal working dilutions should be determined experimentally by the investigator. |
| Comment:           | Antigen size: 298 AA   |
| Restrictions:      | For Research Use only  |

## Handling

|                    |   |
|--------------------|---|
| Format:            | Liquid  |
| Concentration:     | Lot specific  |
| Buffer:            | Liquid. Purified antibody supplied in 1x PBS buffer with 0.09 % (w/v) sodium azide and 2 % sucrose.                                     |
| Preservative:      | Sodium azide  |
| Precaution of Use: | This product contains Sodium azide: a POISONOUS AND HAZARDOUS SUBSTANCE which should be handled by trained staff only.                  |
| Handling Advice:   | Avoid repeated freeze-thaw cycles.  |
| Storage:           | -20 °C  |
| Storage Comment:   | For short term use, store at 2-8°C up to 1 week. For long term storage, store at -20°C in small aliquots to prevent freeze-thaw cycles. |



Western Blotting

**Image 1.** WB Suggested Anti-Thg1l Antibody Titration: 1.0 ug/ml Positive Control: Mouse Spleen