

Datasheet for ABIN2783150
anti-THG1L antibody (Middle Region)[Go to Product page](#)

1 Image

Overview

Quantity:	100 µL
Target:	THG1L
Binding Specificity:	Middle Region
Reactivity:	Human, Mouse, Rat, Rabbit, Dog, Horse, Guinea Pig, Cow, Saccharomyces cerevisiae, Zebrafish (Danio rerio), Pig
Host:	Rabbit
Clonality:	Polyclonal
Conjugate:	This THG1L antibody is un-conjugated
Application:	Western Blotting (WB)

Product Details

Immunogen:	The immunogen is a synthetic peptide directed towards the middle region of human THG1L
Sequence:	DCHINNLNT VFALIQQSG LTPVQAQGR L QGTLAADKNE ILFSEFNIN Y
Predicted Reactivity:	Cow: 93%, Dog: 93%, Guinea Pig: 86%, Horse: 93%, Human: 100%, Mouse: 79%, Pig: 91%, Rabbit: 100%, Rat: 86%, Yeast: 83%, Zebrafish: 83%
Characteristics:	This is a rabbit polyclonal antibody against THG1L. It was validated on Western Blot using a cell lysate as a positive control.
Purification:	Affinity Purified

Target Details

Target:	THG1L
---------	-------

Target Details

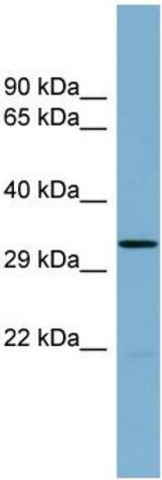
Alternative Name:	THG1L (THG1L Products)
Background:	<p>THG1L adds a GMP to the 5'-end of tRNA(His) after transcription and RNase P cleavage.</p> <p>Alias Symbols: FLJ11601, FLJ20546, ICF45</p> <p>Protein Interaction Partner: THG1L, SDCBP, DPP9, SH3GLB1, TPRKB, EEF2K, ARPC1A, ARPC2, TPD52L2, SH3GL1, RANGAP1, PRKAR1B, MTR, HARS, CALU, CALR, WDR92, TP53RK, AARSD1, SH3GLB2, NSUN2, UBC, PLS3, TERF1, ELMOD1,</p> <p>Protein Size: 298</p>
Molecular Weight:	35 kDa
Gene ID:	54974
NCBI Accession:	NM_017872 , NP_060342
UniProt:	Q9NWX6

Application Details

Application Notes:	Optimal working dilutions should be determined experimentally by the investigator.
Comment:	Antigen size: 298 AA
Restrictions:	For Research Use only

Handling

Format:	Liquid
Concentration:	Lot specific
Buffer:	Liquid. Purified antibody supplied in 1x PBS buffer with 0.09 % (w/v) sodium azide and 2 % sucrose.
Preservative:	Sodium azide
Precaution of Use:	This product contains Sodium azide: a POISONOUS AND HAZARDOUS SUBSTANCE which should be handled by trained staff only.
Handling Advice:	Avoid repeated freeze-thaw cycles.
Storage:	-20 °C
Storage Comment:	For short term use, store at 2-8°C up to 1 week. For long term storage, store at -20°C in small aliquots to prevent freeze-thaw cycles.



Western Blotting

Image 1. WB Suggested Anti-THG1L Antibody Titration: 0.2-1 ug/ml ELISA Titer: 1:312500 Positive Control: Human Spleen