



[Go to Product page](#)

Datasheet for ABIN2783182
anti-SPATA20 antibody (C-Term)

1 Image

Overview

Quantity:	100 µL
Target:	SPATA20
Binding Specificity:	C-Term
Reactivity:	Human, Mouse, Rabbit, Cow, Dog, Guinea Pig, Horse, Rat
Host:	Rabbit
Clonality:	Polyclonal
Conjugate:	This SPATA20 antibody is un-conjugated
Application:	Western Blotting (WB)

Product Details

Immunogen:	The immunogen is a synthetic peptide directed towards the C-terminal region of Human SPATA20
Sequence:	GFYSAEDADS PPERGQRPKE GAYYVWTVKE VQQLPEPVL GATEPLTSGQ
Predicted Reactivity:	Cow: 100%, Dog: 100%, Guinea Pig: 100%, Horse: 100%, Human: 100%, Mouse: 100%, Rabbit: 100%, Rat: 100%
Characteristics:	This is a rabbit polyclonal antibody against SPATA20. It was validated on Western Blot.
Purification:	Affinity Purified

Target Details

Target:	SPATA20
---------	---------

Target Details

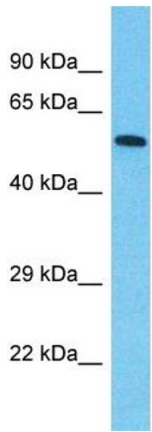
Alternative Name:	SPATA20 (SPATA20 Products)
Background:	SPATA20 may play a role in fertility regulation. Protein Interaction Partner: XRN1, ST6GALNAC4, CORO1A, Protein Size: 521
Molecular Weight:	57 kDa
Gene ID:	64847

Application Details

Application Notes:	Optimal working dilution should be determined by the investigator.
Restrictions:	For Research Use only

Handling

Format:	Liquid
Concentration:	1 mg/mL
Buffer:	Liquid. Purified antibody supplied in 1x PBS buffer with 0.09 % (w/v) sodium azide and 2 % sucrose.
Preservative:	Sodium azide
Precaution of Use:	This product contains Sodium azide: a POISONOUS AND HAZARDOUS SUBSTANCE which should be handled by trained staff only.
Handling Advice:	Avoid repeat freeze-thaw cycles.
Storage:	-20 °C
Storage Comment:	For short term use, store at 2-8°C up to 1 week. For long term storage, store at -20°C in small aliquots to prevent freeze-thaw cycles.



Host: Rabbit
Target Name: SPATA20
Sample Tissue: Colorectal Tumor Lysate
Antibody Dilution: 1.0µg/ml

Western Blotting

Image 1. Host: Rabbit Target Name: SPATA20 Sample Type: Colorectal Tumor lysates Antibody Dilution: 1.0ug/ml