



[Go to Product page](#)

Datasheet for ABIN2783185  
**anti-MIA2 antibody (Middle Region)**

2 Images

Overview

Quantity:	100 µL
Target:	MIA2
Binding Specificity:	Middle Region
Reactivity:	Human, Cow, Pig, Dog, Horse, Rabbit, Mouse, Rat, Guinea Pig
Host:	Rabbit
Clonality:	Polyclonal
Conjugate:	This MIA2 antibody is un-conjugated
Application:	Western Blotting (WB), Immunohistochemistry (IHC)

Product Details

Immunogen:	The immunogen is a synthetic peptide directed towards the middle region of human CTAGE5
Sequence:	KLSKVDEKIS HATEELETYR KRAKDLEEEL ERTIHSYQQQ IISHEKKAHD
Predicted Reactivity:	Cow: 100%, Dog: 100%, Guinea Pig: 87%, Horse: 100%, Human: 100%, Mouse: 93%, Pig: 93%, Rabbit: 93%, Rat: 93%
Characteristics:	This is a rabbit polyclonal antibody against CTAGE5. It was validated on Western Blot using a cell lysate as a positive control.
Purification:	Affinity Purified

Target Details

Target:	MIA2
---------	------

## Target Details

---

Alternative Name:	CTAGE5 ( <a href="#">MIA2 Products</a> )
Background:	CTAGE5 is a tumor-associated antigen. Alias Symbols: MEA6, MGEA, MGEA11, MGEA6 Protein Interaction Partner: RASAL2, PSMA3, AES, MAGEB18, TTC23L, CCHCR1, SS18L1, EMILIN1, CEP57, DGCR6, Dlg4, UBC, GRB2, ALB, Protein Size: 804
Molecular Weight:	91 kDa
Gene ID:	4253
NCBI Accession:	<a href="#">NM_005930</a> , <a href="#">NP_005921</a>
UniProt:	<a href="#">O15320</a>

## Application Details

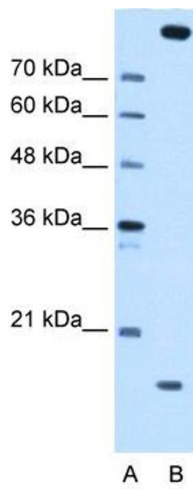
---

Application Notes:	Optimal working dilutions should be determined experimentally by the investigator.
Comment:	Antigen size: 804 AA
Restrictions:	For Research Use only

## Handling

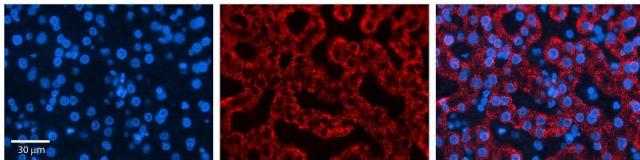
---

Format:	Liquid
Concentration:	Lot specific
Buffer:	Liquid. Purified antibody supplied in 1x PBS buffer with 0.09 % (w/v) sodium azide and 2 % sucrose.
Preservative:	Sodium azide
Precaution of Use:	This product contains Sodium azide: a POISONOUS AND HAZARDOUS SUBSTANCE which should be handled by trained staff only.
Handling Advice:	Avoid repeated freeze-thaw cycles.
Storage:	-20 °C
Storage Comment:	For short term use, store at 2-8°C up to 1 week. For long term storage, store at -20°C in small aliquots to prevent freeze-thaw cycles.



### Western Blotting

**Image 1.** WB Suggested Anti-CTAGE5 Antibody Titration: 0.2-1 ug/ml Positive Control: HepG2 cell lysate CTAGE5 is strongly supported by BioGPS gene expression data to be expressed in Human HepG2 cells



### Immunohistochemistry

**Image 2.** CTAGE5 antibody - middle region Formalin Fixed Paraffin Embedded Tissue: Human Liver Tissue Observed Staining: Cytoplasm in hepatocytes Primary Antibody Concentration: 1:600 Secondary Antibody: Donkey anti-Rabbit-Cy3 Secondary Antibody Concentration: 1:200 Magnification: 20X Exposure Time: 0.5 - 2.0 sec