

Datasheet for ABIN2783191
anti-SPACA7 antibody (Middle Region)[Go to Product page](#)

1 Image

Overview

| | |
|----------------------|---------------------------------------|
| Quantity: | 100 µL |
| Target: | SPACA7 (C13orf28) |
| Binding Specificity: | Middle Region |
| Reactivity: | Human |
| Host: | Rabbit |
| Clonality: | Polyclonal |
| Conjugate: | This SPACA7 antibody is un-conjugated |
| Application: | Western Blotting (WB) |

Product Details

| | |
|-----------------------|--|
| Immunogen: | The immunogen is a synthetic peptide directed towards the middle region of human C13orf28 |
| Sequence: | PGIEDKISND EANANANLHG DPSENYRGPQ VSPGSEKSVS SKEKNSKNTQ |
| Predicted Reactivity: | Human: 100% |
| Characteristics: | This is a rabbit polyclonal antibody against C13orf28. It was validated on Western Blot using a cell lysate as a positive control. |
| Purification: | Affinity Purified |

Target Details

| | |
|-------------------|--|
| Target: | SPACA7 (C13orf28) |
| Alternative Name: | C13orf28 (C13orf28 Products) |

Target Details

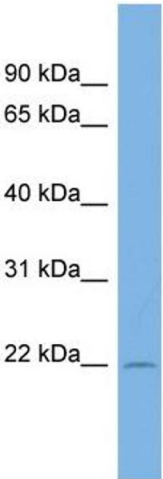
| | |
|-------------------|---|
| Background: | The function of this protein remains unknown. Alias Symbols: FLJ27356, C13orf28 Protein Size: 195 |
| Molecular Weight: | 21 kDa |
| Gene ID: | 122258 |
| NCBI Accession: | NM_145248 , NP_660291 |
| UniProt: | Q96KW9 |

Application Details

| | |
|--------------------|--|
| Application Notes: | Optimal working dilutions should be determined experimentally by the investigator. |
| Comment: | Antigen size: 195 AA |
| Restrictions: | For Research Use only |

Handling

| | |
|--------------------|---|
| Format: | Liquid |
| Concentration: | Lot specific |
| Buffer: | Liquid. Purified antibody supplied in 1x PBS buffer with 0.09 % (w/v) sodium azide and 2 % sucrose. |
| Preservative: | Sodium azide |
| Precaution of Use: | This product contains Sodium azide: a POISONOUS AND HAZARDOUS SUBSTANCE which should be handled by trained staff only. |
| Handling Advice: | Avoid repeated freeze-thaw cycles. |
| Storage: | -20 °C |
| Storage Comment: | For short term use, store at 2-8°C up to 1 week. For long term storage, store at -20°C in small aliquots to prevent freeze-thaw cycles. |



Western Blotting

Image 1. WB Suggested Anti-C13orf28 Antibody Titration:
0.2-1 ug/ml ELISA Titer: 1:62500 Positive Control:
COLO205 cell lysate