



[Go to Product page](#)

Datasheet for ABIN2783193
anti-C1ORF111 antibody (N-Term)

2 Images

Overview

Quantity:	100 µL
Target:	C1ORF111 (C1orf111)
Binding Specificity:	N-Term
Reactivity:	Human, Pig, Rabbit, Cow, Horse
Host:	Rabbit
Clonality:	Polyclonal
Conjugate:	This C1ORF111 antibody is un-conjugated
Application:	Western Blotting (WB)

Product Details

Immunogen:	The immunogen is a synthetic peptide directed towards the N terminal region of human C1orf111
Sequence:	DIAKTAVPTE ASSPAQALPP QYQSIIVRQG IQNTALSPDC SLGDTQHGEK
Predicted Reactivity:	Cow: 79%, Horse: 93%, Human: 100%, Pig: 86%, Rabbit: 86%
Characteristics:	This is a rabbit polyclonal antibody against C1orf111. It was validated on Western Blot.
Purification:	Affinity Purified

Target Details

Target:	C1ORF111 (C1orf111)
Alternative Name:	C1orf111 (C1orf111 Products)

Target Details

Background: The function of this protein remains unknown.
Alias Symbols: HSD20, RP11-565P22.3
Protein Interaction Partner: RBPMS, APP, CCDC85B,
Protein Size: 261

Molecular Weight: 29 kDa

Gene ID: 284680

NCBI Accession: [NM_182581](#), [NP_872387](#)

UniProt: [Q5T0L3](#)

Application Details

Application Notes: Optimal working dilutions should be determined experimentally by the investigator.

Comment: Antigen size: 261 AA

Restrictions: For Research Use only

Handling

Format: Liquid

Concentration: Lot specific

Buffer: Liquid. Purified antibody supplied in 1x PBS buffer with 0.09 % (w/v) sodium azide and 2 % sucrose.

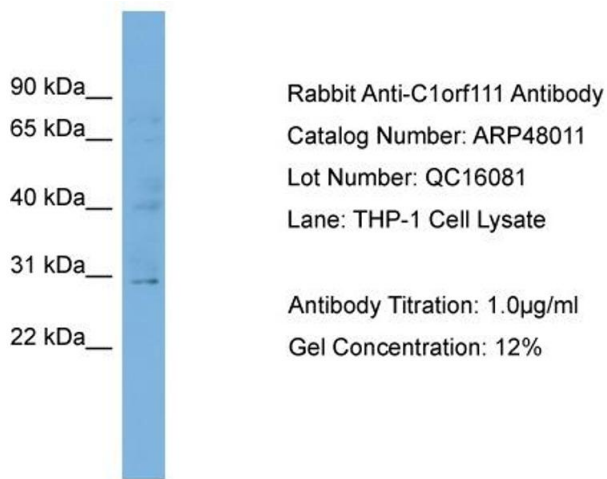
Preservative: Sodium azide

Precaution of Use: This product contains Sodium azide: a POISONOUS AND HAZARDOUS SUBSTANCE which should be handled by trained staff only.

Handling Advice: Avoid repeated freeze-thaw cycles.

Storage: -20 °C

Storage Comment: For short term use, store at 2-8°C up to 1 week. For long term storage, store at -20°C in small aliquots to prevent freeze-thaw cycles.

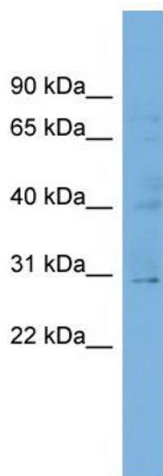


Western Blotting

Image 1. WB Suggested Anti-C1orf111

Antibody Titration: 0.2-1 µg/mL

Positive Control: THP-1 cell lysate



Western Blotting

Image 2. WB Suggested Anti-C1orf111 Antibody Titration:

0.2-1 ug/ml Positive Control: THP-1 cell lysate