

Datasheet for ABIN2783196  
**anti-SRRD antibody (Middle Region)**[Go to Product page](#)

## 4 Images

## Overview

|                      |                                     |
|----------------------|-------------------------------------|
| Quantity:            | 100 µL                              |
| Target:              | SRRD                                |
| Binding Specificity: | Middle Region                       |
| Reactivity:          | Human, Pig                          |
| Host:                | Rabbit                              |
| Clonality:           | Polyclonal                          |
| Conjugate:           | This SRRD antibody is un-conjugated |
| Application:         | Western Blotting (WB)               |

## Product Details

|                       |  |
|-----------------------|--|
| Immunogen:            | The immunogen is a synthetic peptide directed towards the middle region of human SRRD  |
| Sequence:             | DIFNDTSVHW FPVQKLEQLS IDIWEFREEP DYQDCEDLEI IRNKREDPSA   |
| Predicted Reactivity: | Human: 100%, Pig: 86%  |
| Characteristics:      | This is a rabbit polyclonal antibody against SRRD. It was validated on Western Blot using a cell lysate as a positive control. |
| Purification:         | Affinity Purified  |

## Target Details

|                   |  |
|-------------------|--|
| Target:           | SRRD                                   |
| Alternative Name: | SRRD ( <a href="#">SRRD Products</a> ) |

## Target Details

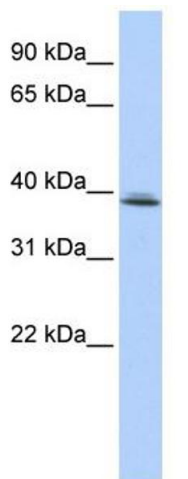
|                   |   |
|-------------------|---|
| Background:       | SRRD belongs to the SRR1 family. It may be involved in a circadian clock input pathway.<br>Alias Symbols: HC/HCC, srr1l, SRR1L<br>Protein Size: 339 |
| Molecular Weight: | 38 kDa  |
| Gene ID:          | 402055  |
| NCBI Accession:   | <a href="#">NM_001013694</a> , <a href="#">NP_001013716</a>   |
| UniProt:          | <a href="#">Q9UH36</a>  |

## Application Details

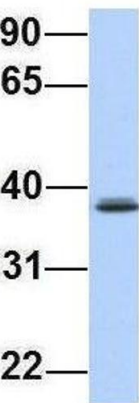
|                    |  |
|--------------------|--|
| Application Notes: | Optimal working dilutions should be determined experimentally by the investigator. |
| Comment:           | Antigen size: 339 AA   |
| Restrictions:      | For Research Use only  |

## Handling

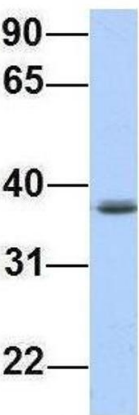
|                    |   |
|--------------------|---|
| Format:            | Liquid  |
| Concentration:     | Lot specific  |
| Buffer:            | Liquid. Purified antibody supplied in 1x PBS buffer with 0.09 % (w/v) sodium azide and 2 % sucrose.                                     |
| Preservative:      | Sodium azide  |
| Precaution of Use: | This product contains Sodium azide: a POISONOUS AND HAZARDOUS SUBSTANCE which should be handled by trained staff only.                  |
| Handling Advice:   | Avoid repeated freeze-thaw cycles.  |
| Storage:           | -20 °C  |
| Storage Comment:   | For short term use, store at 2-8°C up to 1 week. For long term storage, store at -20°C in small aliquots to prevent freeze-thaw cycles. |



**SRRD**



**SRRD**



**Western Blotting**

**Image 1.** WB Suggested Anti-SRRD Antibody Titration: 0.2-1 ug/ml ELISA Titer: 1:312500 Positive Control: HepG2 cell lysate

**Western Blotting**

**Image 2.** Host: Rabbit Target Name: SRRD Sample Type: 721\_B Antibody Dilution: 1.0ug/ml SRRD is supported by BioGPS gene expression data to be expressed in 721\_B

**Western Blotting**

**Image 3.** Host: Rabbit Target Name: SRRD Sample Type: Jurkat Antibody Dilution: 1.0ug/ml SRRD is supported by BioGPS gene expression data to be expressed in Jurkat

Please check the [product details page](#) for more images. Overall 4 images are available for ABIN2783196.