

Datasheet for ABIN2783198
anti-PPP2R5A antibody (N-Term)[Go to Product page](#)

2 Images

Overview

Quantity:	100 µL
Target:	PPP2R5A
Binding Specificity:	N-Term
Reactivity:	Human, Mouse, Rat, Cow, Dog, Rabbit, Guinea Pig, Horse, Goat, Zebrafish (Danio rerio)
Host:	Rabbit
Clonality:	Polyclonal
Conjugate:	This PPP2R5A antibody is un-conjugated
Application:	Western Blotting (WB)

Product Details

Immunogen:	The immunogen is a synthetic peptide directed towards the N terminal region of human PPP2R5A
Sequence:	YVSTNRGVIV ESAYSDIVKM ISANIFRTLPSDNPFDPE EDEPTLEASW
Predicted Reactivity:	Cow: 100%, Dog: 100%, Goat: 86%, Guinea Pig: 100%, Horse: 100%, Human: 100%, Mouse: 100%, Rabbit: 100%, Rat: 100%, Zebrafish: 93%
Characteristics:	This is a rabbit polyclonal antibody against PPP2R5A. It was validated on Western Blot using a cell lysate as a positive control.
Purification:	Affinity Purified

Target Details

Target:	PPP2R5A
---------	---------

Target Details

Alternative Name:	PPP2R5A (PPP2R5A Products)
Background:	<p>PPP2R5A belongs to the phosphatase 2A regulatory subunit B family. Protein phosphatase 2A is one of the four major Ser/Thr phosphatases, and it is implicated in the negative control of cell growth and division. It consists of a common heteromeric core enzyme, which is composed of a catalytic subunit and a constant regulatory subunit, that associates with a variety of regulatory subunits. The B regulatory subunit might modulate substrate selectivity and catalytic activity. The product of this gene belongs to the phosphatase 2A regulatory subunit B family. Protein phosphatase 2A is one of the four major Ser/Thr phosphatases, and it is implicated in the negative control of cell growth and division. It consists of a common heteromeric core enzyme, which is composed of a catalytic subunit and a constant regulatory subunit, that associates with a variety of regulatory subunits. The B regulatory subunit might modulate substrate selectivity and catalytic activity. This gene encodes an alpha isoform of the regulatory subunit B56 subfamily. Publication Note: This RefSeq record includes a subset of the publications that are available for this gene. Please see the Entrez Gene record to access additional publications.</p> <p>Alias Symbols: B56A, MGC131915, PR61A</p> <p>Protein Interaction Partner: ESPL1, PTTG1, UBC, CBX5, Mdm2, Ccng1, PYGM, NEK1, CHEK2, Soga1, Sgol1, Sgol2, Ppp2r1a, AXIN1, MYC, GNL3, TP63, SHC1, CSNK1A1, EIF2AK2, APC, NOS3, MAPT, BEST1, BCL2, JAK2, CTLA4, PPP2R1B, PPP2CA, PPP2R5C,</p> <p>Protein Size: 486</p>
Molecular Weight:	56 kDa
Gene ID:	5525
NCBI Accession:	NM_006243 , NP_006234
UniProt:	Q15172
Pathways:	PI3K-Akt Signaling

Application Details

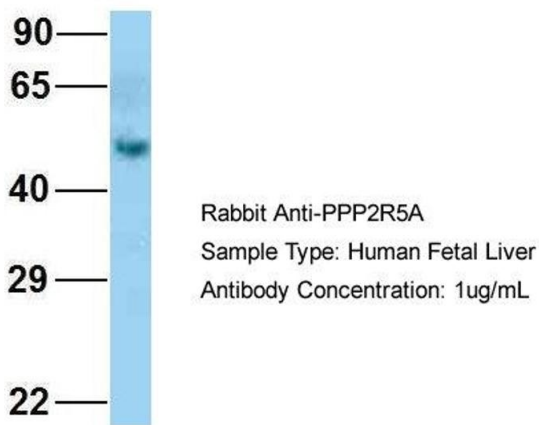
Application Notes:	Optimal working dilutions should be determined experimentally by the investigator.
Comment:	Antigen size: 486 AA
Restrictions:	For Research Use only

Handling

Format:	Liquid
Concentration:	Lot specific
Buffer:	Liquid. Purified antibody supplied in 1x PBS buffer with 0.09 % (w/v) sodium azide and 2 % sucrose.
Preservative:	Sodium azide
Precaution of Use:	This product contains Sodium azide: a POISONOUS AND HAZARDOUS SUBSTANCE which should be handled by trained staff only.
Handling Advice:	Avoid repeated freeze-thaw cycles.
Storage:	-20 °C
Storage Comment:	For short term use, store at 2-8°C up to 1 week. For long term storage, store at -20°C in small aliquots to prevent freeze-thaw cycles.

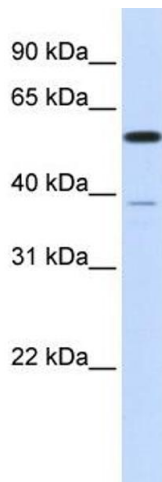
Images

PPP2R5A



Western Blotting

Image 1. Host: Rabbit Target Name: PPP2R5A Sample Type: Human Fetal Liver Antibody Dilution: 1.0ug/ml



Western Blotting

Image 2. WB Suggested Anti-PPP2R5A Antibody Titration: 0.2-1 ug/ml ELISA Titer: 1:12500 Positive Control: Transfected 293T