



[Go to Product page](#)

Datasheet for ABIN2783208
anti-ST14 antibody (Middle Region)

2 Images

Overview

Quantity:	100 µL
Target:	ST14
Binding Specificity:	Middle Region
Reactivity:	Human, Mouse, Rat, Cow, Guinea Pig, Horse, Dog, Pig, Rabbit, Zebrafish (Danio rerio)
Host:	Rabbit
Clonality:	Polyclonal
Conjugate:	This ST14 antibody is un-conjugated
Application:	Western Blotting (WB)

Product Details

Immunogen:	The immunogen is a synthetic peptide directed towards the middle region of human ST14
Sequence:	RHPGF E A T F F Q L P R M S S C G G R L R K A Q G T F N S P Y Y P G H Y P P N I D C T W N I E V
Predicted Reactivity:	Cow: 100%, Dog: 92%, Guinea Pig: 79%, Horse: 86%, Human: 100%, Mouse: 93%, Pig: 93%, Rabbit: 92%, Rat: 93%, Zebrafish: 75%
Characteristics:	This is a rabbit polyclonal antibody against ST14. It was validated on Western Blot.
Purification:	Affinity Purified

Target Details

Target:	ST14
Alternative Name:	ST14 (ST14 Products)

Target Details

Background: ST14 is an epithelial-derived, integral membrane serine protease. This protease forms a complex with the Kunitz-type serine protease inhibitor, HAI-1, and is found to be activated by sphingosine 1-phosphate. This protease has been shown to cleave and activate hepatocyte growth factor/scattering factor, and urokinase plasminogen activator, which suggest the function of this protease as an epithelial membrane activator for other proteases and latent growth factors. The expression of this protease has been associated with breast, colon, prostate, and ovarian tumors, which implicates its role in cancer invasion, and metastasis.

Alias Symbols: HAI, MT-SP1, MTSP-1, MTSP1, PRSS14, SNC19, TADG-15, TADG15, Tmprss14
Protein Interaction Partner: UBC, RGS16, PDGFC, CDCP1, SPINT1, F2RL1, PLAU, HGF,
Protein Size: 855

Molecular Weight: 95 kDa

Gene ID: 6768

NCBI Accession: [NM_021978](#), [NP_068813](#)

UniProt: [Q9Y5Y6](#)

Application Details

Application Notes: Optimal working dilutions should be determined experimentally by the investigator.

Comment: Antigen size: 855 AA

Restrictions: For Research Use only

Handling

Format: Liquid

Concentration: Lot specific

Buffer: Liquid. Purified antibody supplied in 1x PBS buffer with 0.09 % (w/v) sodium azide and 2 % sucrose.

Preservative: Sodium azide

Precaution of Use: This product contains Sodium azide: a POISONOUS AND HAZARDOUS SUBSTANCE which should be handled by trained staff only.

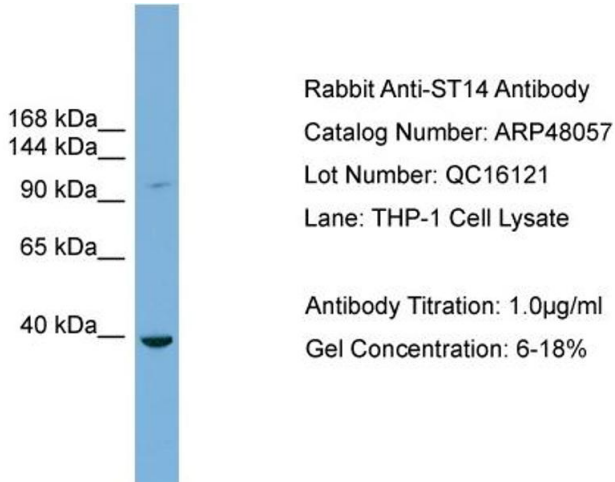
Handling Advice: Avoid repeated freeze-thaw cycles.

Storage: -20 °C

Handling

Storage Comment: For short term use, store at 2-8°C up to 1 week. For long term storage, store at -20°C in small aliquots to prevent freeze-thaw cycles.

Images

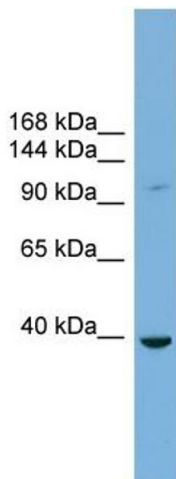


Western Blotting

Image 1. WB Suggested Anti-ST14

Antibody Titration: 0.2-1 µg/mL

Positive Control: THP-1 cell lysate



Western Blotting

Image 2. WB Suggested Anti-ST14 Antibody Titration: 0.2-1

ug/ml Positive Control: THP-1 cell lysate