

Datasheet for ABIN2783209
anti-PRAS40 antibody (C-Term)



[Go to Product page](#)

2 Images

Overview

Quantity:	100 µL
Target:	PRAS40 (AKT1S1)
Binding Specificity:	C-Term
Reactivity:	Human, Mouse, Rat, Cow, Guinea Pig, Horse, Dog
Host:	Rabbit
Clonality:	Polyclonal
Conjugate:	This PRAS40 antibody is un-conjugated
Application:	Western Blotting (WB), Immunohistochemistry (IHC)

Product Details

Immunogen:	The immunogen is a synthetic peptide directed towards the C terminal region of human AKT1S1
Sequence:	KSLPVSVPVW GFKEKRTEAR SSDEENGPPS SPDLDRIAAS MRALVLRREAE
Predicted Reactivity:	Cow: 100%, Dog: 93%, Guinea Pig: 100%, Horse: 100%, Human: 100%, Mouse: 100%, Rat: 100%
Characteristics:	This is a rabbit polyclonal antibody against AKT1S1. It was validated on Western Blot using a cell lysate as a positive control.
Purification:	Affinity Purified

Target Details

Target:	PRAS40 (AKT1S1)
---------	-----------------

Target Details

Alternative Name: [AKT1S1 \(AKT1S1 Products\)](#)

Background: AKT1S1 may play an important role in phosphatidylinositol 3-kinase (PI3K)-AKT1 survival signaling. It is the substrate for AKT1 phosphorylation, but can also be activated by AKT1-independent mechanisms. Its role in survival signaling pathways may be modulated by oxidative stress. AKT1S1 may also play a role in nerve growth factor-mediated neuroprotection. AKT1S1 is a proline-rich substrate of AKT (MIM 164730) that binds 14-3-3 protein (see YWHAH, MIM 113508) when phosphorylated (Kovacina et al., 2003 [PubMed 12524439]). [supplied by OMIM].

Alias Symbols: Lobe, MGC2865, PRAS40

Protein Interaction Partner: MTOR, RPTOR, SGK1, RICTOR, MAPKAP1, MLST8, FAM114A1, YWHAQ, YWHAB, SQSTM1, RPS6KA5, TCEA2, YWHAG, EIF6, AKT2, AKT1,

Protein Size: 256

Molecular Weight: 27 kDa

Gene ID: 84335

NCBI Accession: [NM_032375](#), [NP_115751](#)

UniProt: [Q96B36](#)

Pathways: [Fc-epsilon Receptor Signaling Pathway](#), [EGFR Signaling Pathway](#), [Neurotrophin Signaling Pathway](#), [Regulation of Cell Size](#), [Autophagy](#), [BCR Signaling](#), [Warburg Effect](#)

Application Details

Application Notes: Optimal working dilutions should be determined experimentally by the investigator.

Comment: Antigen size: 256 AA

Restrictions: For Research Use only

Handling

Format: Liquid

Concentration: Lot specific

Buffer: Liquid. Purified antibody supplied in 1x PBS buffer with 0.09 % (w/v) sodium azide and 2 % sucrose.

Preservative: Sodium azide

Precaution of Use: This product contains Sodium azide: a POISONOUS AND HAZARDOUS SUBSTANCE which

Handling

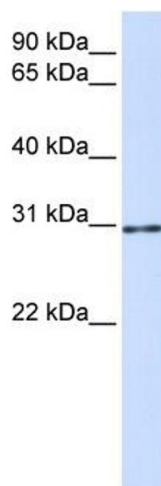
should be handled by trained staff only.

Handling Advice: Avoid repeated freeze-thaw cycles.

Storage: -20 °C

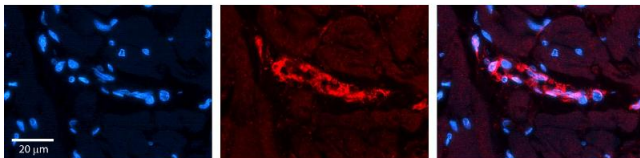
Storage Comment: For short term use, store at 2-8°C up to 1 week. For long term storage, store at -20°C in small aliquots to prevent freeze-thaw cycles.

Images



Western Blotting

Image 1. WB Suggested Anti-AKT1S1 Antibody Titration: 0.2-1 ug/ml ELISA Titer: 1:62500 Positive Control: 293T cell lysate



Immunohistochemistry

Image 2. Rabbit Anti-AKT1S1 Antibody Formalin Fixed Paraffin Embedded Tissue: Human heart Tissue Observed Staining: Cytoplasmic in endothelial cells in blood vessels Primary Antibody Concentration: 1:100 Other Working Concentrations: N/A Secondary Antibody: Donkey anti-Rabbit-Cy3 Secondary Antibody Concentration: 1:200 Magnification: 20X Exposure Time: 0.5 - 2.0 sec