

Datasheet for ABIN2783211
anti-C3orf33 antibody (Middle Region)[Go to Product page](#)

2 Images

Overview

Quantity:	100 µL
Target:	C3orf33
Binding Specificity:	Middle Region
Reactivity:	Human, Mouse, Rat, Cow, Dog, Guinea Pig, Horse, Rabbit
Host:	Rabbit
Clonality:	Polyclonal
Conjugate:	This C3orf33 antibody is un-conjugated
Application:	Western Blotting (WB)

Product Details

Immunogen:	The immunogen is a synthetic peptide directed towards the middle region of human C3orf33
Sequence:	NSALFCYLLV SKGGYFSVNL NEEILRRGLG KTVLVKGLKY DSKIYWTVHR
Predicted Reactivity:	Cow: 100%, Dog: 100%, Guinea Pig: 100%, Horse: 100%, Human: 100%, Mouse: 100%, Rabbit: 100%, Rat: 100%
Characteristics:	This is a rabbit polyclonal antibody against C3orf33. It was validated on Western Blot using a cell lysate as a positive control.
Purification:	Affinity Purified

Target Details

Target:	C3orf33
---------	---------

Target Details

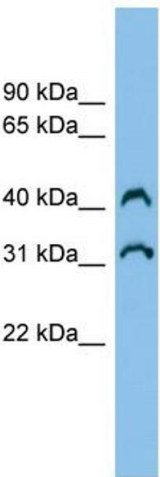
Alternative Name:	C3orf33 (C3orf33 Products)
Background:	The function of this protein remains unknown. Alias Symbols: FLJ31139, AC3-33 Protein Interaction Partner: APP, ELAVL1, Protein Size: 251
Molecular Weight:	29 kDa
Gene ID:	285315
NCBI Accession:	NM_173657 , NP_775928
UniProt:	Q96NB5

Application Details

Application Notes:	Optimal working dilutions should be determined experimentally by the investigator.
Comment:	Antigen size: 251 AA
Restrictions:	For Research Use only

Handling

Format:	Liquid
Concentration:	Lot specific
Buffer:	Liquid. Purified antibody supplied in 1x PBS buffer with 0.09 % (w/v) sodium azide and 2 % sucrose.
Preservative:	Sodium azide
Precaution of Use:	This product contains Sodium azide: a POISONOUS AND HAZARDOUS SUBSTANCE which should be handled by trained staff only.
Handling Advice:	Avoid repeated freeze-thaw cycles.
Storage:	-20 °C
Storage Comment:	For short term use, store at 2-8°C up to 1 week. For long term storage, store at -20°C in small aliquots to prevent freeze-thaw cycles.



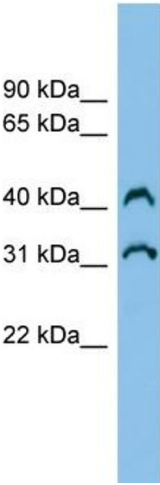
Western Blotting

Image 1. WB Suggested Anti-C3orf33 Antibody Titration:

0.2-1 ug/ml

ELISA Titer: 1:1562500

Positive Control: Human kidney



Rabbit Anti-C3orf33 Antibody

Catalog Number: ARP48063

Lot Number: QC16422

Lane: Fetal Kidney Lysate

Antibody Titration: 1.0µg/ml

Gel Concentration: 12%

Western Blotting

Image 2. WB Suggested Anti-C3orf33 Antibody Titration:

0.2-1 ug/ml ELISA Titer: 1:1562500 Positive Control: Human kidney