

Datasheet for ABIN2783214
anti-IL28RA antibody (N-Term)[Go to Product page](#)

2 Images

1 Publication

Overview

Quantity:	100 µL
Target:	IL28RA
Binding Specificity:	N-Term
Reactivity:	Human, Mouse, Rat, Cow, Dog, Horse, Rabbit, Guinea Pig
Host:	Rabbit
Clonality:	Polyclonal
Conjugate:	This IL28RA antibody is un-conjugated
Application:	Western Blotting (WB)

Product Details

Immunogen:	The immunogen is a synthetic peptide directed towards the N terminal region of human IL28RA
Sequence:	EECAGTKELL CSMMCLKKQD LYNKFKGRVR TVSPSSKSPW VESEYLDYLF
Predicted Reactivity:	Cow: 92%, Dog: 100%, Guinea Pig: 100%, Horse: 86%, Human: 100%, Mouse: 77%, Rabbit: 86%, Rat: 92%
Characteristics:	This is a rabbit polyclonal antibody against IL28RA. It was validated on Western Blot using a cell lysate as a positive control.
Purification:	Affinity Purified

Target Details

Target:	IL28RA
---------	--------

Target Details

Alternative Name: IL28RA ([IL28RA Products](#))

Background: IL28RA belongs to the class II cytokine receptor family. This protein forms a receptor complex with interleukine 10 receptor, beta (IL10RB). The receptor complex has been shown to interact with three closely related cytokines, including interleukin 28A (IL28A), interleukin 28B (IL28B), and interleukin 29 (IL29). The expression of all three cytokines can be induced by viral infection. The cells overexpressing this protein have been found to have enhanced responses to IL28A and IL29, but decreased response to IL28B. The protein encoded by this gene belongs to the class II cytokine receptor family. This protein forms a receptor complex with interleukine 10 receptor, beta (IL10RB). The receptor complex has been shown to interact with three closely related cytokines, including interleukin 28A (IL28A), interleukin 28B (IL28B), and interleukin 29 (IL29). The expression of all three cytokines can be induced by viral infection. The cells overexpressing this protein have been found to have enhanced responses to IL28A and IL29, but decreased response to IL28B. Three alternatively spliced transcript variants encoding distinct isoforms have been reported.

Alias Symbols: CRF2/12, IFNLR, IFNLR1, LICR2, il-28r1, IL-28R1, IL28RA

Protein Interaction Partner: IFNLR1, IFNL1, IFNL2, LSM8,

Protein Size: 491

Molecular Weight: 54 kDa

Gene ID: 163702

NCBI Accession: [NM_173064](#), [NP_775087](#)

UniProt: [Q5VTX8](#)

Application Details

Application Notes: Optimal working dilutions should be determined experimentally by the investigator.

Comment: Antigen size: 491 AA

Restrictions: For Research Use only

Handling

Format: Liquid

Concentration: Lot specific

Buffer: Liquid. Purified antibody supplied in 1x PBS buffer with 0.09 % (w/v) sodium azide and 2 % sucrose.

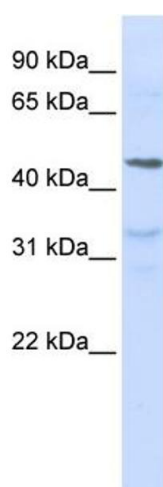
Handling

Preservative:	Sodium azide
Precaution of Use:	This product contains Sodium azide: a POISONOUS AND HAZARDOUS SUBSTANCE which should be handled by trained staff only.
Handling Advice:	Avoid repeated freeze-thaw cycles.
Storage:	-20 °C
Storage Comment:	For short term use, store at 2-8°C up to 1 week. For long term storage, store at -20°C in small aliquots to prevent freeze-thaw cycles.

Publications

Product cited in:	Craxton: "Evolutionary genomics of plant genes encoding N-terminal-TM-C2 domain proteins and the similar FAM62 genes and synaptotagmin genes of metazoans." in: BMC genomics , Vol. 8, pp. 259, (2007) (PubMed).
-------------------	---

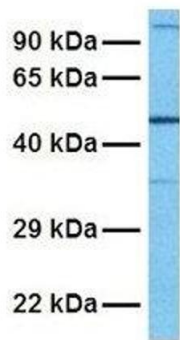
Images



Western Blotting

Image 1. WB Suggested Anti-IL28RA Antibody Titration: 0.2-1 ug/ml ELISA Titer: 1:312500 Positive Control: Jurkat cell lysate

IL28RA



Western Blotting

Image 2. Host: Rabbit Target Name: IL28RA Sample Tissue: Human Fetal Lung Antibody Dilution: 1.0ug/ml