

Datasheet for ABIN2783217
anti-SAA1 antibody (Middle Region)[Go to Product page](#)[1 Image](#)[1 Publication](#)

Overview

Quantity:	100 µL
Target:	SAA1
Binding Specificity:	Middle Region
Reactivity:	Human, Dog, Mouse, Rat, Guinea Pig, Horse, Pig, Rabbit, Cow, Sheep, Zebrafish (Danio rerio), Goat
Host:	Rabbit
Clonality:	Polyclonal
Conjugate:	This SAA1 antibody is un-conjugated
Application:	Western Blotting (WB)

Product Details

Immunogen:	The immunogen is a synthetic peptide directed towards the middle region of Mouse Saa1
Sequence:	DKYFHARGNY DAAQRGPGGV WAAEKISDGR EAFQEFGGRG HEDTIADQEA
Predicted Reactivity:	Cow: 93%, Dog: 93%, Goat: 93%, Guinea Pig: 92%, Horse: 100%, Human: 100%, Mouse: 93%, Pig: 93%, Rabbit: 100%, Rat: 100%, Sheep: 92%, Zebrafish: 85%
Characteristics:	This is a rabbit polyclonal antibody against Saa1. It was validated on Western Blot.
Purification:	Affinity Purified

Target Details

Target:	SAA1
---------	------

Target Details

Alternative Name:	Saa1 (SAA1 Products)
Background:	Saa1 is a major acute phase reactant and apolipoprotein of the HDL complex. Alias Symbols: Saa-1, Saa2 Protein Size: 122
Molecular Weight:	14 kDa
Gene ID:	20208
NCBI Accession:	NM_009117 , NP_033143
UniProt:	P05366
Pathways:	Toll-Like Receptors Cascades

Application Details

Application Notes:	Optimal working dilution should be determined by the investigator.
Restrictions:	For Research Use only

Handling

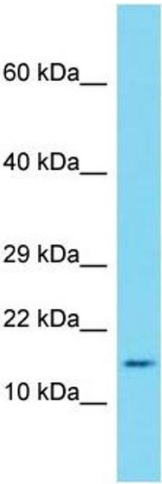
Format:	Liquid
Concentration:	1 mg/mL
Buffer:	Liquid. Purified antibody supplied in 1x PBS buffer with 0.09 % (w/v) sodium azide and 2 % sucrose.
Preservative:	Sodium azide
Precaution of Use:	This product contains Sodium azide: a POISONOUS AND HAZARDOUS SUBSTANCE which should be handled by trained staff only.
Handling Advice:	Avoid repeat freeze-thaw cycles.
Storage:	-20 °C
Storage Comment:	For short term use, store at 2-8°C up to 1 week. For long term storage, store at -20°C in small aliquots to prevent freeze-thaw cycles.

Publications

Product cited in:	Suzuki, Fujisawa, Ando, Niino, Ohsawa, Shimokata, Ohta: "Alcohol dehydrogenase 2 variant is associated with cerebral infarction and lacunae." in: Neurology , Vol. 63, Issue 9, pp. 1711-3, (
-------------------	--

2004) ([PubMed](#)).

Images



Western Blotting

Image 1. Host: Rabbit Target Name: Saa1 Sample Type: Mouse Thymus lysates Antibody Dilution: 2.0ug/ml