



Datasheet for ABIN2783230
anti-CD36 antibody (N-Term)



[Go to Product page](#)

5 Images

Overview

Quantity:	100 µL
Target:	CD36
Binding Specificity:	N-Term
Reactivity:	Human, Rat, Pig, Dog, Goat, Horse, Rabbit, Cow
Host:	Rabbit
Clonality:	Polyclonal
Conjugate:	This CD36 antibody is un-conjugated
Application:	Western Blotting (WB), Immunohistochemistry (IHC)

Product Details

Immunogen:	The immunogen is a synthetic peptide directed towards the N terminal region of human CD36
Sequence:	MGCDRNCGLI AGAVIGAVLA VFGGILMPVG DLLIQKTIKK QVVLEEGTIA
Predicted Reactivity:	Cow: 79%, Dog: 79%, Goat: 79%, Horse: 79%, Human: 100%, Pig: 79%, Rabbit: 79%, Rat: 79%
Characteristics:	This is a rabbit polyclonal antibody against CD36. It was validated on Western Blot and immunohistochemistry.
Purification:	Affinity Purified

Target Details

Target:	CD36
Alternative Name:	CD36 (CD36 Products)

Target Details

Background: CD36 is the fourth major glycoprotein of the platelet surface and serves as a receptor for thrombospondin in platelets and various cell lines. Since thrombospondins are widely distributed proteins involved in a variety of adhesive processes, this protein may have important functions as a cell adhesion molecule. It binds to collagen, thrombospondin, anionic phospholipids and oxidized LDL. It directly mediates cytoadherence of Plasmodium falciparum parasitized erythrocytes and it binds long chain fatty acids and may function in the transport and/or as a regulator of fatty acid transport. Mutations in its gene cause platelet glycoprotein deficiency. The protein encoded by this gene is the fourth major glycoprotein of the platelet surface and serves as a receptor for thrombospondin in platelets and various cell lines. Since thrombospondins are widely distributed proteins involved in a variety of adhesive processes, this protein may have important functions as a cell adhesion molecule. It binds to collagen, thrombospondin, anionic phospholipids and oxidized LDL. It directly mediates cytoadherence of Plasmodium falciparum parasitized erythrocytes and it binds long chain fatty acids and may function in the transport and/or as a regulator of fatty acid transport. Mutations in this gene cause platelet glycoprotein deficiency. Three alternatively spliced transcript variants encoding the same protein isoform have been found for this gene.

Alias Symbols: CHDS7, FAT, GP3B, GP4, GPIV, PASIV, SCARB3, BDPLT10

Protein Interaction Partner: CHRD, APP, CAND1, ITGA2B, MATK, SRC, THBS1, ITGB3, LYN, YES1, ITGA6, CD9, FYN, ITGB1, COL1A2, COL1A1, VLDLR, LDLR, HSD11B1,

Protein Size: 472

Molecular Weight: 53 kDa

Gene ID: 948

NCBI Accession: [NM_001001547](#), [NP_001001547](#)

UniProt: [P16671](#)

Pathways: [TLR Signaling](#), [Peptide Hormone Metabolism](#), [Response to Growth Hormone Stimulus](#), [Activation of Innate immune Response](#), [Cellular Response to Molecule of Bacterial Origin](#), [Regulation of Lipid Metabolism by PPARalpha](#), [Positive Regulation of Immune Effector Process](#), [Production of Molecular Mediator of Immune Response](#), [Hepatitis C](#), [Toll-Like Receptors Cascades](#), [Lipid Metabolism](#), [S100 Proteins](#)

Application Details

Application Notes: Optimal working dilutions should be determined experimentally by the investigator.

Comment: Antigen size: 472 AA

Application Details

Restrictions: For Research Use only

Handling

Format: Liquid

Concentration: Lot specific

Buffer: Liquid. Purified antibody supplied in 1x PBS buffer with 0.09 % (w/v) sodium azide and 2 % sucrose.

Preservative: Sodium azide

Precaution of Use: This product contains Sodium azide: a POISONOUS AND HAZARDOUS SUBSTANCE which should be handled by trained staff only.

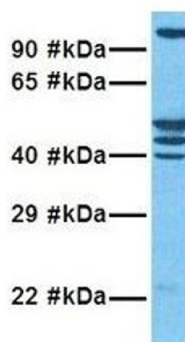
Handling Advice: Avoid repeated freeze-thaw cycles.

Storage: -20 °C

Storage Comment: For short term use, store at 2-8°C up to 1 week. For long term storage, store at -20°C in small aliquots to prevent freeze-thaw cycles.

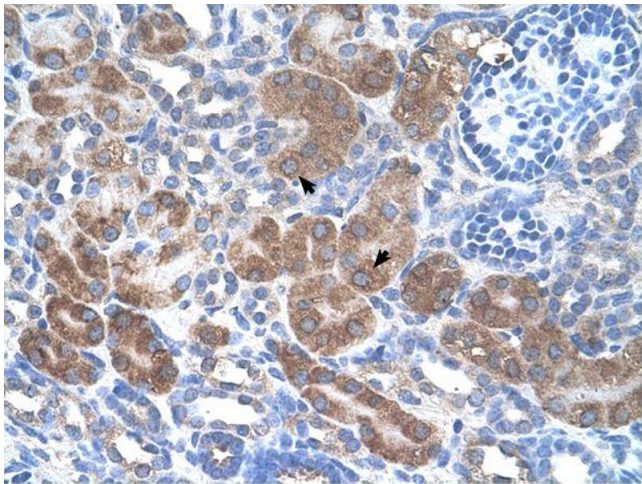
Images

CD36



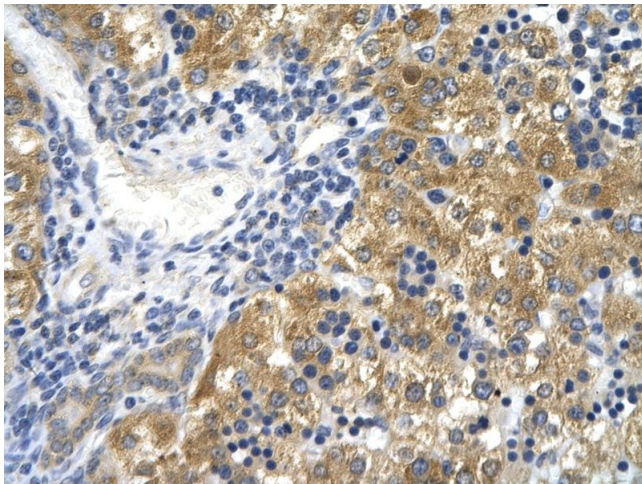
Western Blotting

Image 1. Host: Rabbit Target Name: CD36 Sample Tissue: Human Fetal Lung Antibody Dilution: 1.0ug/ml



Immunohistochemistry

Image 2.



Immunohistochemistry

Image 3. Rabbit Anti-CD36 Antibody Paraffin Embedded Tissue: Human hepatocyte Cellular Data: Epithelial cells of renal tubule Antibody Concentration: 4.0-8.0 ug/ml Magnification: 400X

Please check the [product details page](#) for more images. Overall 5 images are available for ABIN2783230.