

Datasheet for ABIN2783233
anti-OAT antibody (Middle Region)

5 Images

1 Publication

[Go to Product page](#)

Overview

Quantity:	100 µL
Target:	OAT
Binding Specificity:	Middle Region
Reactivity:	Human, Mouse, Rat, Cow, Horse, Rabbit, Dog, Guinea Pig, Zebrafish (Danio rerio), Pig
Host:	Rabbit
Clonality:	Polyclonal
Conjugate:	This OAT antibody is un-conjugated
Application:	Western Blotting (WB)

Product Details

Immunogen:	The immunogen is a synthetic peptide directed towards the middle region of human OAT
Sequence:	RTLSAISSST DPTSYDGFPG FMPGFDIIPY NDLPALERAL QDPNVAAFMV
Predicted Reactivity:	Cow: 100%, Dog: 93%, Guinea Pig: 86%, Horse: 100%, Human: 100%, Mouse: 100%, Pig: 100%, Rabbit: 100%, Rat: 100%, Zebrafish: 93%
Characteristics:	This is a rabbit polyclonal antibody against OAT. It was validated on Western Blot using a cell lysate as a positive control.
Purification:	Affinity Purified

Target Details

Target:	OAT
---------	-----

Target Details

Abstract: [OAT Products](#)

Background: OAT is a key enzyme in the pathway that converts arginine and ornithine into the major excitatory and inhibitory neurotransmitters glutamate and GABA. Mutations of this enzyme cause the autosomal recessive eye disease Gyrate Atrophy. This gene encodes the mitochondrial enzyme ornithine aminotransferase, which is a key enzyme in the pathway that converts arginine and ornithine into the major excitatory and inhibitory neurotransmitters glutamate and GABA. Mutations that result in a deficiency of this enzyme cause the autosomal recessive eye disease Gyrate Atrophy. Publication Note: This RefSeq record includes a subset of the publications that are available for this gene. Please see the Entrez Gene record to access additional publications. PRIMARYREFSEQ_SPAN PRIMARY_IDENTIFIER PRIMARY_SPAN COMP 1-42 DB459793.1 27-68 43-2062 BC016928.1 1-2020 2063-2066 M12267.1 2010-2013
Alias Symbols: DKFZp781A11155, HOGA, OKT, GACR, OATASE
Protein Interaction Partner: FUS, HUWE1, SUMO2, STAU1, UBC, ADRB2, ATF2, CTSA, FBXO6, UBQLN4, CDK2, SIRT7, NUDT3, HDAC5, MYC, ICT1, OTUD4, DMWD, SLC35F6, OAT, EIF6,
Protein Size: 439

Molecular Weight: 45 kDa

Gene ID: 4942

NCBI Accession: [NM_000274](#), [NP_000265](#)

UniProt: [P04181](#)

Application Details

Application Notes: Optimal working dilutions should be determined experimentally by the investigator.

Comment: Antigen size: 439 AA

Restrictions: For Research Use only

Handling

Format: Liquid

Concentration: Lot specific

Buffer: Liquid. Purified antibody supplied in 1x PBS buffer with 0.09 % (w/v) sodium azide and 2 % sucrose.

Preservative: Sodium azide

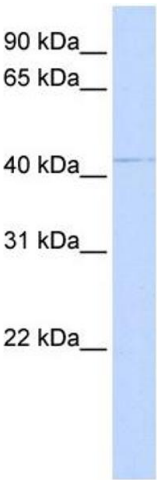
Handling

Precaution of Use:	This product contains Sodium azide: a POISONOUS AND HAZARDOUS SUBSTANCE which should be handled by trained staff only.
Handling Advice:	Avoid repeated freeze-thaw cycles.
Storage:	-20 °C
Storage Comment:	For short term use, store at 2-8°C up to 1 week. For long term storage, store at -20°C in small aliquots to prevent freeze-thaw cycles.

Publications

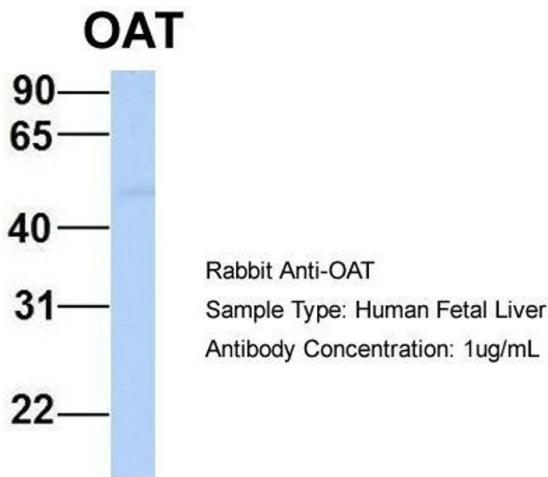
Product cited in:	Ewing, Chu, Elisma, Li, Taylor, Climie, McBroom-Cerajewski, Robinson, OConnor, Li, Taylor, Dharsee, Ho, Heilbut, Moore, Zhang, Ornatsky, Bukhman, Ethier, Sheng, Vasilescu, Abu-Farha, Lambert, Duewel et al.: "Large-scale mapping of human protein-protein interactions by mass spectrometry. ..." in: Molecular systems biology , Vol. 3, pp. 89, (2007) (PubMed).
-------------------	--

Images



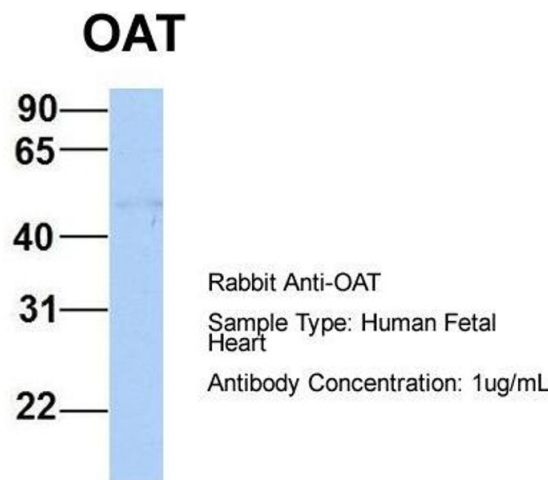
Western Blotting

Image 1. WB Suggested Anti-OAT Antibody Titration: 0.2-1 ug/ml ELISA Titer: 1:12500 Positive Control: 293T cell lysate OAT is supported by BioGPS gene expression data to be expressed in HEK293T



Western Blotting

Image 2. Host: Rabbit Target Name: OAT Sample Type:
Human Fetal Liver Antibody Dilution: 1.0ug/ml



Western Blotting

Image 3. Host: Rabbit Target Name: OAT Sample Type:
Human Fetal Heart Antibody Dilution: 1.0ug/ml

Please check the [product details page](#) for more images. Overall 5 images are available for ABIN2783233.