

Datasheet for ABIN2783234
anti-OAT antibody (C-Term)[Go to Product page](#)

3 Images

1 Publication

Overview

Quantity:	100 µL
Target:	OAT
Binding Specificity:	C-Term
Reactivity:	Human, Mouse, Rat, Cow, Horse, Rabbit, Dog, Guinea Pig, Zebrafish (Danio rerio)
Host:	Rabbit
Clonality:	Polyclonal
Conjugate:	This OAT antibody is un-conjugated
Application:	Western Blotting (WB), Immunohistochemistry (IHC)

Product Details

Immunogen:	The immunogen is a synthetic peptide directed towards the C terminal region of human OAT
Sequence:	VRGKGLLNAI VIKETKDWDA WKVCLRLRDN GLLAKPTHGD IIRFAPPLVI
Predicted Reactivity:	Cow: 100%, Dog: 100%, Guinea Pig: 100%, Horse: 100%, Human: 100%, Mouse: 100%, Rabbit: 100%, Rat: 100%, Zebrafish: 100%
Characteristics:	This is a rabbit polyclonal antibody against OAT. It was validated on Western Blot using a cell lysate as a positive control.
Purification:	Protein A purified

Target Details

Target:	OAT
---------	-----

Target Details

Abstract: [OAT Products](#)

Background: OAT is a key enzyme in the pathway that converts arginine and ornithine into the major excitatory and inhibitory neurotransmitters glutamate and GABA. Mutations of this enzyme cause the autosomal recessive eye disease Gyrate Atrophy. This gene encodes the mitochondrial enzyme ornithine aminotransferase, which is a key enzyme in the pathway that converts arginine and ornithine into the major excitatory and inhibitory neurotransmitters glutamate and GABA. Mutations that result in a deficiency of this enzyme cause the autosomal recessive eye disease Gyrate Atrophy. Publication Note: This RefSeq record includes a subset of the publications that are available for this gene. Please see the Entrez Gene record to access additional publications. PRIMARYREFSEQ_SPAN PRIMARY_IDENTIFIER PRIMARY_SPAN COMP 1-42 DB459793.1 27-68 43-2062 BC016928.1 1-2020 2063-2066 M12267.1 2010-2013 Alias Symbols: DKFZp781A11155, HOGA, OKT, GACR, OATASE Protein Interaction Partner: FUS, HUWE1, SUMO2, STAU1, UBC, ADRB2, ATF2, CTSA, FBXO6, UBQLN4, CDK2, SIRT7, NUDT3, HDAC5, MYC, ICT1, OTUD4, DMWD, SLC35F6, OAT, EIF6, Protein Size: 439

Molecular Weight: 45 kDa

Gene ID: 4942

NCBI Accession: [NM_000274](#), [NP_000265](#)

UniProt: [P04181](#)

Application Details

Application Notes: Optimal working dilutions should be determined experimentally by the investigator.

Comment: Antigen size: 439 AA

Restrictions: For Research Use only

Handling

Format: Liquid

Concentration: Lot specific

Buffer: Liquid. Purified antibody supplied in 1x PBS buffer with 0.09 % (w/v) sodium azide and 2 % sucrose.

Preservative: Sodium azide

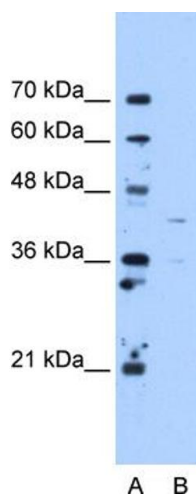
Handling

Precaution of Use:	This product contains Sodium azide: a POISONOUS AND HAZARDOUS SUBSTANCE which should be handled by trained staff only.
Handling Advice:	Avoid repeated freeze-thaw cycles.
Storage:	-20 °C
Storage Comment:	For short term use, store at 2-8°C up to 1 week. For long term storage, store at -20°C in small aliquots to prevent freeze-thaw cycles.

Publications

Product cited in:	<p>Sharma, Burdon, Chidlow, Klebe, Crawford, Dimasi, Dave, Martin, Javadiyan, Wood, Casson, Danoy, Griggs, Hewitt, Landers, Mitchell, Mackey, Craig: "Association of genetic variants in the TMC01 gene with clinical parameters related to glaucoma and characterization of the protein in the eye." in: Investigative ophthalmology & visual science, Vol. 53, Issue 8, pp. 4917-25, (2012) (PubMed).</p> <p>Burdon, Macgregor, Hewitt, Sharma, Chidlow, Mills, Danoy, Casson, Viswanathan, Liu, Landers, Henders, Wood, Souzeau, Crawford, Leo, Wang, Rochtchina, Nyholt, Martin, Montgomery, Mitchell, Brown et al.: "Genome-wide association study identifies susceptibility loci for open angle glaucoma at TMC01 and CDKN2B-AS1. ..." in: Nature genetics, Vol. 43, Issue 6, pp. 574-8, (2011) (PubMed).</p>
-------------------	---

Images



Western Blotting

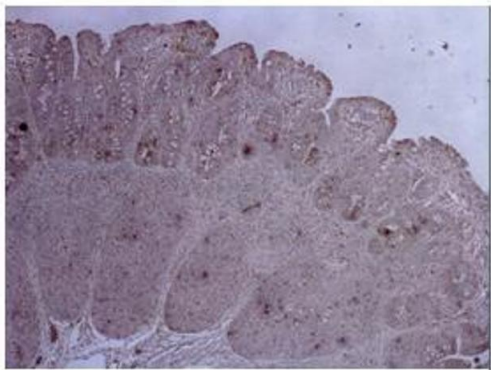
Image 1. WB Suggested Anti-OAT Antibody Titration:
5.0ug/ml Positive Control: HepG2 cell lysate

OAT



Brown: OAT

OAT



Brown: OAT

Immunohistochemistry

Image 2. Sample Type : Pig duodenum Primary Antibody Dilution : 1:500 Secondary Antibody : Anti-rabbit-biotin, streptavidin-HRP Secondary Antibody Dilution : 1:500 Color/Signal Descriptions : Brown: OAT Gene Name : OAT Submitted by : Juan C. Mari, USDA/ARS Children's Nutrition Research Center Baylor College of Medicine

Immunohistochemistry

Image 3. Sample Type : Pig ileum Primary Antibody Dilution : 1:500 Secondary Antibody : Anti-rabbit-biotin, streptavidin-HRP Secondary Antibody Dilution : 1:500 Color/Signal Descriptions : Brown: OAT Gene Name : OAT Submitted by : Juan C. Mari, USDA/ARS Children's Nutrition Research Center Baylor College of Medicine