

Datasheet for ABIN2783242  
**anti-TPI1 antibody (N-Term)**[Go to Product page](#)

2 Images

1 Publication

## Overview

Quantity:	100 µL
Target:	TPI1
Binding Specificity:	N-Term
Reactivity:	Human, Rabbit, Dog, Cow, Guinea Pig, Horse
Host:	Rabbit
Clonality:	Polyclonal
Conjugate:	This TPI1 antibody is un-conjugated
Application:	Western Blotting (WB)

## Product Details

Immunogen:	The immunogen is a synthetic peptide directed towards the N terminal region of human TPI1
Sequence:	MAPSRKFFVG GNWKMNGRKQ SLGELIGTLN AAKVPADTEV VCAPPTAYID
Predicted Reactivity:	Cow: 79%, Dog: 79%, Guinea Pig: 79%, Horse: 86%, Human: 100%, Rabbit: 79%
Characteristics:	This is a rabbit polyclonal antibody against TPI1. It was validated on Western Blot using a cell lysate as a positive control.
Purification:	Affinity Purified

## Target Details

Target:	TPI1
Alternative Name:	TPI1 ( <a href="#">TPI1 Products</a> )

## Target Details

Background:	<p>TPI1 belongs to the triosephosphate isomerase family. Defects in TPI1 are the cause of triosephosphate isomerase deficiency (TPI deficiency) . TPI deficiency is an autosomal recessive disorder. It is the most severe clinical disorder of glycolysis. It is associated with neonatal jaundice, chronic hemolytic anemia, progressive neuromuscular dysfunction, cardiomyopathy and increased susceptibility to infection.</p> <p>Alias Symbols: MGC88108, TPI, TIM</p> <p>Protein Interaction Partner: MDM2, UBC, RNF2, EZH2, SUZ12, TARDBP, YWHAQ, SP1, UBD, HCVgp1, IQCB1, ATF2, LIG4, SSU72, SEC23IP, PDIA6, PRDX6, VCL, UBA52, TKT, PGK1, MPST, GPI, GAPDH, ENO1, APP, CUL1, CDK2, TERF1, POT1, PSMA3, MAPK6, PCNA, HDAC5, UCHL5, EGFR, LIPT1, SETDB1, DDX24, CFL1</p> <p>Protein Size: 249</p>
Molecular Weight:	27 kDa
Gene ID:	7167
NCBI Accession:	<a href="#">NM_000365</a> , <a href="#">NP_000356</a>
UniProt:	<a href="#">P60174</a>
Pathways:	<a href="#">Cell RedoxHomeostasis</a>

## Application Details

Application Notes:	Optimal working dilutions should be determined experimentally by the investigator.
Comment:	Antigen size: 249 AA
Restrictions:	For Research Use only

## Handling

Format:	Liquid
Concentration:	Lot specific
Buffer:	Liquid. Purified antibody supplied in 1x PBS buffer with 0.09 % (w/v) sodium azide and 2 % sucrose.
Preservative:	Sodium azide
Precaution of Use:	This product contains Sodium azide: a POISONOUS AND HAZARDOUS SUBSTANCE which should be handled by trained staff only.
Handling Advice:	Avoid repeated freeze-thaw cycles.

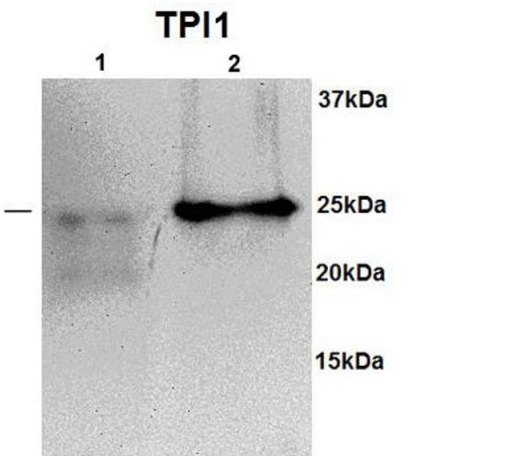
Handling

Storage:	-20 °C
Storage Comment:	For short term use, store at 2-8°C up to 1 week. For long term storage, store at -20°C in small aliquots to prevent freeze-thaw cycles.

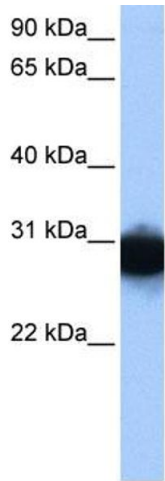
Publications

Product cited in:	Ralser, Nebel, Kleindorp, Krobitsch, Lehrach, Schreiber, Reinhardt, Timmermann: "Sequencing and genotypic analysis of the triosephosphate isomerase (TPI1) locus in a large sample of long-lived Germans." in: <b>BMC genetics</b> , Vol. 9, pp. 38, (2008) ( <a href="#">PubMed</a> ).
-------------------	---

Images



See Immunoblot 2 Data for more information.



Western Blotting

**Image 1. Sample type:** 1. HEPG2 (50ug)  
2. Drosophila extract (50ug)

**Primary dilution:** 1:1000

**Secondary Antibody:** mouse anti-Rabbit HRP

**Secondary Dilution:** 1:5000

**Image Submitted by:** Xinyang Bing  
Laurentian University

Western Blotting

**Image 2.** WB Suggested Anti-TPI1 Antibody Titration: 0.2-1 ug/ml Positive Control: HepG2 cell lysate