

Datasheet for ABIN2783247  
**anti-PDHB antibody (N-Term)**[Go to Product page](#)

## 2 Images

## Overview

Quantity:	100 µL
Target:	PDHB
Binding Specificity:	N-Term
Reactivity:	Human, Rat, Mouse, Cow, Dog, Guinea Pig, Horse, Rabbit, Zebrafish (Danio rerio)
Host:	Rabbit
Clonality:	Polyclonal
Conjugate:	This PDHB antibody is un-conjugated
Application:	Western Blotting (WB), Immunohistochemistry (IHC)

## Product Details

Immunogen:	The immunogen is a synthetic peptide directed towards the N terminal region of human PDHB
Sequence:	GLWKYGDGR IIDTPISEMG FAGIAVGAAM AGLRPICEFM TFNFSMQAID
Predicted Reactivity:	Cow: 100%, Dog: 100%, Guinea Pig: 100%, Horse: 100%, Human: 100%, Mouse: 100%, Rabbit: 100%, Rat: 100%, Zebrafish: 93%
Characteristics:	This is a rabbit polyclonal antibody against PDHB. It was validated on Western Blot using a cell lysate as a positive control.
Purification:	Affinity Purified

## Target Details

Target:	PDHB
---------	------

## Target Details

Alternative Name:	PDHB ( <a href="#">PDHB Products</a> )
Background:	<p>The pyruvate dehydrogenase complex catalyzes the overall conversion of pyruvate to acetyl-CoA and CO<sub>2</sub>. It contains multiple copies of three enzymatic components: pyruvate dehydrogenase (E1), dihydrolipoamide acetyltransferase (E2) and lipoamide dehydrogenase (E3).</p> <p>Alias Symbols: DKFZp564K0164, PHE1B, PDHBD</p> <p>Protein Interaction Partner: HUWE1, SUMO2, SUMO3, STAU1, MDM2, RNF2, RRAGB, YWHAE, SNRPD1, PCYT2, EIF5, ADRB2, ITGB1, GNB2, FN1, FCER1A, MDC1, ECT2, PDHX, PDHA1, OGDH, RPSA, FBXO6, CAND1, CUL3, UBC, TSC22D1, RAP1B, PFDN1, GRB7, RCC1, CDKN1A, ANXA7, DYRK2, SRRM2, TRIM63, PDHA2, PDHB,</p> <p>Protein Size: 359</p>
Molecular Weight:	39 kDa
Gene ID:	5162
NCBI Accession:	<a href="#">NM_000925</a> , <a href="#">NP_000916</a>
UniProt:	<a href="#">P11177</a>
Pathways:	<a href="#">Warburg Effect</a>

## Application Details

Application Notes:	Optimal working dilutions should be determined experimentally by the investigator.
Comment:	Antigen size: 359 AA
Restrictions:	For Research Use only

## Handling

Format:	Liquid
Concentration:	Lot specific
Buffer:	Liquid. Purified antibody supplied in 1x PBS buffer with 0.09 % (w/v) sodium azide and 2 % sucrose.
Preservative:	Sodium azide
Precaution of Use:	This product contains Sodium azide: a POISONOUS AND HAZARDOUS SUBSTANCE which should be handled by trained staff only.

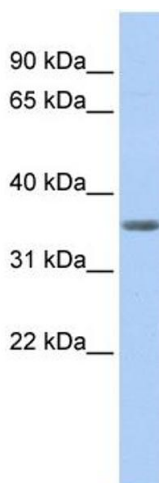
## Handling

Handling Advice: Avoid repeated freeze-thaw cycles.

Storage: -20 °C

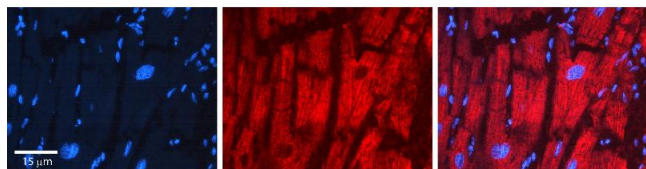
Storage Comment: For short term use, store at 2-8°C up to 1 week. For long term storage, store at -20°C in small aliquots to prevent freeze-thaw cycles.

## Images



### Western Blotting

**Image 1.** WB Suggested Anti-PDHB Antibody Titration: 0.2-1 ug/ml ELISA Titer: 1:312500 Positive Control: Human heart



### Immunohistochemistry

**Image 2.** Rabbit Anti-PDHB Antibody Formalin Fixed Paraffin Embedded Tissue: Human heart Tissue Observed Staining: Cytoplasmic Primary Antibody Concentration: 1:100 Other Working Concentrations: 1:600 Secondary Antibody: Donkey anti-Rabbit-Cy3 Secondary Antibody Concentration: 1:200 Magnification: 20X Exposure Time: 0.5 - 2.0 sec