

Datasheet for ABIN2783248  
**anti-PTGDS antibody (N-Term)**



[Go to Product page](#)

3 Images

## Overview

Quantity:	100 µL
Target:	PTGDS
Binding Specificity:	N-Term
Reactivity:	Human, Mouse, Rat, Rabbit, Dog, Horse, Guinea Pig
Host:	Rabbit
Clonality:	Polyclonal
Conjugate:	This PTGDS antibody is un-conjugated
Application:	Western Blotting (WB), Immunohistochemistry (IHC)

## Product Details

Immunogen:	The immunogen is a synthetic peptide directed towards the N terminal region of human PTGDS
Sequence:	MATHHTLWMG LALLGVLGDL QAAPEAQVSV QPNFQQDKFL GRWFSAGLAS
Predicted Reactivity:	Dog: 86%, Guinea Pig: 79%, Horse: 79%, Human: 100%, Mouse: 100%, Rabbit: 80%, Rat: 100%
Characteristics:	This is a rabbit polyclonal antibody against PTGDS. It was validated on Western Blot and immunohistochemistry.
Purification:	Affinity Purified

## Target Details

Target:	PTGDS
Alternative Name:	PTGDS ( <a href="#">PTGDS Products</a> )

## Target Details

---

**Background:** PTGDS is a glutathione-independent prostaglandin D synthase that catalyzes the conversion of prostaglandin H2 (PGH2) to prostaglandin D2 (PGD2). PGD2 functions as a neuromodulator as well as a trophic factor in the central nervous system. PGD2 is also involved in smooth muscle contraction/relaxation and is a potent inhibitor of platelet aggregation. The protein encoded by this gene is a glutathione-independent prostaglandin D synthase that catalyzes the conversion of prostaglandin H2 (PGH2) to prostaglandin D2 (PGD2). PGD2 functions as a neuromodulator as well as a trophic factor in the central nervous system. PGD2 is also involved in smooth muscle contraction/relaxation and is a potent inhibitor of platelet aggregation. This gene is preferentially expressed in brain. Studies with transgenic mice overexpressing this gene suggest that this gene may be also involved in the regulation of non-rapid eye movement sleep. Publication Note: This RefSeq record includes a subset of the publications that are available for this gene. Please see the Entrez Gene record to access additional publications.

Alias Symbols: PDS, PGD2, PGDS, PGDS2, LPGDS, L-PGDS

Protein Interaction Partner: PTGDR, HSP90AA1, KRTAP10-3, KRTAP10-7, Hk3, Hk2, ARRB2, ARR3, RARRES3, CAPN1, PTGDS, MLH1, BCAT2, ATXN1, SHBG, CACNA1A, EGFR, PTGFR, PTGER2, PTGER1,

Protein Size: 190

---

**Molecular Weight:** 21 kDa

---

**Gene ID:** 5730

---

**NCBI Accession:** [NM\\_000954, NP\\_000945](#)

---

**UniProt:** [P41222](#)

---

## Application Details

---

**Application Notes:** Optimal working dilutions should be determined experimentally by the investigator.

---

**Comment:** Antigen size: 190 AA

---

**Restrictions:** For Research Use only

---

## Handling

---

**Format:** Liquid

---

**Concentration:** Lot specific

---

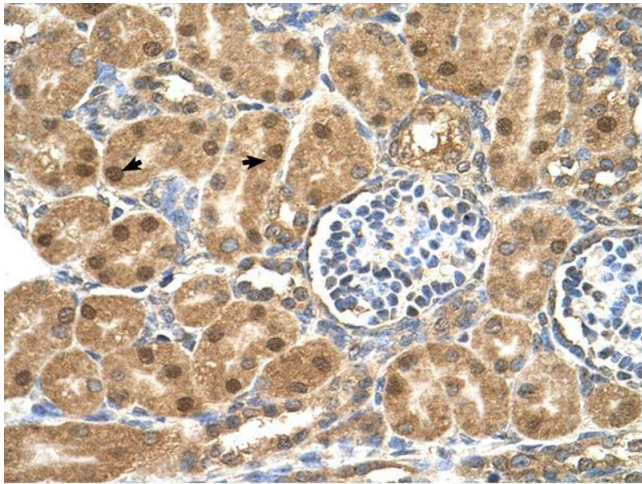
**Buffer:** Liquid. Purified antibody supplied in 1x PBS buffer with 0.09 % (w/v) sodium azide and 2 % sucrose.

---

## Handling

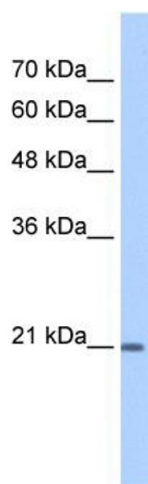
Preservative:	Sodium azide
Precaution of Use:	This product contains Sodium azide: a POISONOUS AND HAZARDOUS SUBSTANCE which should be handled by trained staff only.
Handling Advice:	Avoid repeated freeze-thaw cycles.
Storage:	-20 °C
Storage Comment:	For short term use, store at 2-8°C up to 1 week. For long term storage, store at -20°C in small aliquots to prevent freeze-thaw cycles.

## Images



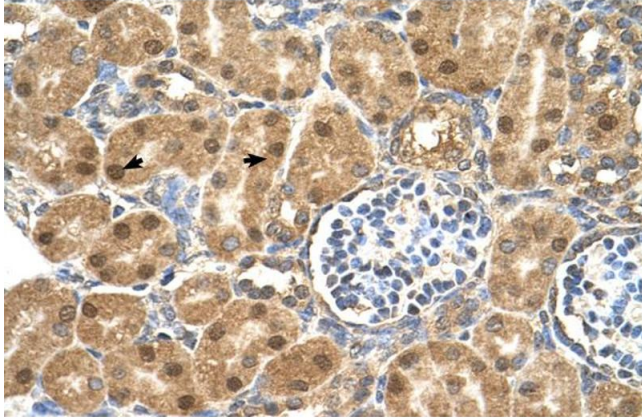
### Immunohistochemistry

**Image 1.**



### Western Blotting

**Image 2.** WB Suggested Anti-PTGDS Antibody Titration: 1 ug/ml Positive Control: HepG2 cell lysate



### Immunohistochemistry

**Image 3.** Human kidney