

Datasheet for ABIN2783251  
**anti-CNN1 antibody (N-Term)**



[Go to Product page](#)

2 Images

## Overview

Quantity:	100 µL
Target:	CNN1
Binding Specificity:	N-Term
Reactivity:	Human, Rat, Mouse, Pig, Sheep, Zebrafish (Danio rerio), Cow, Dog, Horse
Host:	Rabbit
Clonality:	Polyclonal
Conjugate:	This CNN1 antibody is un-conjugated
Application:	Western Blotting (WB)

## Product Details

Immunogen:	The immunogen is a synthetic peptide directed towards the N terminal region of human CNN1
Sequence:	MSSAHFNRGP AYGLSAEVKN KLAQKYDHQR EQELREWIEG VTGRRIGNNF
Predicted Reactivity:	Cow: 100%, Dog: 100%, Horse: 100%, Human: 100%, Mouse: 100%, Pig: 93%, Rat: 100%, Sheep: 100%, Zebrafish: 77%
Characteristics:	This is a rabbit polyclonal antibody against CNN1. It was validated on Western Blot using a cell lysate as a positive control.
Purification:	Affinity Purified

## Target Details

Target:	CNN1
---------	------

## Target Details

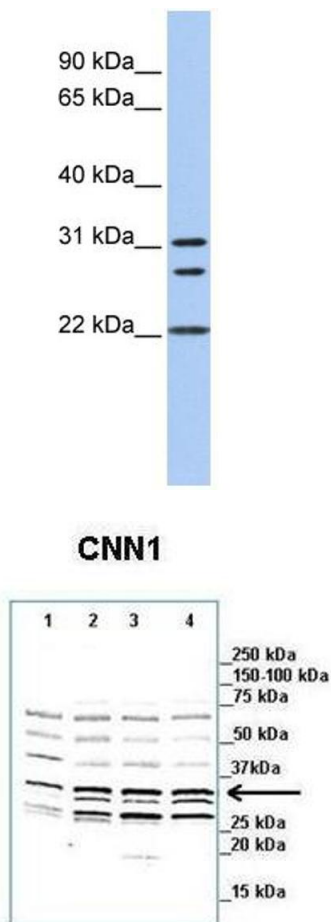
Alternative Name:	CNN1 ( <a href="#">CNN1 Products</a> )
Background:	<p>CNN1 is a thin filament-associated protein that is implicated in the regulation and modulation of smooth muscle contraction. It is capable of binding to actin, calmodulin, troponin C and tropomyosin. The interaction of calponin with actin inhibits the actomyosin Mg-ATPase activity.</p> <p>Alias Symbols: SMCC, Sm-Calp</p> <p>Protein Interaction Partner: ADRB2, TUBB, DNMBP, UBC, TPM1, TNNC1, CALM1, TPM3, PRKCE, FYN, ACTA1, MYO1A,</p> <p>Protein Size: 297</p>
Molecular Weight:	33 kDa
Gene ID:	1264
NCBI Accession:	<a href="#">NM_001299</a> , <a href="#">NP_001290</a>
UniProt:	<a href="#">P51911</a>

## Application Details

Application Notes:	Optimal working dilutions should be determined experimentally by the investigator.
Comment:	Antigen size: 297 AA
Restrictions:	For Research Use only

## Handling

Format:	Liquid
Concentration:	Lot specific
Buffer:	Liquid. Purified antibody supplied in 1x PBS buffer with 0.09 % (w/v) sodium azide and 2 % sucrose.
Preservative:	Sodium azide
Precaution of Use:	This product contains Sodium azide: a POISONOUS AND HAZARDOUS SUBSTANCE which should be handled by trained staff only.
Handling Advice:	Avoid repeated freeze-thaw cycles.
Storage:	-20 °C
Storage Comment:	For short term use, store at 2-8°C up to 1 week. For long term storage, store at -20°C in small aliquots to prevent freeze-thaw cycles.



See Immunoblot 2 Data and Customer Feedback for more information

Western Blotting

**Image 1.** WB Suggested Anti-CNN1 Antibody Titration: 0.2-1 ug/ml ELISA Titer: 1:1562500 Positive Control: Hela cell lysate

Western Blotting

**Image 2.** Lanes: 1. 20 ug murine non-pregnant uteria tissue 2. 20 ug murine non-laboring uterine tissue 3. 20 ug murine laboring uterine tissue 4. 20 ug murine preterm laboring uterine tissue Primary Antibody Dilution: 1:2000 Secondary Antibody: Goat anti-rabbit-Alexa Fluor 680 Secondary Antibody Dilution: 1:25,000 Gene Name: CNN1 Submitted by: Anonymous