

Datasheet for ABIN2783254
anti-eEF1A1 antibody (C-Term)

4 Images

1 Publication

[Go to Product page](#)

Overview

Quantity:	100 µL
Target:	eEF1A1 (EEF1A1)
Binding Specificity:	C-Term
Reactivity:	Human, Mouse, Rat, Cow, Rabbit, Dog, Sheep, Goat, Guinea Pig, Horse
Host:	Rabbit
Clonality:	Polyclonal
Conjugate:	This eEF1A1 antibody is un-conjugated
Application:	Western Blotting (WB)

Product Details

Immunogen:	The immunogen is a synthetic peptide directed towards the C terminal region of human EEF1A1
Sequence:	IVDMVPGKPM CVESFSDYPP LGRFAVRDMR QTVAVGVKA VDKKAAGAGK
Predicted Reactivity:	Cow: 100%, Dog: 100%, Goat: 100%, Guinea Pig: 100%, Horse: 100%, Human: 100%, Mouse: 100%, Rabbit: 100%, Rat: 100%, Sheep: 100%
Characteristics:	This is a rabbit polyclonal antibody against EEF1A1. It was validated on Western Blot using a cell lysate as a positive control.
Purification:	Protein A purified

Target Details

Target:	eEF1A1 (EEF1A1)
---------	-----------------

Target Details

Alternative Name: EE1A1 ([EE1A1 Products](#))

Background: EE1A1 is an isoform of the alpha subunit of the elongation factor-1 complex, which is responsible for the enzymatic delivery of aminoacyl tRNAs to the ribosome. This isoform (alpha 1) is expressed in brain, placenta, lung, liver, kidney, and pancreas, and the other isoform (alpha 2) is expressed in brain, heart and skeletal muscle. This isoform is identified as an autoantigen in 66 % of patients with Felty syndrome. This gene encodes an isoform of the alpha subunit of the elongation factor-1 complex, which is responsible for the enzymatic delivery of aminoacyl tRNAs to the ribosome. This isoform (alpha 1) is expressed in brain, placenta, lung, liver, kidney, and pancreas, and the other isoform (alpha 2) is expressed in brain, heart and skeletal muscle. This isoform is identified as an autoantigen in 66 % of patients with Felty syndrome. This gene has been found to have multiple copies on many chromosomes, some of which, if not all, represent different pseudogenes. Publication Note: This RefSeq record includes a subset of the publications that are available for this gene. Please see the Entrez Gene record to access additional publications.

Alias Symbols: CCS-3, CCS3, EE1-1, EE1A, EF-Tu, EF1A, FLJ25721, GRAF-1EF, HNGC:16303, LENG7, MGC102687, MGC131894, MGC16224, PTI1, eEF1A-1, EE1A1

Protein Interaction Partner: GPX7, FUS, UBC, ISG15, SUMO3, CEP250, TUBGCP2, TUBG1, TP53, AURKA, SUMO2, STAU1, ALPL, LGR4, MDM2, RPA3, RPA2, RPA1, SHFM1, rev, PPP1CB, PFKP, GAPDH, PARK2, TRAP1, FBXO6, EGFR, ADRB2, RAD52, NPM1, CD81, BBS4, BBS2, BBS1, AICDA, STAT6, RBBP8, FN1, CDC25A,

Protein Size: 462

Molecular Weight: 50 kDa

Gene ID: 1915

NCBI Accession: [NM_001402](#), [NP_001393](#)

UniProt: [P68104](#)

Application Details

Application Notes: Optimal working dilutions should be determined experimentally by the investigator.

Comment: Antigen size: 462 AA

Restrictions: For Research Use only

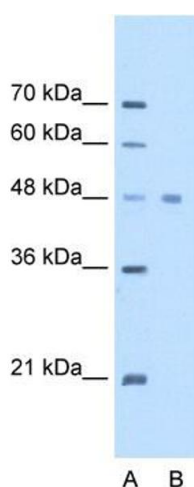
Handling

Format:	Liquid
Concentration:	Lot specific
Buffer:	Liquid. Purified antibody supplied in 1x PBS buffer with 0.09 % (w/v) sodium azide and 2 % sucrose.
Preservative:	Sodium azide
Precaution of Use:	This product contains Sodium azide: a POISONOUS AND HAZARDOUS SUBSTANCE which should be handled by trained staff only.
Handling Advice:	Avoid repeated freeze-thaw cycles.
Storage:	-20 °C
Storage Comment:	For short term use, store at 2-8°C up to 1 week. For long term storage, store at -20°C in small aliquots to prevent freeze-thaw cycles.

Publications

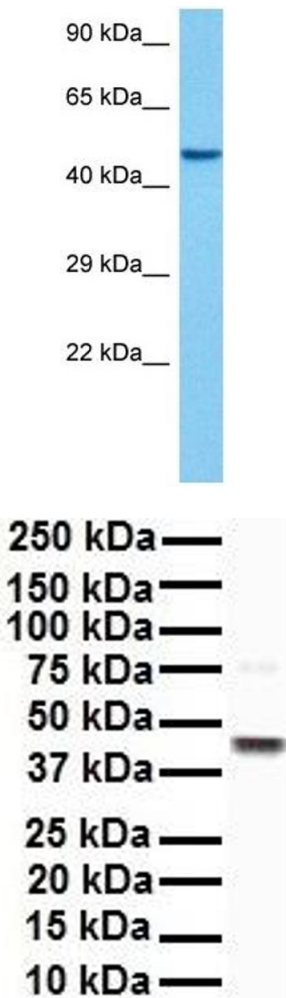
Product cited in:	Ewing, Chu, Elisma, Li, Taylor, Climie, McBroom-Cerajewski, Robinson, OConnor, Li, Taylor, Dharsee, Ho, Heilbut, Moore, Zhang, Ornatsky, Bukhman, Ethier, Sheng, Vasilescu, Abu-Farha, Lambert, Duewel et al.: "Large-scale mapping of human protein-protein interactions by mass spectrometry. ..." in: Molecular systems biology , Vol. 3, pp. 89, (2007) (PubMed).
-------------------	--

Images



Western Blotting

Image 1. WB Suggested Anti-EEF1A1 Antibody Titration: 2.5ug/ml Positive Control: HepG2 cell lysate EEF1A1 is strongly supported by BioGPS gene expression data to be expressed in Human HepG2 cells



Western Blotting

Image 2. Host: Mouse Target Name: EEF1A1 Sample Tissue: Mouse Pancreas Antibody Dilution: 1ug/ml

Western Blotting

Image 3. WB Suggested Anti-EEF1A1 antibody Titration: 1 ug/mL Sample Type: Human HepG2

Please check the [product details page](#) for more images. Overall 4 images are available for ABIN2783254.