

Datasheet for ABIN2783259  
**anti-EIF3E antibody (N-Term)**[Go to Product page](#)

## 3 Images

## Overview

Quantity:	100 µL
Target:	EIF3E
Binding Specificity:	N-Term
Reactivity:	Human, Mouse, Rat, Cow, Dog, Zebrafish (Danio rerio), Horse, Rabbit, Guinea Pig
Host:	Rabbit
Clonality:	Polyclonal
Conjugate:	This EIF3E antibody is un-conjugated
Application:	Western Blotting (WB), Immunohistochemistry (IHC)

## Product Details

Immunogen:	The immunogen is a synthetic peptide directed towards the N terminal region of human EIF3E
Sequence:	ELLQGKLDLL SDTNMVDFAM DVYKNLYSDD IPHALREKRT TVVAQLKQLQ
Predicted Reactivity:	Cow: 100%, Dog: 100%, Guinea Pig: 100%, Horse: 100%, Human: 100%, Mouse: 100%, Rabbit: 100%, Rat: 100%, Zebrafish: 75%
Characteristics:	This is a rabbit polyclonal antibody against EIF3E. It was validated on Western Blot using a cell lysate as a positive control.
Purification:	Affinity Purified

## Target Details

Target:	EIF3E
---------	-------

## Target Details

Alternative Name:	EIF3E ( <a href="#">EIF3E Products</a> )
Background:	<p>EIF3E belongs to the eIF-3 subunit E family. It is a component of the eukaryotic translation initiation factor 3 (eIF-3) complex, which is required for several steps in the initiation of protein synthesis. EIF3E is required for nonsense-mediated mRNA decay (NMD). It may act in conjunction with UPF2 to divert mRNAs from translation to the NMD pathway. The protein may interact with MCM7 and EPAS1 and regulate the proteasome-mediated degradation of these proteins.</p> <p>Alias Symbols: EIF3-P48, EIF3S6, INT6, eIF3-p46</p> <p>Protein Interaction Partner: UBC, C4orf19, RUNDC3A, HUWE1, TRIM63, TRIM55, STAU1, SUMO1, NEDD8, GPRASP2, LARP1, GNB2L1, RPS28, RPS25, RPS23, RPS20, RPS19, RPS18, RPS12, RPS10, RPS9, RPS8, RPS3A, RPS3, RPS2, EIF3CL, DYNC1LI1, FBXO6, EIF3D, IGSF8, NPM1, ICAM1, CD81, EIF3B, VCAM1, POLR2</p> <p>Protein Size: 445</p>
Molecular Weight:	52 kDa
Gene ID:	3646
NCBI Accession:	<a href="#">NM_001568</a> , <a href="#">NP_001559</a>
UniProt:	<a href="#">P60228</a>
Pathways:	<a href="#">Ribonucleoprotein Complex Subunit Organization</a> , <a href="#">Hepatitis C</a>

## Application Details

Application Notes:	Optimal working dilutions should be determined experimentally by the investigator.
Comment:	Antigen size: 445 AA
Restrictions:	For Research Use only

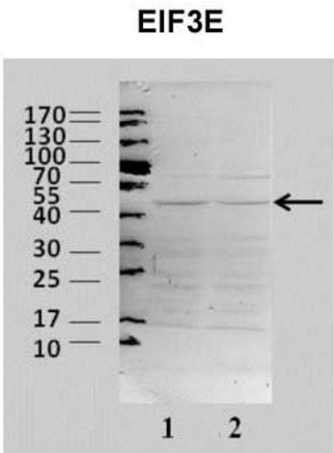
## Handling

Format:	Liquid
Concentration:	Lot specific
Buffer:	Liquid. Purified antibody supplied in 1x PBS buffer with 0.09 % (w/v) sodium azide and 2 % sucrose.
Preservative:	Sodium azide
Precaution of Use:	This product contains Sodium azide: a POISONOUS AND HAZARDOUS SUBSTANCE which

Handling

	should be handled by trained staff only.
Handling Advice:	Avoid repeated freeze-thaw cycles.
Storage:	-20 °C
Storage Comment:	For short term use, store at 2-8°C up to 1 week. For long term storage, store at -20°C in small aliquots to prevent freeze-thaw cycles.

Images



See Immunoblot 2 Data and Customer Feedback tab for more information.

Western Blotting

**Image 1. Sample Type:** 2. B8 mouse fibroblast cells, extraction only

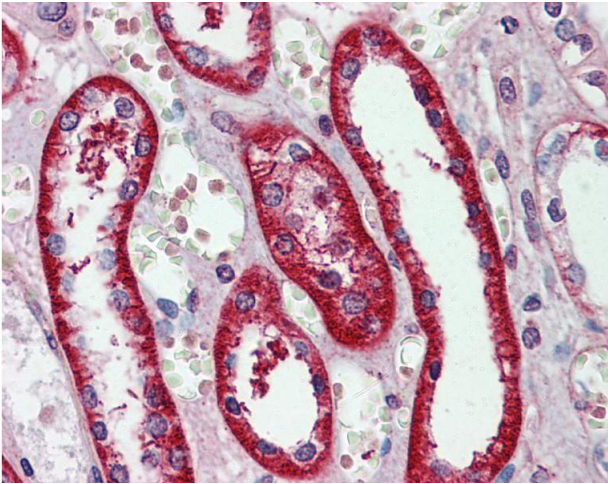
3. Human total cell extract, crude

**Primary Dilution:** 1:1000

**Secondary Anitbody:** HRP conjugated anti-rabbit

**Image Submitted By:** Dr. Elah Pick

University of Haifa at Oranim



Immunohistochemistry

**Image 2.**



**Western Blotting**

**Image 3.** WB Suggested Anti-EIF3E Antibody Titration: 0.2-1 ug/ml ELISA Titer: 1:312500 Positive Control: 293T cell lysate EIF3E is supported by BioGPS gene expression data to be expressed in HEK293T