

Datasheet for ABIN2783262
anti-AKR1B1 antibody (N-Term)



[Go to Product page](#)

3 Images

Overview

Quantity:	100 µL
Target:	AKR1B1
Binding Specificity:	N-Term
Reactivity:	Human, Rat, Mouse, Dog, Rabbit, Cow, Guinea Pig, Horse, Zebrafish (Danio rerio), Saccharomyces cerevisiae
Host:	Rabbit
Clonality:	Polyclonal
Conjugate:	This AKR1B1 antibody is un-conjugated
Application:	Western Blotting (WB), Immunohistochemistry (IHC)

Product Details

Immunogen:	The immunogen is a synthetic peptide directed towards the N terminal region of human AKR1B1
Sequence:	ASRLLLNGA KMPILGLGTW KSPPGQVTEA VKVAIDVGYR HIDCAHVYQN
Predicted Reactivity:	Cow: 93%, Dog: 86%, Guinea Pig: 100%, Horse: 100%, Human: 100%, Mouse: 100%, Rabbit: 93%, Rat: 100%, Yeast: 86%, Zebrafish: 91%
Characteristics:	This is a rabbit polyclonal antibody against AKR1B1. It was validated on Western Blot using a cell lysate as a positive control.
Purification:	Affinity Purified

Target Details

Target:	AKR1B1
Alternative Name:	AKR1B1 (AKR1B1 Products)
Background:	<p>AKR1B1 is a member of the aldo/keto reductase superfamily, which consists of more than 40 known enzymes and proteins. This member catalyzes the reduction of a number of aldehydes, including the aldehyde form of glucose, and is thereby implicated in the development of diabetic complications by catalyzing the reduction of glucose to sorbitol. This gene encodes a member of the aldo/keto reductase superfamily, which consists of more than 40 known enzymes and proteins. This member catalyzes the reduction of a number of aldehydes, including the aldehyde form of glucose, and is thereby implicated in the development of diabetic complications by catalyzing the reduction of glucose to sorbitol. There are a few putative pseudogenes for this gene, and one of them has been confirmed and mapped to chromosome 3. Publication Note: This RefSeq record includes a subset of the publications that are available for this gene. Please see the Entrez Gene record to access additional publications.</p> <p>Alias Symbols: ADR, ALDR1, ALR2, AR, MGC1804</p> <p>Protein Interaction Partner: UBC, ASB18, ASB9, ASB5, SMAD1, SORD, SHBG, TFE3,</p> <p>Protein Size: 316</p>
Molecular Weight:	36 kDa
Gene ID:	231
NCBI Accession:	NM_001628 , NP_001619
UniProt:	P15121
Pathways:	Metabolism of Steroid Hormones and Vitamin D , C21-Steroid Hormone Metabolic Process , Monocarboxylic Acid Catabolic Process

Application Details

Application Notes:	Optimal working dilutions should be determined experimentally by the investigator.
Comment:	Antigen size: 316 AA
Restrictions:	For Research Use only

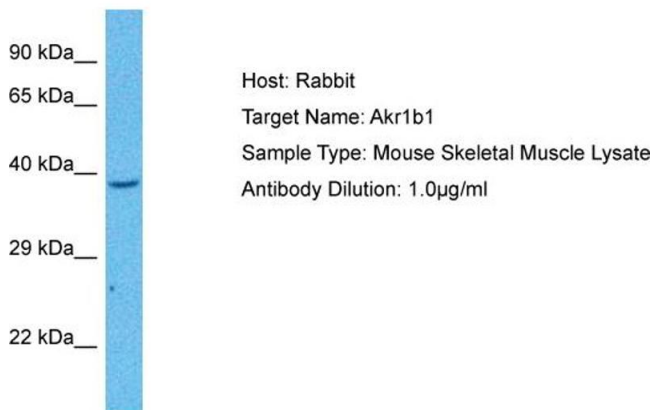
Handling

Format:	Liquid
Concentration:	Lot specific

Handling

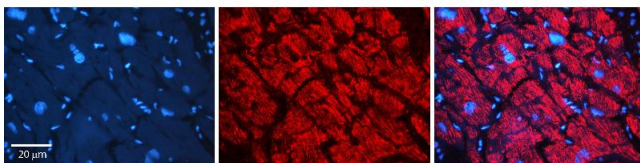
Buffer:	Liquid. Purified antibody supplied in 1x PBS buffer with 0.09 % (w/v) sodium azide and 2 % sucrose.
Preservative:	Sodium azide
Precaution of Use:	This product contains Sodium azide: a POISONOUS AND HAZARDOUS SUBSTANCE which should be handled by trained staff only.
Handling Advice:	Avoid repeated freeze-thaw cycles.
Storage:	-20 °C
Storage Comment:	For short term use, store at 2-8°C up to 1 week. For long term storage, store at -20°C in small aliquots to prevent freeze-thaw cycles.

Images



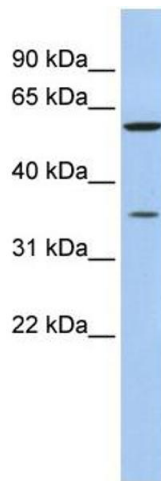
Western Blotting

Image 1. Host: Mouse Target Name: AKR1B1 Sample Tissue: Mouse Skeletal Muscle Antibody Dilution: 1ug/ml



Immunohistochemistry

Image 2. Rabbit Anti-AKR1B1 Antibody Catalog Number: ARP48179_P050 Formalin Fixed Paraffin Embedded Tissue: Human heart Tissue Observed Staining: Cytoplasmic Primary Antibody Concentration: N/A Other Working Concentrations: 1:600 Secondary Antibody: Donkey anti-Rabbit-Cy3 Secondary Antibody Concentration: 1:200 Magnification: 20X Exposure Time: 0.5 - 2.0 sec



Western Blotting

Image 3. WB Suggested Anti-AKR1B1 Antibody Titration:
0.2-1 ug/ml ELISA Titer: 1:312500 Positive Control: MCF7
cell lysate