

Datasheet for ABIN2783277  
**anti-EEF1A2 antibody (Middle Region)**[Go to Product page](#)

## 4 Images

## Overview

Quantity:	100 µL
Target:	EEF1A2
Binding Specificity:	Middle Region
Reactivity:	Human, Mouse, Rat, Cow, Rabbit, Guinea Pig, Horse, Zebrafish (Danio rerio)
Host:	Rabbit
Clonality:	Polyclonal
Conjugate:	This EEF1A2 antibody is un-conjugated
Application:	Western Blotting (WB)

## Product Details

Immunogen:	The immunogen is a synthetic peptide directed towards the middle region of human EEF1A2
Sequence:	VIDCHTAHIA CKFAELKEKI DRRSGKKLED NPKSLKSGDA AIVEMVPGKP
Predicted Reactivity:	Cow: 100%, Guinea Pig: 100%, Horse: 100%, Human: 100%, Mouse: 100%, Rabbit: 100%, Rat: 100%, Zebrafish: 100%
Characteristics:	This is a rabbit polyclonal antibody against EEF1A2. It was validated on Western Blot using a cell lysate as a positive control.
Purification:	Affinity Purified

## Target Details

Target:	EEF1A2
---------	--------

## Target Details

Alternative Name: [EEF1A2 \(EEF1A2 Products\)](#)

Background: EEF1A2 is an isoform of the alpha subunit of the elongation factor-1 complex, which is responsible for the enzymatic delivery of aminoacyl tRNAs to the ribosome. This isoform (alpha 2) is expressed in brain, heart and skeletal muscle, and the other isoform (alpha 1) is expressed in brain, placenta, lung, liver, kidney, and pancreas. This gene may be critical in the development of ovarian cancer. Alternatively spliced transcript variants encoding different isoforms have been found for this gene. This gene encodes an isoform of the alpha subunit of the elongation factor-1 complex, which is responsible for the enzymatic delivery of aminoacyl tRNAs to the ribosome. This isoform (alpha 2) is expressed in brain, heart and skeletal muscle, and the other isoform (alpha 1) is expressed in brain, placenta, lung, liver, kidney, and pancreas. This gene may be critical in the development of ovarian cancer. Publication Note: This RefSeq record includes a subset of the publications that are available for this gene. Please see the Entrez Gene record to access additional publications.

Alias Symbols: EEF1AL, EF-1-alpha-2, EF1A, HS1, STN, STNL

Protein Interaction Partner: ABTB1, CEP57, VCP, TUBG1, AURKA, SUMO2, CEP76, HAUS2, UBC, LGR4, TRIM25, RPA3, RPA2, RPA1, ERG, SHFM1, AHCY, PARK2, CDK3, IGSF8, CD81, US3, BTK, YWHAE, TTLL12, UBXN6, CAND1, DCUN1D1, COPS5, COPS6, CUL1, CUL2, CUL3, CUL4A, CUL4B, CUL5, NFX1, NEDD8, ISG15,

Protein Size: 463

Molecular Weight: 50 kDa

Gene ID: 1917

NCBI Accession: [NM\\_001958](#), [NP\\_001949](#)

UniProt: [Q05639](#)

## Application Details

Application Notes: Optimal working dilutions should be determined experimentally by the investigator.

Comment: Antigen size: 463 AA

Restrictions: For Research Use only

## Handling

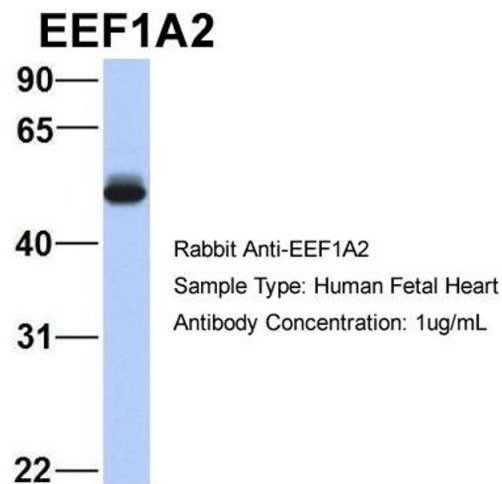
Format: Liquid

Concentration: Lot specific

## Handling

Buffer:	Liquid. Purified antibody supplied in 1x PBS buffer with 0.09 % (w/v) sodium azide and 2 % sucrose.
Preservative:	Sodium azide
Precaution of Use:	This product contains Sodium azide: a POISONOUS AND HAZARDOUS SUBSTANCE which should be handled by trained staff only.
Handling Advice:	Avoid repeated freeze-thaw cycles.
Storage:	-20 °C
Storage Comment:	For short term use, store at 2-8°C up to 1 week. For long term storage, store at -20°C in small aliquots to prevent freeze-thaw cycles.

## Images



### Western Blotting

**Image 1.** Host: Rabbit Target Name: EEF1A2 Sample Type: Human Fetal Heart Antibody Dilution: 1.0ug/ml



### Western Blotting

**Image 2.** WB Suggested Anti-EEF1A2 antibody Titration: 1 ug/mL Sample Type: Human HepG2



**Western Blotting**

**Image 3.** WB Suggested Anti-EEF1A2 Antibody Titration:  
0.2-1 ug/ml ELISA Titer: 1:12500 Positive Control: Human  
brain

Please check the [product details page](#) for more images. Overall 4 images are available for ABIN2783277.