

Datasheet for ABIN2783280  
**anti-GOT1 antibody (N-Term)**

5 Images

3 Publications

[Go to Product page](#)

## Overview

Quantity:	100 µL
Target:	GOT1
Binding Specificity:	N-Term
Reactivity:	Human, Mouse, Rat, Cow, Zebrafish (Danio rerio), Horse, Rabbit, Goat, Guinea Pig, Saccharomyces cerevisiae
Host:	Rabbit
Clonality:	Polyclonal
Conjugate:	This GOT1 antibody is un-conjugated
Application:	Western Blotting (WB), Immunohistochemistry (IHC)

## Product Details

Immunogen:	The immunogen is a synthetic peptide directed towards the N terminal region of human GOT1
Sequence:	MAPPSVFAEV PQAQPVLVFK LTADFREDPD PRKVN LGVGA YRTDDCHPWV
Predicted Reactivity:	Cow: 100%, Goat: 100%, Guinea Pig: 100%, Horse: 100%, Human: 100%, Mouse: 100%, Rabbit: 100%, Rat: 100%, Yeast: 92%, Zebrafish: 85%
Characteristics:	This is a rabbit polyclonal antibody against GOT1. It was validated on Western Blot using a cell lysate as a positive control.
Purification:	Affinity Purified

## Target Details

Target:	GOT1
---------	------

## Target Details

Alternative Name:	GOT1 ( <a href="#">GOT1 Products</a> )
Background:	<p>Glutamic-oxaloacetic transaminase is a pyridoxal phosphate-dependent enzyme which exists in cytoplasmic and mitochondrial forms, GOT1 and GOT2, respectively. GOT plays a role in amino acid metabolism and the urea and tricarboxylic acid cycles. The two enz</p> <p>Alias Symbols: GIG18, ASTQTL1</p> <p>Protein Interaction Partner: UBC, CHRA1, SBDS, UBE2H, TYMS, MTAP, IDH1, HPRT1, ANXA6, ABI3BP, EGFR, TMEM120A, PC,</p> <p>Protein Size: 413</p>
Molecular Weight:	46 kDa
Gene ID:	2805
NCBI Accession:	<a href="#">NM_002079</a> , <a href="#">NP_002070</a>
UniProt:	<a href="#">P17174</a>
Pathways:	<a href="#">Hepatitis C</a> , <a href="#">Monocarboxylic Acid Catabolic Process</a> , <a href="#">Methionine Biosynthetic Process</a>

## Application Details

Application Notes:	Optimal working dilutions should be determined experimentally by the investigator.
Comment:	Antigen size: 413 AA
Restrictions:	For Research Use only

## Handling

Format:	Liquid
Concentration:	Lot specific
Buffer:	Liquid. Purified antibody supplied in 1x PBS buffer with 0.09 % (w/v) sodium azide and 2 % sucrose.
Preservative:	Sodium azide
Precaution of Use:	This product contains Sodium azide: a POISONOUS AND HAZARDOUS SUBSTANCE which should be handled by trained staff only.
Handling Advice:	Avoid repeated freeze-thaw cycles.
Storage:	-20 °C
Storage Comment:	For short term use, store at 2-8°C up to 1 week. For long term storage, store at -20°C in small

aliquots to prevent freeze-thaw cycles.

Publications

Product cited in: Ewing, Chu, Elisma, Li, Taylor, Climie, McBroom-Cerajewski, Robinson, OConnor, Li, Taylor, Dharsee, Ho, Heilbut, Moore, Zhang, Ornatsky, Bukhman, Ethier, Sheng, Vasilescu, Abu-Farha, Lambert, Duewel et al.: "Large-scale mapping of human protein-protein interactions by mass spectrometry. ..." in: **Molecular systems biology**, Vol. 3, pp. 89, (2007) ([PubMed](#)).

Images

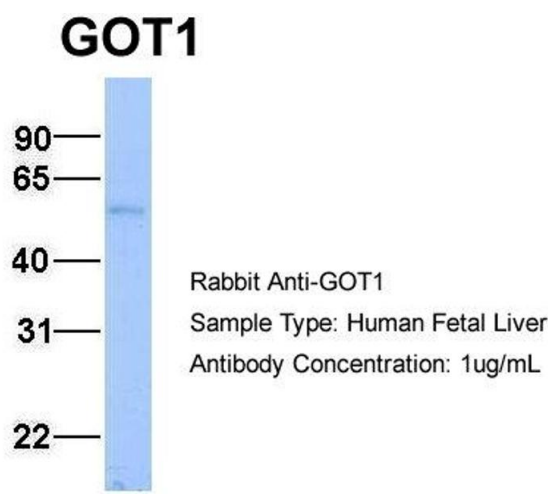


Western Blotting

**Image 1.** WB Suggested Anti-GOT1 Antibody Titration: 1 ug/ml Positive Control: NCI-H226 Whole Cell GOT1 is supported by BioGPS gene expression data to be expressed in NCIH226

Western Blotting

**Image 2.** WB Suggested Anti-GOT1 Antibody Titration: 1 µg/mL Positive Control: NCI-H226 Whole Cell GOT1 is supported by BioGPS gene expression data to be expressed in NCIH226



Western Blotting

**Image 3.** Host: Rabbit Target Name: GOT1 Sample Type:  
Human Fetal Liver Antibody Dilution: 1.0ug/ml

Please check the [product details page](#) for more images. Overall 5 images are available for ABIN2783280.