

Datasheet for ABIN2783283
anti-LDHB antibody (C-Term)



[Go to Product page](#)

11 Images

Overview

Quantity:	100 µL
Target:	LDHB
Binding Specificity:	C-Term
Reactivity:	Human, Rat, Mouse, Cow, Horse, Rabbit, Dog, Zebrafish (Danio rerio), Guinea Pig
Host:	Rabbit
Clonality:	Polyclonal
Conjugate:	This LDHB antibody is un-conjugated
Application:	Western Blotting (WB), Immunohistochemistry (IHC)

Product Details

Immunogen:	The immunogen is a synthetic peptide directed towards the C-terminal region of Human LDHB
Sequence:	MYGIENEVFL SLPCILNARG LTSVINQKLK DDEVAQLKKS ADTLWDIQKD
Predicted Reactivity:	Cow: 93%, Dog: 100%, Guinea Pig: 93%, Horse: 93%, Human: 100%, Mouse: 100%, Rabbit: 100%, Rat: 93%, Zebrafish: 91%
Characteristics:	This is a rabbit polyclonal antibody against LDHB. It was validated on Western Blot.
Purification:	Affinity Purified

Target Details

Target:	LDHB
Alternative Name:	LDHB (LDHB Products)

Target Details

Background:	<p>LDHB belongs to the LDH/MDH superfamily, LDH family. Defects in LDHB are a cause of hereditary LDHB deficiency. LDHB may also have roles in progression of medulloblastoma.</p> <p>Alias Symbols: LDH-H, TRG-5, LDH-B, LDHBD</p> <p>Protein Interaction Partner: UBC, PEX5, LDHB, LDHA, FUS, HUWE1, SUMO2, SUMO3, STAU1, SUZ12, RNF2, GINS4, TXNDC5, FTO, UBFD1, CNDP2, YWHAQ, BZW1, NPEPPS, SLC9A3R1, YWHAZ, YWHAG, ALDH7A1, YWHAB, UBE2V1, TGM2, RPS6KA1, PGD, PFAS, PAK2, PAFAH1B3, PAFAH1B2, HNRNPAB, HNRNPA2B1, HMGB2, GNAI</p> <p>Protein Size: 334</p>
Molecular Weight:	37 kDa
Gene ID:	3945
NCBI Accession:	NM_002300 , NP_002291
UniProt:	P07195
Pathways:	Warburg Effect

Application Details

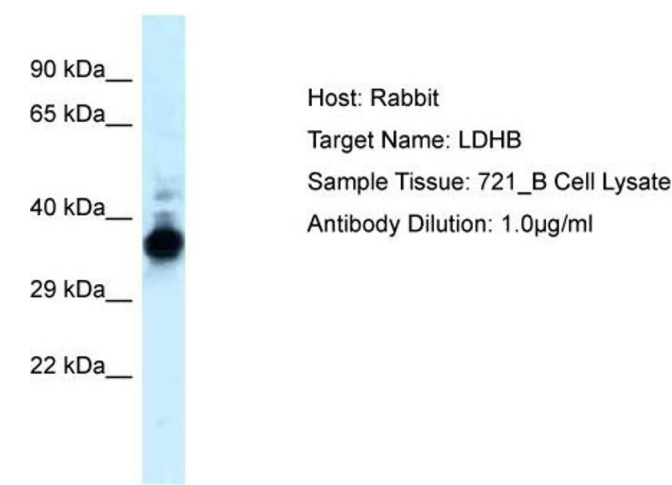
Application Notes:	Optimal working dilutions should be determined experimentally by the investigator.
Comment:	Antigen size: 334 AA
Restrictions:	For Research Use only

Handling

Format:	Liquid
Concentration:	Lot specific
Buffer:	Liquid. Purified antibody supplied in 1x PBS buffer with 0.09 % (w/v) sodium azide and 2 % sucrose.
Preservative:	Sodium azide
Precaution of Use:	This product contains Sodium azide: a POISONOUS AND HAZARDOUS SUBSTANCE which should be handled by trained staff only.
Handling Advice:	Avoid repeated freeze-thaw cycles.
Storage:	-20 °C
Storage Comment:	For short term use, store at 2-8°C up to 1 week. For long term storage, store at -20°C in small

aliquots to prevent freeze-thaw cycles.

Images



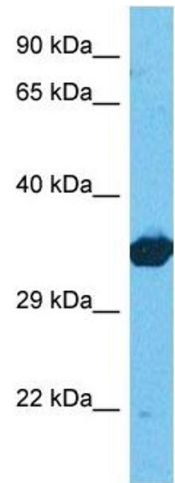
Western Blotting

Image 1. WB Suggested Anti-LDHB Antibody Titration: 1 ug/ml Positive Control: 721_B Whole Cell LDHB is strongly supported by BioGPS gene expression data to be expressed in Human 721_B cells



Western Blotting

Image 2. WB Suggested Anti-LDHB antibody Titration: 1 ug/mL Sample Type: Human 721_B



Western Blotting

Image 3. Host: Rabbit Target Name: LDHB Sample Tissue: Human 293T Whole Cell Antibody Dilution: 1ug/ml

Please check the [product details page](#) for more images. Overall 11 images are available for ABIN2783283.