

Datasheet for ABIN2783286  
**anti-SH3BGRL antibody (Middle Region)**[Go to Product page](#)

## 2 Images

## Overview

Quantity:	100 µL
Target:	SH3BGRL
Binding Specificity:	Middle Region
Reactivity:	Human, Mouse, Rat, Cow, Horse, Rabbit, Zebrafish (Danio rerio), Dog, Pig
Host:	Rabbit
Clonality:	Polyclonal
Conjugate:	This SH3BGRL antibody is un-conjugated
Application:	Western Blotting (WB), Immunohistochemistry (IHC)

## Product Details

Immunogen:	The immunogen is a synthetic peptide directed towards the middle region of human SH3BGRL
Sequence:	PQIFNESQYR GDYDAFFEAR ENNAVYAFLG LTAPPGSKEA EVQAKQQA
Predicted Reactivity:	Cow: 100%, Dog: 100%, Horse: 100%, Human: 100%, Mouse: 100%, Pig: 100%, Rabbit: 100%, Rat: 100%, Zebrafish: 100%
Characteristics:	This is a rabbit polyclonal antibody against SH3BGRL. It was validated on Western Blot using a cell lysate as a positive control.
Purification:	Affinity Purified

## Target Details

Target:	SH3BGRL
---------	---------

## Target Details

Alternative Name:	SH3BGRL ( <a href="#">SH3BGRL Products</a> )
Background:	<p>SH3BGRL belongs to the SH3BGR family. Mutations in predicted EVH1-binding domain of SH3BGRL had a modest effect on suppression of v-Rel transformation.</p> <p>Alias Symbols: MGC117402, SH3BGR</p> <p>Protein Interaction Partner: SCAF4, LXN, NSFL1C, SDHAF2, CD2BP2, STUB1, STAT6, SNRPF, PSMA5, PSMA1, IGBP1, UBC, ERBB2, EGFR,</p> <p>Protein Size: 114</p>
Molecular Weight:	13 kDa
Gene ID:	6451
NCBI Accession:	<a href="#">NM_003022</a> , <a href="#">NP_003013</a>
UniProt:	<a href="#">O75368</a>

## Application Details

Application Notes:	Optimal working dilutions should be determined experimentally by the investigator.
Comment:	Antigen size: 114 AA
Restrictions:	For Research Use only

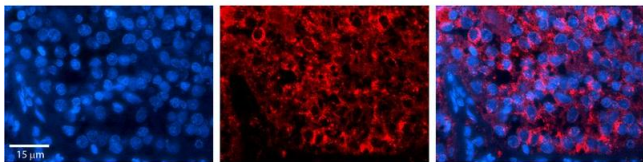
## Handling

Format:	Liquid
Concentration:	Lot specific
Buffer:	Liquid. Purified antibody supplied in 1x PBS buffer with 0.09 % (w/v) sodium azide and 2 % sucrose.
Preservative:	Sodium azide
Precaution of Use:	This product contains Sodium azide: a POISONOUS AND HAZARDOUS SUBSTANCE which should be handled by trained staff only.
Handling Advice:	Avoid repeated freeze-thaw cycles.
Storage:	-20 °C
Storage Comment:	For short term use, store at 2-8°C up to 1 week. For long term storage, store at -20°C in small aliquots to prevent freeze-thaw cycles.



### Western Blotting

**Image 1.** WB Suggested Anti-SH3BGRL Antibody Titration: 0.2-1 ug/ml Positive Control: MCF7 cell lysate SH3BGRL is strongly supported by BioGPS gene expression data to be expressed in Human MCF7 cells



### Immunohistochemistry

**Image 2.** Rabbit Anti-SH3BGRL Antibody Formalin Fixed Paraffin Embedded Tissue: Human Pineal Tissue Observed Staining: Cytoplasmic in cell bodies of pinealocytes Primary Antibody Concentration: 1:100 Other Working Concentrations: 1/600 Secondary Antibody: Donkey anti-Rabbit-Cy3 Secondary Antibody Concentration: 1:200 Magnification: 20X Exposure Time: 0.5 - 2.0 sec