



[Go to Product page](#)

Datasheet for ABIN2783288

## anti-TPM2 antibody (C-Term)

3 Images

2 Publications

### Overview

Quantity:	100 µL
Target:	TPM2
Binding Specificity:	C-Term
Reactivity:	Human, Mouse, Rat, Cow, Dog, Rabbit, Zebrafish (Danio rerio), Guinea Pig, Horse, Pig, Sheep
Host:	Rabbit
Clonality:	Polyclonal
Conjugate:	This TPM2 antibody is un-conjugated
Application:	Western Blotting (WB), Immunohistochemistry (IHC)

### Product Details

Immunogen:	The immunogen is a synthetic peptide directed towards the C terminal region of human TPM2
Sequence:	AETRAEFAER SVAKLEKTID DLEDEVYAQK MKYKAISEEL DNALNDITSL
Predicted Reactivity:	Cow: 100%, Dog: 100%, Guinea Pig: 79%, Horse: 85%, Human: 100%, Mouse: 100%, Pig: 85%, Rabbit: 100%, Rat: 100%, Sheep: 85%, Zebrafish: 86%
Characteristics:	This is a rabbit polyclonal antibody against TPM2. It was validated on Western Blot and immunohistochemistry.
Purification:	Protein A purified

### Target Details

Target:	TPM2
---------	------

## Target Details

---

Alternative Name: TPM2 ([TPM2 Products](#))

---

Background: TPM2 is beta-tropomyosin, an isoform of tropomyosin that is mainly expressed in slow, type 1 muscle fibers. The TPM2 gene encodes beta-tropomyosin, an isoform of tropomyosin that is mainly expressed in slow, type 1 muscle fibers (Tajsharghi et al., 2007 [PubMed 17846275]). See also TPM1 (MIM 191010), TPM3 (MIM 191030), and TPM4 (MIM 600317). [supplied by OMIM]. Publication Note: This RefSeq record includes a subset of the publications that are available for this gene. Please see the Entrez Gene record to access additional publications.

Alias Symbols: AMCD1, DA1, TMSB, DA2B, NEM4

Protein Interaction Partner: UBC, RPA3, RPA2, RPA1, HECTD1, SKIL, STAM, TPM4, TPM3, TPM1, SULT1A1, NONO, STMN1, DYNC1H1, DDX3X, DDB1, SRXN1, CPSF7, CORO1B, DSTN, SF3B2, AHCYL1, DDX46, TAF15, LRRK2, AKT1, SP1, ACTA1, S100A4, TPM2, PDLIM7, PIK3CG, RRAD, S100A2, JUN, ADRBK1, ACTB,

Protein Size: 284

---

Molecular Weight: 33 kDa

---

Gene ID: 7169

---

NCBI Accession: [NM\\_003289](#), [NP\\_003280](#)

---

UniProt: [P07951](#)

---

## Application Details

---

Application Notes: Optimal working dilutions should be determined experimentally by the investigator.

---

Comment: Antigen size: 284 AA

---

Restrictions: For Research Use only

---

## Handling

---

Format: Liquid

---

Concentration: Lot specific

---

Buffer: Liquid. Purified antibody supplied in 1x PBS buffer with 0.09 % (w/v) sodium azide and 2 % sucrose.

---

Preservative: Sodium azide

---

Precaution of Use: This product contains Sodium azide: a POISONOUS AND HAZARDOUS SUBSTANCE which should be handled by trained staff only.

---

## Handling

Handling Advice: Avoid repeated freeze-thaw cycles.

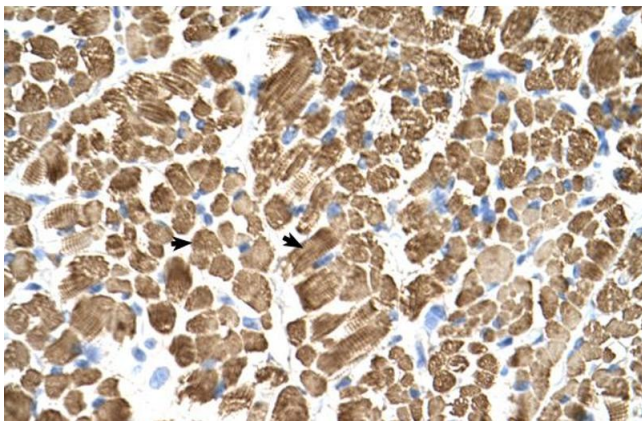
Storage: -20 °C

Storage Comment: For short term use, store at 2-8°C up to 1 week. For long term storage, store at -20°C in small aliquots to prevent freeze-thaw cycles.

## Publications

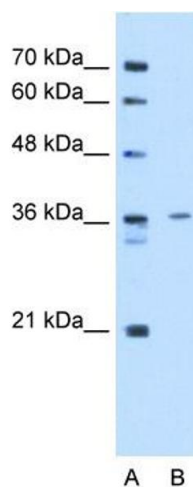
Product cited in: Ewing, Chu, Elisma, Li, Taylor, Climie, McBroom-Cerajewski, Robinson, OConnor, Li, Taylor, Dharsee, Ho, Heilbut, Moore, Zhang, Ornatsky, Bukhman, Ethier, Sheng, Vasilescu, Abu-Farha, Lambert, Duewel et al.: "Large-scale mapping of human protein-protein interactions by mass spectrometry. ..." in: **Molecular systems biology**, Vol. 3, pp. 89, (2007) ([PubMed](#)).

## Images



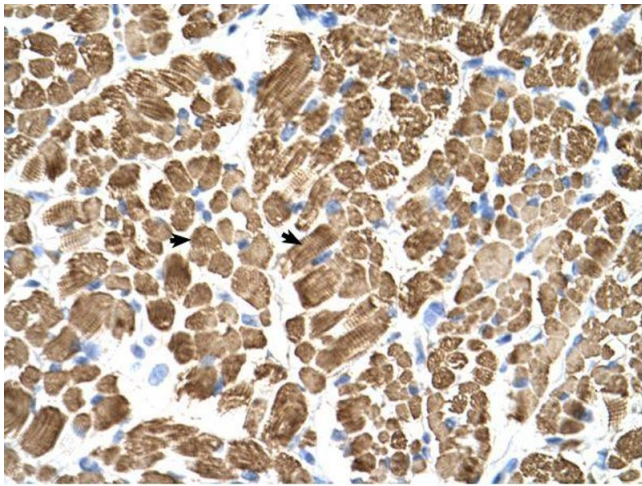
### Immunohistochemistry

**Image 1.** Human Muscle



### Western Blotting

**Image 2.** WB Suggested Antibody Titration: 2.5 ug/ml  
Positive Control: HepG2



### Immunohistochemistry

Image 3.