

Datasheet for ABIN2783291  
**anti-TCAP antibody (Middle Region)**



[Go to Product page](#)

1 Image

## Overview

Quantity:	100 µL
Target:	TCAP
Binding Specificity:	Middle Region
Reactivity:	Human, Mouse, Rat, Cow, Dog, Guinea Pig, Horse, Goat, Rabbit
Host:	Rabbit
Clonality:	Polyclonal
Conjugate:	This TCAP antibody is un-conjugated
Application:	Western Blotting (WB)

## Product Details

Immunogen:	The immunogen is a synthetic peptide directed towards the middle region of human TCAP
Sequence:	IQLQELLALE TALGGQCVDR QEVAEITKQL PPVVPVSKPG ALRRSLSRSM
Predicted Reactivity:	Cow: 100%, Dog: 100%, Goat: 100%, Guinea Pig: 100%, Horse: 100%, Human: 100%, Mouse: 100%, Rabbit: 100%, Rat: 100%
Characteristics:	This is a rabbit polyclonal antibody against TCAP. It was validated on Western Blot using a cell lysate as a positive control.
Purification:	Protein A purified

## Target Details

Target:	TCAP
---------	------

## Target Details

---

Alternative Name: [TCAP \(TCAP Products\)](#)

---

Background: Sarcomere assembly is regulated by the muscle protein titin. Titin is a giant elastic protein with kinase activity that extends half the length of a sarcomere. It serves as a scaffold to which myofibrils and other muscle related proteins are attached. TCAP is a protein found in striated and cardiac muscle that binds to the titin Z1-Z2 domains and is a substrate of titin kinase, interactions thought to be critical to sarcomere assembly. Mutations in TCAP gene are associated with limb-girdle muscular dystrophy type 2G. Sarcomere assembly is regulated by the muscle protein titin. Titin is a giant elastic protein with kinase activity that extends half the length of a sarcomere. It serves as a scaffold to which myofibrils and other muscle related proteins are attached. This gene encodes a protein found in striated and cardiac muscle that binds to the titin Z1-Z2 domains and is a substrate of titin kinase, interactions thought to be critical to sarcomere assembly. Mutations in this gene are associated with limb-girdle muscular dystrophy type 2G. Publication Note: This RefSeq record includes a subset of the publications that are available for this gene. Please see the Entrez Gene record to access additional publications.

Alias Symbols: CMD1N, LGMD2G, T-cap, TELE, telethonin

Protein Interaction Partner: TRIM63, TRIM55, RELA, FYN, FAS, ATXN1, MDM2, TTN, PDPK1, MYOZ3, ANKRD2, MYOZ1, MSTN, MYOZ2,

Protein Size: 167

---

Molecular Weight: 19 kDa

---

Gene ID: 8557

---

NCBI Accession: [NM\\_003673](#), [NP\\_003664](#)

---

UniProt: [O15273](#)

---

## Application Details

---

Application Notes: Optimal working dilutions should be determined experimentally by the investigator.

---

Comment: Antigen size: 167 AA

---

Restrictions: For Research Use only

---

## Handling

---

Format: Liquid

---

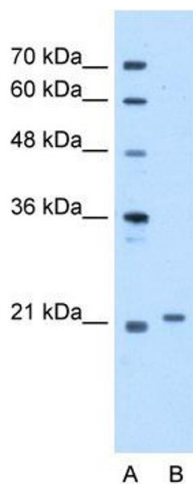
Concentration: Lot specific

---

## Handling

Buffer:	Liquid. Purified antibody supplied in 1x PBS buffer with 0.09 % (w/v) sodium azide and 2 % sucrose.
Preservative:	Sodium azide
Precaution of Use:	This product contains Sodium azide: a POISONOUS AND HAZARDOUS SUBSTANCE which should be handled by trained staff only.
Handling Advice:	Avoid repeated freeze-thaw cycles.
Storage:	-20 °C
Storage Comment:	For short term use, store at 2-8°C up to 1 week. For long term storage, store at -20°C in small aliquots to prevent freeze-thaw cycles.

## Images



### Western Blotting

**Image 1.** WB Suggested Anti-TCAP Antibody Titration:  
5.0ug/ml Positive Control: HepG2 cell lysate