

Datasheet for ABIN2783293  
**anti-PEA15 antibody (Middle Region)**

## 3 Images

[Go to Product page](#)

## Overview

Quantity:	100 µL
Target:	PEA15
Binding Specificity:	Middle Region
Reactivity:	Human, Mouse, Rat, Cow, Dog, Guinea Pig, Horse, Rabbit, Zebrafish (Danio rerio)
Host:	Rabbit
Clonality:	Polyclonal
Conjugate:	This PEA15 antibody is un-conjugated
Application:	Western Blotting (WB), Immunohistochemistry (IHC)

## Product Details

Immunogen:	The immunogen is a synthetic peptide directed towards the middle region of human PEA15
Sequence:	DLLTMVVDYR TRVLKISEED ELDTKLTRIP SAKKYKDIIR QPSEEEIIKL
Predicted Reactivity:	Cow: 100%, Dog: 100%, Guinea Pig: 100%, Horse: 100%, Human: 100%, Mouse: 100%, Rabbit: 100%, Rat: 100%, Zebrafish: 93%
Characteristics:	This is a rabbit polyclonal antibody against PEA15. It was validated on Western Blot using a cell lysate as a positive control.
Purification:	Affinity Purified

## Target Details

Target:	PEA15
---------	-------

## Target Details

Alternative Name:	PEA15 ( <a href="#">PEA15 Products</a> )
Background:	<p>PEA15 is a death effector domain (DED)-containing protein predominantly expressed in the central nervous system, particularly in astrocytes. PEA15 is a death effector domain (DED)-containing protein predominantly expressed in the central nervous system, particularly in astrocytes. [supplied by OMIM]. Publication Note: This RefSeq record includes a subset of the publications that are available for this gene. Please see the Entrez Gene record to access additional publications.</p> <p>Alias Symbols: HMAT1, HUMMAT1H, MAT1, MAT1H, PEA-15, PED</p> <p>Protein Interaction Partner: UBC, LGR4, IQCB1, TERF2IP, MAPK3, MAPK1, PDPK1, LUC7L2, AK9, PANK4, HTRA2, ABCD4, FADD, PLD2, PLD1, CAMK2G, CASP8, L1CAM, RPS6KA3, PRKCA, AKT1, Protein Size: 130</p>
Molecular Weight:	15 kDa
Gene ID:	8682
NCBI Accession:	<a href="#">NM_003768</a> , <a href="#">NP_003759</a>
UniProt:	<a href="#">Q15121</a>

## Application Details

Application Notes:	Optimal working dilutions should be determined experimentally by the investigator.
Comment:	Antigen size: 130 AA
Restrictions:	For Research Use only

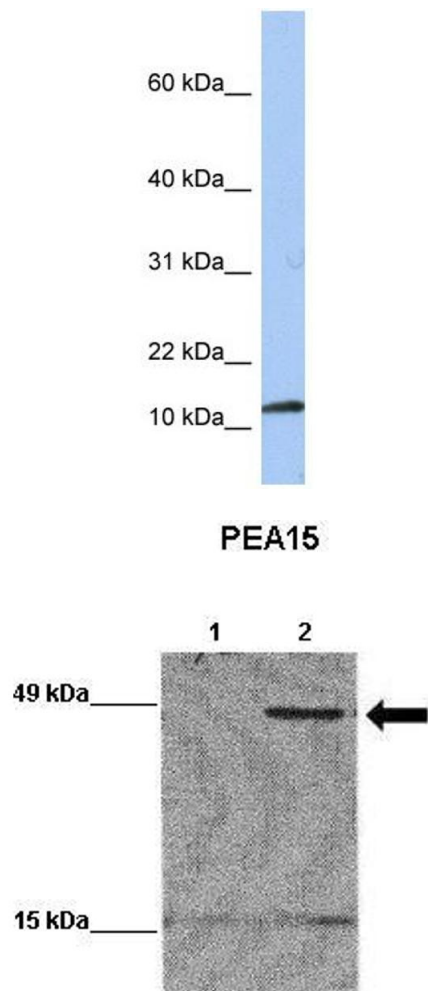
## Handling

Format:	Liquid
Concentration:	Lot specific
Buffer:	Liquid. Purified antibody supplied in 1x PBS buffer with 0.09 % (w/v) sodium azide and 2 % sucrose.
Preservative:	Sodium azide
Precaution of Use:	This product contains Sodium azide: a POISONOUS AND HAZARDOUS SUBSTANCE which should be handled by trained staff only.
Handling Advice:	Avoid repeated freeze-thaw cycles.

Handling

Storage:	-20 °C
Storage Comment:	For short term use, store at 2-8°C up to 1 week. For long term storage, store at -20°C in small aliquots to prevent freeze-thaw cycles.

Images



Western Blotting

**Image 1.** WB Suggested Anti-PEA15 Antibody Titration: 0.2-1 ug/ml Positive Control: 721\_B cell lysate

Western Blotting

**Image 2.** WB Suggested Anti-PEA15 Antibody Positive Control: Lane 1: 20ug EGFP-transfected MCF7 lysate Lane 2: 20ug EGFP-PEA15 transfected MCF7 lysate Primary Antibody Dilution : 1:1000 Secondary Antibody : Goat anti-rabbit-HRP Secondary Antibody Dilution : 1:5000 Submitted by: Yann Wallez (Sanford-Burnham Medical Research Institute)

Immunohistochemistry

**Image 3.** Rabbit Anti-PEA15 Antibody Formalin Fixed Paraffin Embedded Tissue: Human heart Tissue Observed Staining: Cytoplasmic Primary Antibody Concentration: 1:100 Other Working Concentrations: N/A Secondary Antibody: Donkey anti-Rabbit-Cy3 Secondary Antibody Concentration: 1:200 Magnification: 20X Exposure Time: 0.5 - 2.0 sec