

Datasheet for ABIN2783294
anti-SELENBP1 antibody (N-Term)[Go to Product page](#)

4 Images

Overview

Quantity:	100 µL
Target:	SELENBP1
Binding Specificity:	N-Term
Reactivity:	Human, Mouse, Rat, Cow, Dog, Horse, Guinea Pig, Rabbit
Host:	Rabbit
Clonality:	Polyclonal
Conjugate:	This SELENBP1 antibody is un-conjugated
Application:	Western Blotting (WB), Immunohistochemistry (IHC)

Product Details

Immunogen:	The immunogen is a synthetic peptide directed towards the N terminal region of human SELENBP1
Sequence:	MATKCGNCGP GYSTPLEAMK GPREEIVYLP CIYRNTGTEA PDYLATVDVD
Predicted Reactivity:	Cow: 100%, Dog: 86%, Guinea Pig: 93%, Horse: 100%, Human: 100%, Mouse: 100%, Rabbit: 93%, Rat: 100%
Characteristics:	This is a rabbit polyclonal antibody against SELENBP1. It was validated on Western Blot using a cell lysate as a positive control.
Purification:	Affinity Purified

Target Details

Target:	SELENBP1
---------	----------

Target Details

Alternative Name:	SELENBP1 (SELENBP1 Products)
Background:	<p>SELENBP1 belongs to the selenium-binding protein family. Selenium is an essential nutrient that exhibits potent anticarcinogenic properties, and deficiency of selenium may cause certain neurologic diseases. It has been proposed that the effects of selenium in preventing cancer and neurologic diseases may be mediated by selenium-binding proteins. This gene product belongs to the selenium-binding protein family. Selenium is an essential nutrient that exhibits potent anticarcinogenic properties, and deficiency of selenium may cause certain neurologic diseases. It has been proposed that the effects of selenium in preventing cancer and neurologic diseases may be mediated by selenium-binding proteins. The exact function of this gene is not known.</p> <p>Alias Symbols: FLJ13813, LPSB, SP56, hSBP, hSP56, SBP56</p> <p>Protein Interaction Partner: EED, GPX1, MLH1, BARD1, VMA21, COA7, SCAF4, TMED9, DPP7, WDHD1, SUCLG1, UQCRFS1P1, UQCRFS1, SUMO2, S100A4, PLAUR, MED31, TRA2A, GORASP2, USP15, LRIF1, POLDIP2, TRIP13, RPA1, USP33, AR,</p> <p>Protein Size: 472</p>
Molecular Weight:	52 kDa
Gene ID:	8991
NCBI Accession:	NM_003944 , NP_003935
UniProt:	Q13228
Pathways:	Brown Fat Cell Differentiation

Application Details

Application Notes:	Optimal working dilutions should be determined experimentally by the investigator.
Comment:	Antigen size: 472 AA
Restrictions:	For Research Use only

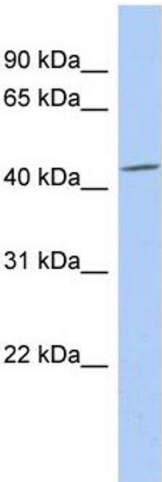
Handling

Format:	Liquid
Concentration:	Lot specific
Buffer:	Liquid. Purified antibody supplied in 1x PBS buffer with 0.09 % (w/v) sodium azide and 2 % sucrose.
Preservative:	Sodium azide

Handling

Precaution of Use:	This product contains Sodium azide: a POISONOUS AND HAZARDOUS SUBSTANCE which should be handled by trained staff only.
Handling Advice:	Avoid repeated freeze-thaw cycles.
Storage:	-20 °C
Storage Comment:	For short term use, store at 2-8°C up to 1 week. For long term storage, store at -20°C in small aliquots to prevent freeze-thaw cycles.

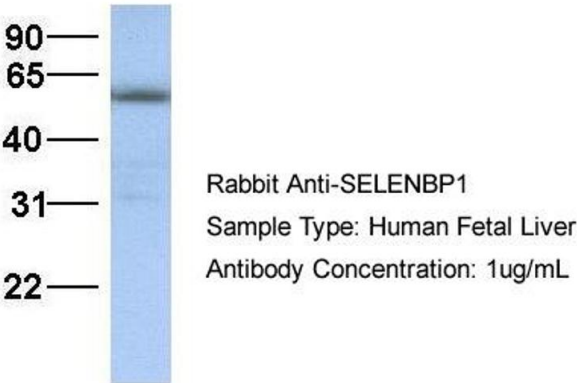
Images



Western Blotting

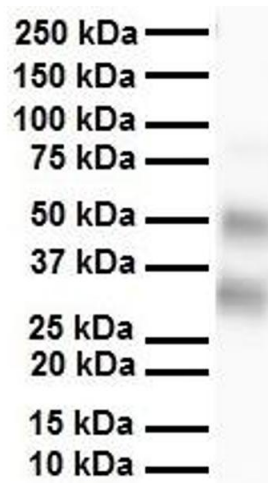
Image 1. WB Suggested Anti-SELENBP1 Antibody Titration: 0.2-1 ug/ml ELISA Titer: 1:1562500 Positive Control: SH-SY5Y cell lysate

SELENBP1



Western Blotting

Image 2. WB Suggested Anti-SELENBP1 antibody Titration: 1 ug/mL Sample Type: Human liver



Western Blotting

Image 3. WB Suggested Anti-SELENBP1 antibody Titration:
1 ug/mL Sample Type: Human heart

Please check the [product details page](#) for more images. Overall 4 images are available for ABIN2783294.