

Datasheet for ABIN2783295  
**anti-SELENBP1 antibody (C-Term)**

## 6 Images

[Go to Product page](#)

## Overview

Quantity:	100 µL
Target:	SELENBP1
Binding Specificity:	C-Term
Reactivity:	Human, Mouse, Rat, Cow, Dog, Horse, Guinea Pig, Rabbit, Zebrafish (Danio rerio), Goat
Host:	Rabbit
Clonality:	Polyclonal
Conjugate:	This SELENBP1 antibody is un-conjugated
Application:	Western Blotting (WB), Immunohistochemistry (IHC)

## Product Details

Immunogen:	The immunogen is a synthetic peptide directed towards the C terminal region of human SELENBP1
Sequence:	KQFYPLIRE GSVMLQVDVD TVKGGKLNP NFLVDFGKEP LGPALAHELRL
Predicted Reactivity:	Cow: 100%, Dog: 100%, Goat: 79%, Guinea Pig: 100%, Horse: 100%, Human: 100%, Mouse: 100%, Rabbit: 93%, Rat: 100%, Zebrafish: 86%
Characteristics:	This is a rabbit polyclonal antibody against SELENBP1. It was validated on Western Blot using a cell lysate as a positive control.
Purification:	Affinity Purified

## Target Details

Target:	SELENBP1
---------	----------

## Target Details

Alternative Name:	SELENBP1 ( <a href="#">SELENBP1 Products</a> )
Background:	<p>SELENBP1 belongs to the selenium-binding protein family. Selenium is an essential nutrient that exhibits potent anticarcinogenic properties, and deficiency of selenium may cause certain neurologic diseases. It has been proposed that the effects of selenium in preventing cancer and neurologic diseases may be mediated by selenium-binding proteins.</p> <p>Alias Symbols: FLJ13813, LPSB, SP56, hSBP, hSP56, SBP56</p> <p>Protein Interaction Partner: EED, GPX1, MLH1, BARD1, VMA21, COA7, SCAF4, TMED9, DPP7, WDHD1, SUCLG1, UQCRFS1P1, UQCRFS1, SUMO2, S100A4, PLAUR, MED31, TRA2A, GORASP2, USP15, LRIF1, POLDIP2, TRIP13, RPA1, USP33, AR,</p> <p>Protein Size: 408</p>
Molecular Weight:	44 kDa
Gene ID:	8991
UniProt:	<a href="#">Q13228</a> , <a href="#">Q49AQ8</a>
Pathways:	<a href="#">Brown Fat Cell Differentiation</a>

## Application Details

Application Notes:	Optimal working dilutions should be determined experimentally by the investigator.
Comment:	Antigen size: 408 AA
Restrictions:	For Research Use only

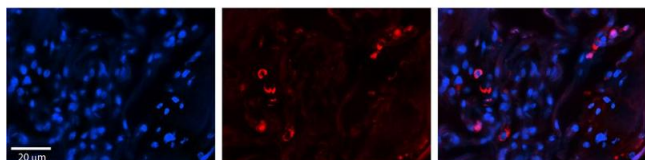
## Handling

Format:	Liquid
Concentration:	Lot specific
Buffer:	Liquid. Purified antibody supplied in 1x PBS buffer with 0.09 % (w/v) sodium azide and 2 % sucrose.
Preservative:	Sodium azide
Precaution of Use:	This product contains Sodium azide: a POISONOUS AND HAZARDOUS SUBSTANCE which should be handled by trained staff only.
Handling Advice:	Avoid repeated freeze-thaw cycles.
Storage:	-20 °C

## Handling

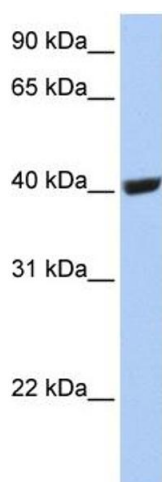
Storage Comment: For short term use, store at 2-8°C up to 1 week. For long term storage, store at -20°C in small aliquots to prevent freeze-thaw cycles.

## Images



### Immunohistochemistry

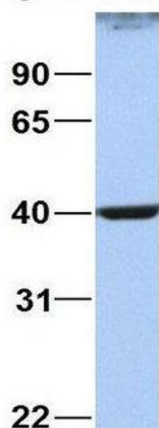
**Image 1.** Rabbit Anti-SELENBP1 Antibody Formalin Fixed Paraffin Embedded Tissue: Human Lung Tissue Observed Staining: Cytoplasmic, membrane and nuclear in alveolar type I & II cells Primary Antibody Concentration: 1:100 Other Working Concentrations: 1/600 Secondary Antibody: Donkey anti-Rabbit-Cy3 Secondary Antibody Concentration: 1:200 Magnification: 20X Exposure Time: 0.5 - 2.0 sec



### Western Blotting

**Image 2.** WB Suggested Anti-SELENBP1 Antibody Titration: 0.2-1 ug/ml Positive Control: 721\_B cell lysate

### SELENBP1



### Western Blotting

**Image 3.** Host: Rabbit Target Name: NOP56 Sample Type: MCF7 Antibody Dilution: 1.0ug/ml SELENBP1 is supported by BioGPS gene expression data to be expressed in MCF7

Please check the [product details page](#) for more images. Overall 6 images are available for ABIN2783295.