

Datasheet for ABIN2783298  
**anti-LIPF antibody (N-Term)**[Go to Product page](#)

## 1 Image

## Overview

Quantity:	100 µL
Target:	LIPF
Binding Specificity:	N-Term
Reactivity:	Human, Mouse, Rat, Horse, Dog, Guinea Pig, Rabbit
Host:	Rabbit
Clonality:	Polyclonal
Conjugate:	This LIPF antibody is un-conjugated
Application:	Western Blotting (WB)

## Product Details

Immunogen:	The immunogen is a synthetic peptide directed towards the N terminal region of human LIPF
Sequence:	ISQMITYWGY PNEEYEVVTE DGYILEVNRI PYGKKNSGNT GQRPVVFLQH
Predicted Reactivity:	Dog: 77%, Guinea Pig: 91%, Horse: 86%, Human: 100%, Mouse: 85%, Rabbit: 93%, Rat: 86%
Characteristics:	This is a rabbit polyclonal antibody against LIPF. It was validated on Western Blot using a cell lysate as a positive control.
Purification:	Affinity Purified

## Target Details

Target:	LIPF
Alternative Name:	LIPF ( <a href="#">LIPF Products</a> )

## Target Details

Background:	<p>The specific function of this protein remains unknown. This gene encodes gastric lipase, an enzyme involved in the digestion of dietary triglycerides in the gastrointestinal tract, and responsible for 30 % of fat digestion processes occurring in human. It is secreted by gastric chief cells in the fundic mucosa of the stomach, and it hydrolyzes the ester bonds of triglycerides under acidic pH conditions. The gene is a member of a conserved gene family of lipases that play distinct roles in neutral lipid metabolism. Publication Note: This RefSeq record includes a subset of the publications that are available for this gene. Please see the Entrez Gene record to access additional publications.</p> <p>Alias Symbols: GL, HGL, HLAL, MGC138477, MGC142271</p> <p>Protein Interaction Partner: ATP4A, PSEN2, CLPS,</p> <p>Protein Size: 398</p>
Molecular Weight:	43 kDa
Gene ID:	8513
NCBI Accession:	<a href="#">NM_004190</a> , <a href="#">NP_004181</a>
UniProt:	<a href="#">P07098</a>

## Application Details

Application Notes:	Optimal working dilutions should be determined experimentally by the investigator.
Comment:	Antigen size: 398 AA
Restrictions:	For Research Use only

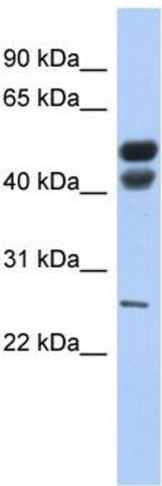
## Handling

Format:	Liquid
Concentration:	Lot specific
Buffer:	Liquid. Purified antibody supplied in 1x PBS buffer with 0.09 % (w/v) sodium azide and 2 % sucrose.
Preservative:	Sodium azide
Precaution of Use:	This product contains Sodium azide: a POISONOUS AND HAZARDOUS SUBSTANCE which should be handled by trained staff only.
Handling Advice:	Avoid repeated freeze-thaw cycles.
Storage:	-20 °C

Handling

Storage Comment: For short term use, store at 2-8°C up to 1 week. For long term storage, store at -20°C in small aliquots to prevent freeze-thaw cycles.

Images



Western Blotting

**Image 1.** WB Suggested Anti-LIPF Antibody Titration: 0.2-1 ug/ml ELISA Titer: 1:312500 Positive Control: Human Stomach