

Datasheet for ABIN2783300
anti-Sep 15 antibody (Middle Region)[Go to Product page](#)

1 Image

Overview

Quantity:	100 µL
Target:	Sep 15 (SEP15)
Binding Specificity:	Middle Region
Reactivity:	Human, Mouse, Rat, Pig, Zebrafish (Danio rerio), Cow
Host:	Rabbit
Clonality:	Polyclonal
Conjugate:	This Sep 15 antibody is un-conjugated
Application:	Western Blotting (WB)

Product Details

Immunogen:	The immunogen is a synthetic peptide directed towards the middle region of human SEP15
Sequence:	SDKPKLFRGL QIKYVRGSDP VLKLLDDNGN IAEELSILKW NTDSVEEFLS
Predicted Reactivity:	Cow: 93%, Human: 100%, Mouse: 100%, Pig: 100%, Rat: 100%, Zebrafish: 100%
Characteristics:	This is a rabbit polyclonal antibody against SEP15. It was validated on Western Blot using a cell lysate as a positive control.
Purification:	Affinity Purified

Target Details

Target:	Sep 15 (SEP15)
Alternative Name:	SEP15 (SEP15 Products)

Target Details

Background:	<p>SEP15 is a selenoprotein, which contains a selenocysteine (Sec) residue at its active site. Studies in mouse suggest that this selenoprotein may have redox function and may be involved in the quality control of protein folding. The gene that encodes the protein is localized on chromosome 1p31, a genetic locus commonly mutated or deleted in human cancers. This gene encodes a selenoprotein, which contains a selenocysteine (Sec) residue at its active site. The selenocysteine is encoded by the UGA codon that normally signals translation termination. The 3' UTR of selenoprotein genes have a common stem-loop structure, the sec insertion sequence (SECIS), that is necessary for the recognition of UGA as a Sec codon rather than as a stop signal. Studies in mouse suggest that this selenoprotein may have redox function and may be involved in the quality control of protein folding. This gene is localized on chromosome 1p31, a genetic locus commonly mutated or deleted in human cancers. Two alternatively spliced transcript variants encoding distinct isoforms have been found for this gene.</p> <p>Alias Symbols: -</p> <p>Protein Interaction Partner: METTL23, UBC, DCUN1D1, CUL3, BAMBI, XRCC6, UGGT2, UGGT1,</p> <p>Protein Size: 165</p>
-------------	--

Molecular Weight:	15 kDa
-------------------	--------

Gene ID:	9403
----------	------

NCBI Accession:	NM_004261 , NP_004252
-----------------	---

UniProt:	O60613
----------	------------------------

Application Details

Application Notes:	Optimal working dilutions should be determined experimentally by the investigator.
--------------------	--

Comment:	Antigen size: 165 AA
----------	----------------------

Restrictions:	For Research Use only
---------------	-----------------------

Handling

Format:	Liquid
---------	--------

Concentration:	Lot specific
----------------	--------------

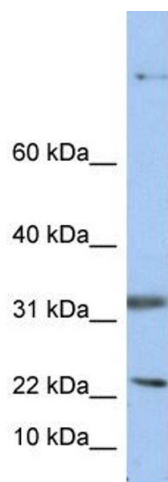
Buffer:	Liquid. Purified antibody supplied in 1x PBS buffer with 0.09 % (w/v) sodium azide and 2 % sucrose.
---------	---

Preservative:	Sodium azide
---------------	--------------

Handling

Precaution of Use:	This product contains Sodium azide: a POISONOUS AND HAZARDOUS SUBSTANCE which should be handled by trained staff only.
Handling Advice:	Avoid repeated freeze-thaw cycles.
Storage:	-20 °C
Storage Comment:	For short term use, store at 2-8°C up to 1 week. For long term storage, store at -20°C in small aliquots to prevent freeze-thaw cycles.

Images



Western Blotting

Image 1. WB Suggested Anti-SEAntibody Titration: 0.2-1 ug/ml Positive Control: HepG2 cell lysate