

Datasheet for ABIN2783307  
**anti-TPD52 antibody (C-Term)**[Go to Product page](#)

## 3 Images

## Overview

Quantity:	100 µL
Target:	TPD52
Binding Specificity:	C-Term
Reactivity:	Human, Mouse, Rat, Dog, Cow, Horse, Rabbit, Guinea Pig, Zebrafish (Danio rerio), Pig
Host:	Rabbit
Clonality:	Polyclonal
Conjugate:	This TPD52 antibody is un-conjugated
Application:	Western Blotting (WB), Immunohistochemistry (IHC)

## Product Details

Immunogen:	The immunogen is a synthetic peptide directed towards the C terminal region of human TPD52
Sequence:	RELAKVEEEI QTLSQVLA AK EKHLAEIKRK LGINSLQELK QNIAKGWQDV
Predicted Reactivity:	Cow: 100%, Dog: 100%, Guinea Pig: 93%, Horse: 100%, Human: 100%, Mouse: 100%, Pig: 100%, Rabbit: 100%, Rat: 100%, Zebrafish: 93%
Characteristics:	This is a rabbit polyclonal antibody against TPD52. It was validated on Western Blot.
Purification:	Affinity Purified

## Target Details

Target:	TPD52
Alternative Name:	TPD52 ( <a href="#">TPD52 Products</a> )

## Target Details

Background: It belongs to the TPD52 family. Its exact function remains unknown.

Alias Symbols: D52, N8L, PC-1, PrLZ, hD52

Protein Interaction Partner: PDCD4, CACYBP, PDLIM5, PDIA6, ARPC1B, TPD52L2, PRKACA, AARS, SRPK2, BAG3, SENP2, YWHAQ, SOCS2, UBC, SAR1A, SEPHS1, TPD52L3, MAL2, TPD52L1, TPD52, ANXA6,

Protein Size: 224

Molecular Weight: 24 kDa

Gene ID: 7163

NCBI Accession: [NM\\_001025252](#), [NP\\_001020423](#)

UniProt: [Q62393](#)

## Application Details

Application Notes: Optimal working dilutions should be determined experimentally by the investigator.

Comment: Antigen size: 224 AA

Restrictions: For Research Use only

## Handling

Format: Liquid

Concentration: Lot specific

Buffer: Liquid. Purified antibody supplied in 1x PBS buffer with 0.09 % (w/v) sodium azide and 2 % sucrose.

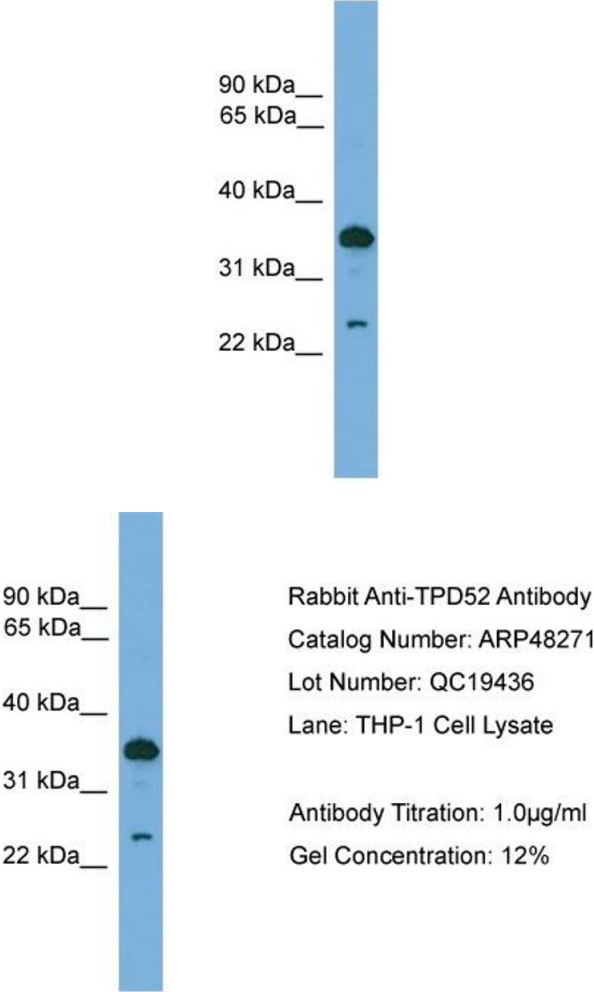
Preservative: Sodium azide

Precaution of Use: This product contains Sodium azide: a POISONOUS AND HAZARDOUS SUBSTANCE which should be handled by trained staff only.

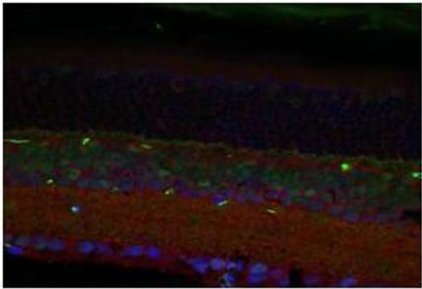
Handling Advice: Avoid repeated freeze-thaw cycles.

Storage: -20 °C

Storage Comment: For short term use, store at 2-8°C up to 1 week. For long term storage, store at -20°C in small aliquots to prevent freeze-thaw cycles.



TPD52



Red: TPD52 antibody  
Green: CtBP antibody  
Blue: DAPI

See IHC 1 Data and Customer Feedback for more information

### Western Blotting

**Image 1.** WB Suggested Anti-TPD52 Antibody Titration: 0.2-1 µg/ml ELISA Titer: 1:312500 Positive Control: THP-1 cell lysate

### Western Blotting

**Image 2.** WB Suggested Anti-TPD52 Antibody Titration: 0.2-1 µg/mL ELISA Titer: 1:12500 Positive Control: THP-1 cell lysate

### Immunohistochemistry

**Image 3.** Application: Immunofluorescence  
Species+tissue/cell type: Mouse retina  
Primary Antibody dilution: 1:200  
Secondary Antibody: Goat anti-rabbit Alexafluor 568  
Secondary Antibody Dilution: 1:000