

Datasheet for ABIN2783315  
**anti-Peroxiredoxin 2 antibody (Middle Region)**

## 3 Images

[Go to Product page](#)

## Overview

Quantity:	100 µL
Target:	Peroxiredoxin 2 (PRDX2)
Binding Specificity:	Middle Region
Reactivity:	Human, Mouse, Rat, Goat, Horse, Sheep, Cow, Guinea Pig, Rabbit, Saccharomyces cerevisiae, Zebrafish (Danio rerio), Dog
Host:	Rabbit
Clonality:	Polyclonal
Conjugate:	This Peroxiredoxin 2 antibody is un-conjugated
Application:	Western Blotting (WB), Immunohistochemistry (IHC)

## Product Details

Immunogen:	The immunogen is a synthetic peptide directed towards the middle region of human PRDX2
Sequence:	VLGVSVDSQF THLAWINTPR KEGGLGPLNI PLLADVTRRL SEDYGVVKTD
Predicted Reactivity:	Cow: 100%, Dog: 100%, Goat: 100%, Guinea Pig: 100%, Horse: 100%, Human: 100%, Mouse: 100%, Rabbit: 79%, Rat: 100%, Sheep: 100%, Yeast: 92%, Zebrafish: 79%
Characteristics:	This is a rabbit polyclonal antibody against PRDX2. It was validated on Western Blot using a cell lysate as a positive control.
Purification:	Affinity Purified

## Target Details

Target:	Peroxiredoxin 2 (PRDX2)
---------	-------------------------

## Target Details

Alternative Name:	PRDX2 ( <a href="#">PRDX2 Products</a> )
Background:	<p>PRDX2 is a member of the peroxiredoxin family of antioxidant enzymes, which reduce hydrogen peroxide and alkyl hydroperoxides. It may play an antioxidant protective role in cells, and may contribute to the antiviral activity of CD8(+) T-cells. This protein may have a proliferative effect and play a role in cancer development or progression. The crystal structure of this protein has been resolved to 2.7 angstroms. This gene encodes a member of the peroxiredoxin family of antioxidant enzymes, which reduce hydrogen peroxide and alkyl hydroperoxides. The encoded protein may play an antioxidant protective role in cells, and may contribute to the antiviral activity of CD8(+) T-cells. This protein may have a proliferative effect and play a role in cancer development or progression. The crystal structure of this protein has been resolved to 2.7 angstroms. Transcript variants encoding distinct isoforms have been identified for this gene.</p> <p>Alias Symbols: MGC4104, NKEFB, PRP, PRX2, PRXII, TDPX1, TSA, TPX1</p> <p>Protein Interaction Partner: UBC, NEDD8, IPO11, CACYBP, PPP2R5D, PRDX1, METTL1, HECW2, ESR1, RAD52, NLGN3, CD320, COPS5, PRDX4, YWHAZ, VCAM1, UTY, SAT1, ITGA4, FN1, CA4, BAD, TPM3P4, TIPRL, TMEM9, RNF32, URM1, RIF1, EXOC6, CYCS, ECSIT, PRDX5, IFIT5, MAST1, PARK7, SEC23IP, CDC37, PRDX</p> <p>Protein Size: 198</p>
Molecular Weight:	22 kDa
Gene ID:	7001
NCBI Accession:	<a href="#">NM_005809</a> , <a href="#">NP_005800</a>
UniProt:	<a href="#">P35704</a>

## Application Details

Application Notes:	Optimal working dilutions should be determined experimentally by the investigator.
Comment:	Antigen size: 198 AA
Restrictions:	For Research Use only

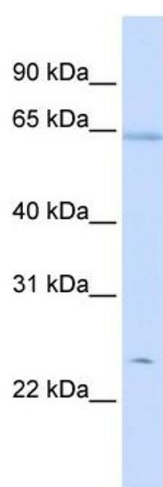
## Handling

Format:	Liquid
Concentration:	Lot specific
Buffer:	Liquid. Purified antibody supplied in 1x PBS buffer with 0.09 % (w/v) sodium azide and 2 % sucrose.

## Handling

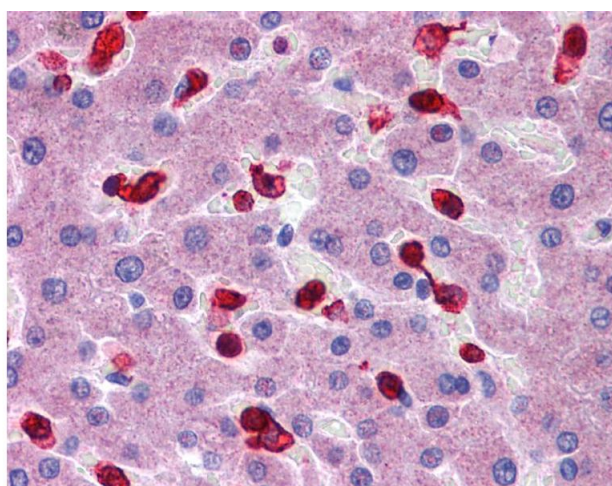
Preservative:	Sodium azide
Precaution of Use:	This product contains Sodium azide: a POISONOUS AND HAZARDOUS SUBSTANCE which should be handled by trained staff only.
Handling Advice:	Avoid repeated freeze-thaw cycles.
Storage:	-20 °C
Storage Comment:	For short term use, store at 2-8°C up to 1 week. For long term storage, store at -20°C in small aliquots to prevent freeze-thaw cycles.

## Images



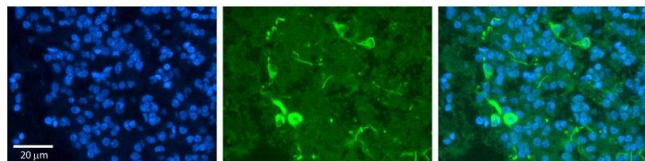
### Western Blotting

**Image 1.** WB Suggested Anti-PRDX2 Antibody Titration: 0.2-1 ug/ml ELISA Titer: 1:312500 Positive Control: HeLa cell lysate PRDX2 is supported by BioGPS gene expression data to be expressed in HeLa



### Immunohistochemistry

**Image 2.**



### Immunohistochemistry

**Image 3.** Rabbit Anti-PRDX2 Antibody Formalin Fixed Paraffin Embedded Tissue: Human Pineal Tissue Observed Staining: Cytoplasmic in cell bodies and processes of pinealocytes Primary Antibody Concentration: 1:100 Other Working Concentrations: 1/600 Secondary Antibody: Donkey anti-Rabbit-Cy3 Secondary Antibody Concentration: 1:200 Magnification: 20X Exposure Time: 0.5 - 2.0 sec