

Datasheet for ABIN2783317

anti-MDH1 antibody (Middle Region)[Go to Product page](#)**1** Image**2** Publications

Overview

Quantity:	100 µL
Target:	MDH1
Binding Specificity:	Middle Region
Reactivity:	Human, Mouse, Rat, Cow, Horse, Rabbit, Dog, Guinea Pig, Zebrafish (Danio rerio), Goat
Host:	Rabbit
Clonality:	Polyclonal
Conjugate:	This MDH1 antibody is un-conjugated
Application:	Western Blotting (WB)

Product Details

Immunogen:	The immunogen is a synthetic peptide directed towards the middle region of human MDH1
Sequence:	NFSCLTRLDH NRAKAQIALK LGVTANDVKN VIIWGNHSST QYPDVNHAKV
Predicted Reactivity:	Cow: 100%, Dog: 93%, Goat: 92%, Guinea Pig: 100%, Horse: 100%, Human: 100%, Mouse: 100%, Rabbit: 100%, Rat: 100%, Zebrafish: 92%
Characteristics:	This is a rabbit polyclonal antibody against MDH1. It was validated on Western Blot using a cell lysate as a positive control.
Purification:	Protein A purified

Target Details

Target:	MDH1
---------	------

Target Details

Alternative Name:	MDH1 (MDH1 Products)
Background:	<p>Malate dehydrogenase catalyzes the reversible oxidation of malate to oxaloacetate, utilizing the NAD/NADH cofactor system in the citric acid cycle. MDH1 is localized to the cytoplasm and may play pivotal roles in the malate-aspartate shuttle that operates in the metabolic coordination between cytosol and mitochondria. Malate dehydrogenase catalyzes the reversible oxidation of malate to oxaloacetate, utilizing the NAD/NADH cofactor system in the citric acid cycle. The protein encoded by this gene is localized to the cytoplasm and may play pivotal roles in the malate-aspartate shuttle that operates in the metabolic coordination between cytosol and mitochondria. Publication Note: This RefSeq record includes a subset of the publications that are available for this gene. Please see the Entrez Gene record to access additional publications.</p> <p>Alias Symbols: MDH-s, MDHA, MGC:1375, MOR2</p> <p>Protein Interaction Partner: ISG15, UBC, NEDD8, PARK2, HSP90AB1, HSP90AA1, FUS, IQCB1, SDHA, PGM1, LDHA, ESD, Htt, PRDX5, PRDX6, SLC9A3R1, AKT1, TERF2IP, TERF1, TP53, EGFR, MPP3, MDH1, GPD1,</p> <p>Protein Size: 334</p>
Molecular Weight:	36 kDa
Gene ID:	4190
NCBI Accession:	NM_005917 , NP_005908
UniProt:	P40925

Application Details

Application Notes:	Optimal working dilutions should be determined experimentally by the investigator.
Comment:	Antigen size: 334 AA
Restrictions:	For Research Use only

Handling

Format:	Liquid
Concentration:	Lot specific
Buffer:	Liquid. Purified antibody supplied in 1x PBS buffer with 0.09 % (w/v) sodium azide and 2 % sucrose.
Preservative:	Sodium azide

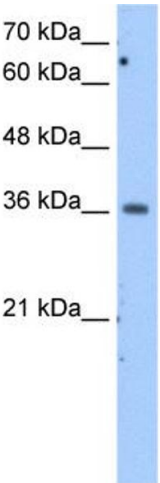
Handling

Precaution of Use:	This product contains Sodium azide: a POISONOUS AND HAZARDOUS SUBSTANCE which should be handled by trained staff only.
Handling Advice:	Avoid repeated freeze-thaw cycles.
Storage:	-20 °C
Storage Comment:	For short term use, store at 2-8°C up to 1 week. For long term storage, store at -20°C in small aliquots to prevent freeze-thaw cycles.

Publications

Product cited in:	<p>Nussbaumer, Asara, Teplytska, Murphy, Logan, Turck, Filiou: "Selective Mitochondrial Targeting Exerts Anxiolytic Effects In Vivo." in: Neuropsychopharmacology : official publication of the American College of Neuropsychopharmacology, Vol. 41, Issue 7, pp. 1751-8, (2016) (PubMed).</p> <p>Povlsen, Løfgren, Dalgas, Birkler, Johannsen, Støttrup, Bøtker: "Protection against myocardial ischemia-reperfusion injury at onset of type 2 diabetes in Zucker diabetic fatty rats is associated with altered glucose oxidation." in: PLoS ONE, Vol. 8, Issue 5, pp. e64093, (2013) (PubMed).</p>
-------------------	--

Images



Western Blotting

Image 1. WB Suggested Anti-MDH1 Antibody Titration: 2.5ug/ml Positive Control: Jurkat cell lysate